

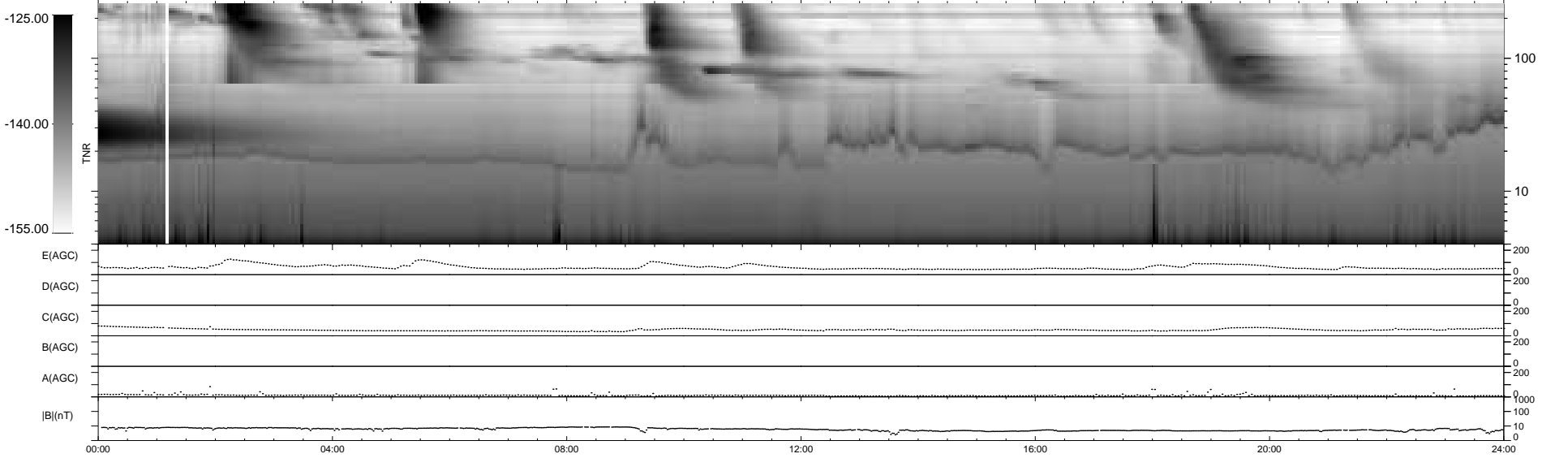
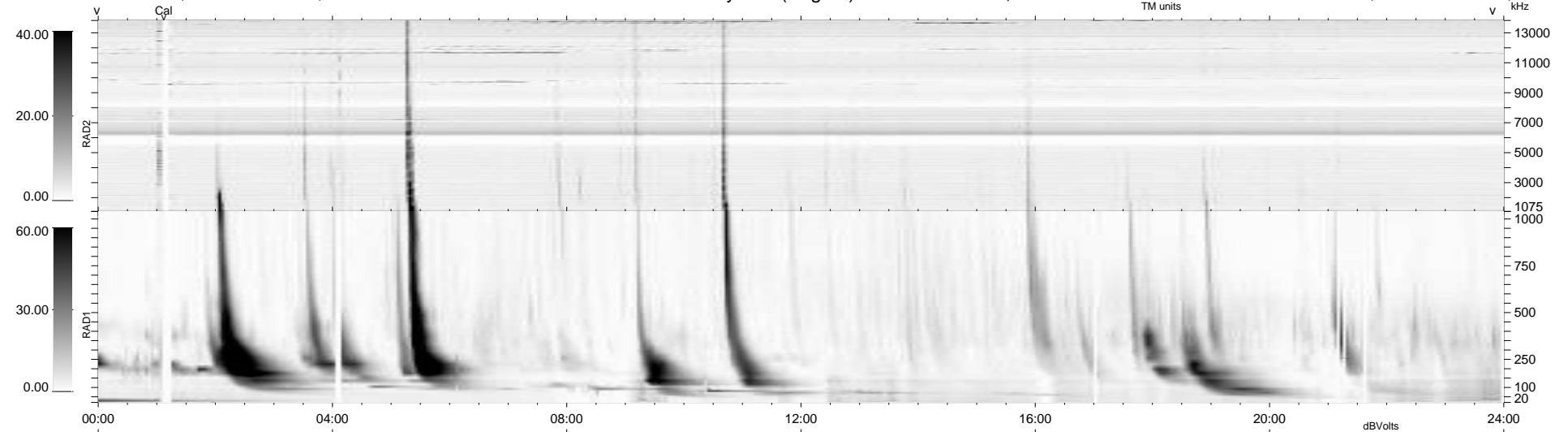
11 bad + 928 good MF/939MF projected (98%) - 0 missing MFs  
 Avg interval = 180 secs  
 Re = -262.12 (259.51, 34.15, 14.04 GSE)

windlib 2.0b

LZ version = v01

### WIND/WAVES Summary Plot (Page 1) for 21-SEP-2015, DOY = 264

DAILY 2015-09-22 07:52:07  
 Re = 262.00 (259.78, 30.87, 14.33 GSE)



RAD2  
 Antenna Ey .....  
 Mode LIN(1) .....  
 SUM/SEP SEP .....  
 Toggle OFF .....  
 RAD1  
 Antenna Ex .....  
 Mode LIS(2,4) .....  
 SUM/SEP SUM .....  
 Toggle OFF .....  
 TNR  
 Antenna ExEy .....  
 Mode A-32 .....  
 Sweep ACE .....