

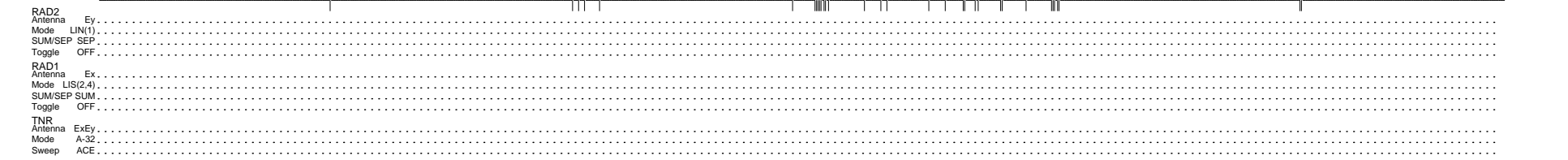
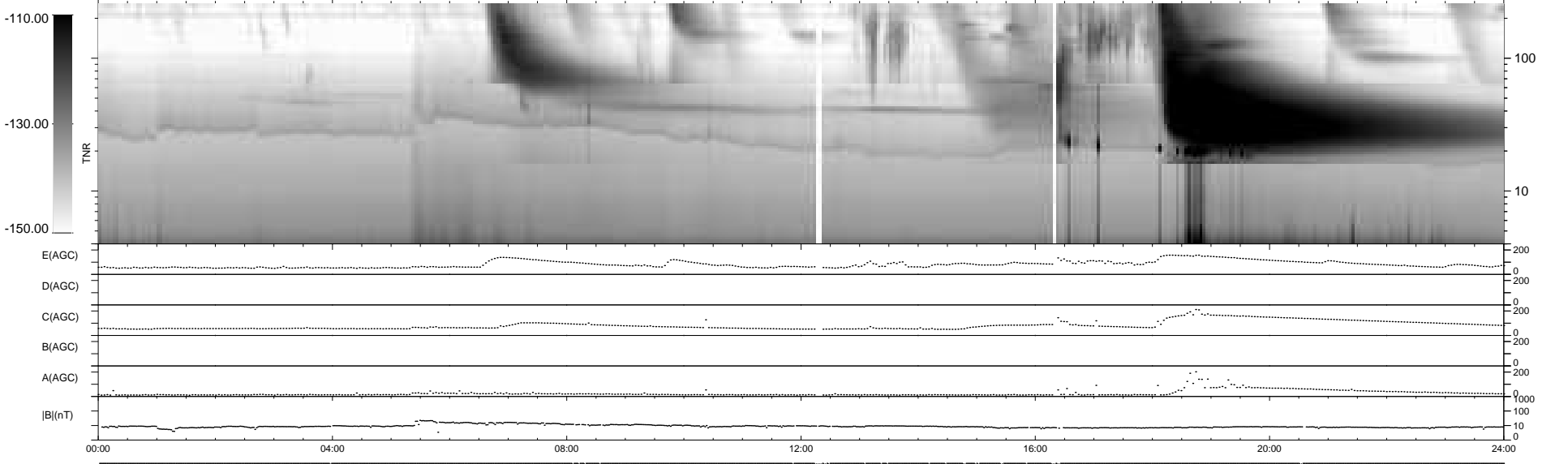
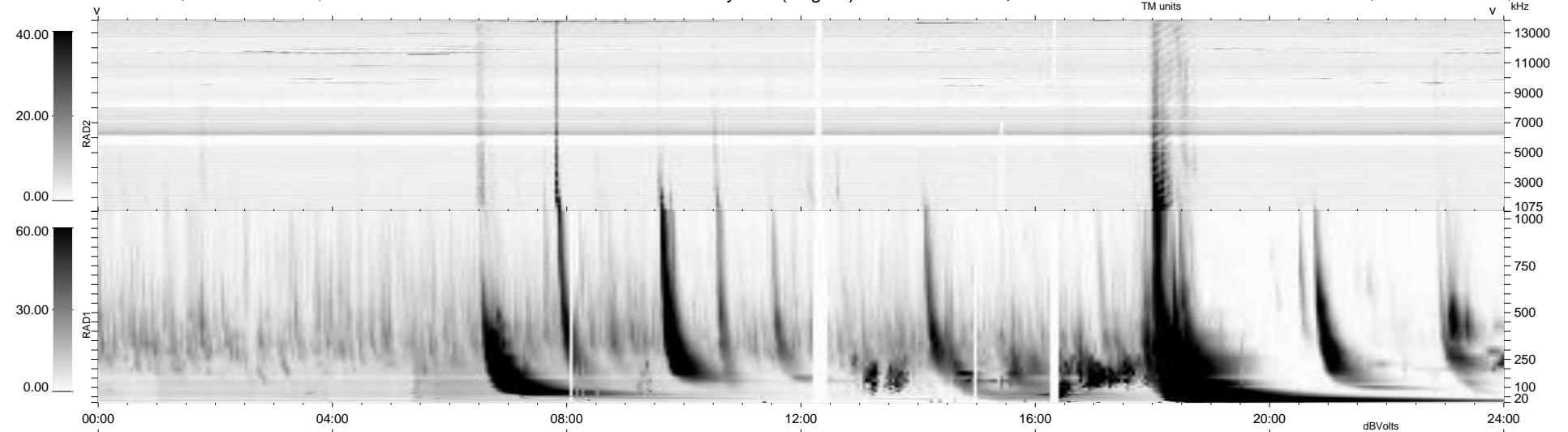
33 bad + 906 good MF/939MF projected (96%) - 0 missing MFs  
 Avg interval = 180 secs  
 Re = - 262.23 (259.19, 37.38, 13.72 GSE)

windlib 2.0b

LZ version = v01

### WIND/WAVES Summary Plot (Page 1) for 20-SEP-2015, DOY = 263

DAILY 2015-09-21 14:52:06  
 Re = 262.13 (259.51, 34.17, 14.03 GSE)



RAD2  
 Antenna Ey .....  
 Mode LIN(1) .....  
 SUM/SEP SEP .....  
 Toggle OFF .....  
 RAD1  
 Antenna Ex .....  
 Mode LIS(2,4) .....  
 SUM/SEP SUM .....  
 Toggle OFF .....  
 TNR  
 Antenna ExEy .....  
 Mode A-32 .....  
 Sweep ACE .....