

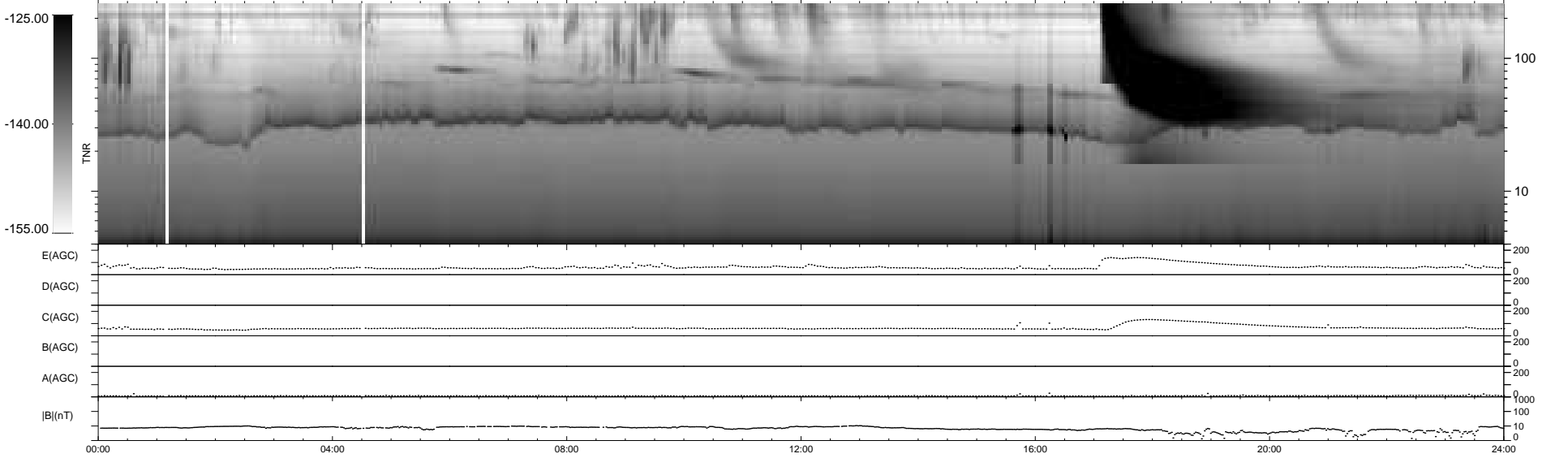
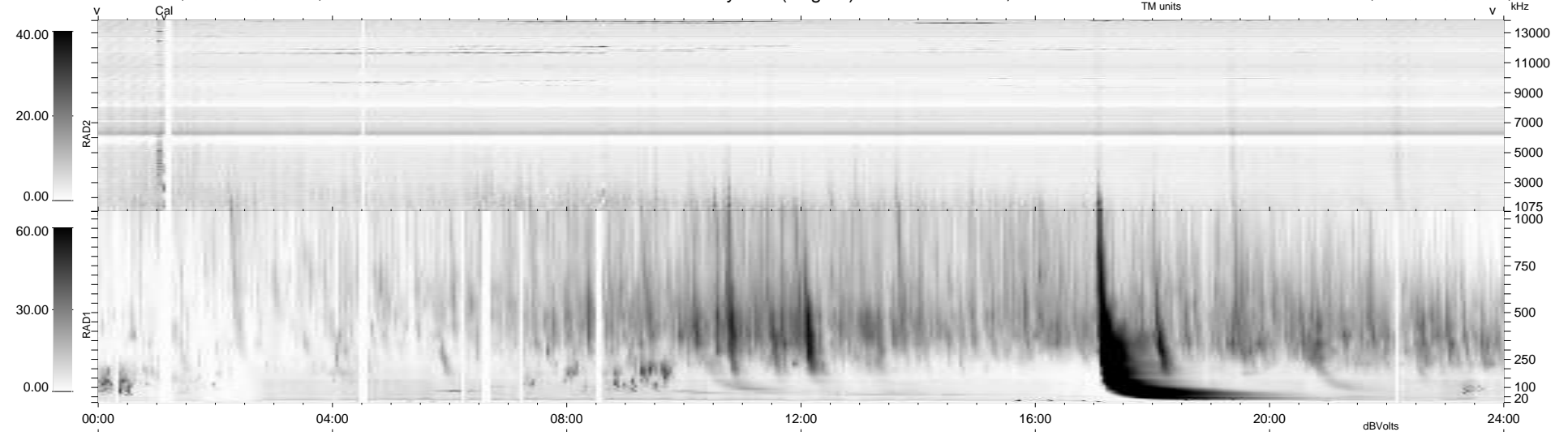
31 bad + 909 good MF/940MF projected (96%) - 0 missing MFs
 Avg interval = 180 secs
 Re = 262.31 (258.82, 40.53, 13.39 GSE)

windlib 2.0b

LZ version = v01

WIND/WAVES Summary Plot (Page 1) for 19-SEP-2015, DOY = 262

DAILY 2015-09-21 02:52:04
 Re = 262.23 (259.19, 37.40, 13.72 GSE)



RAD2 Antenna Ey
 Mode LIN(1)
 SUM/SEP SEP
 Toggle OFF
 RAD1 Antenna Ex
 Mode LIS(2,4)
 SUM/SEP SUM
 Toggle OFF
 TNR Antenna ExEy
 Mode A-32
 Sweep ACE