

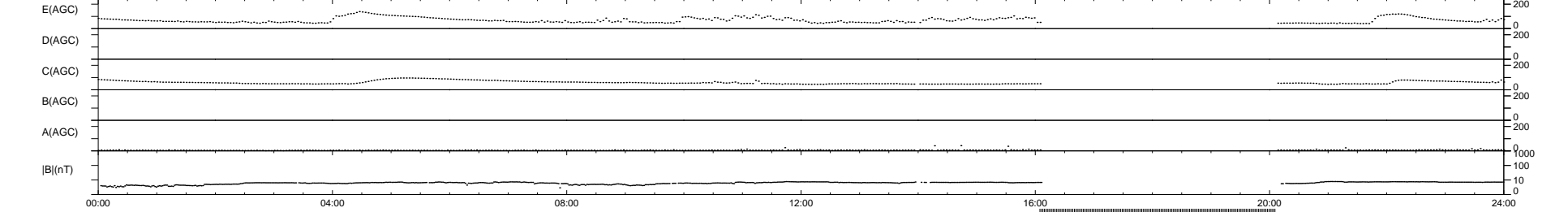
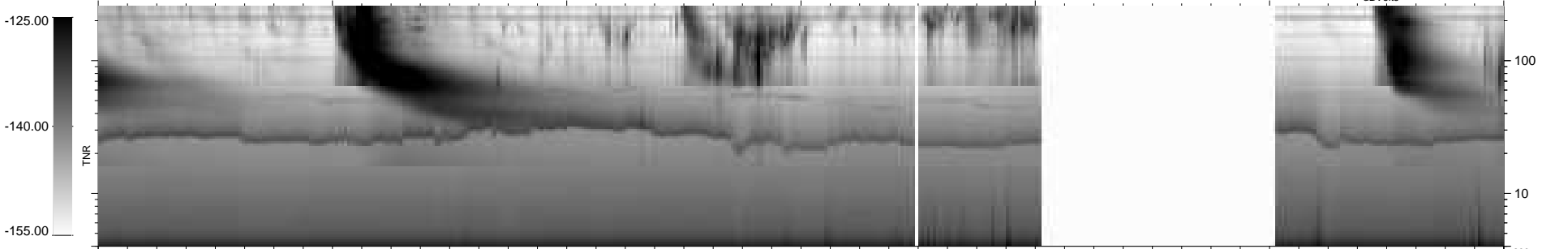
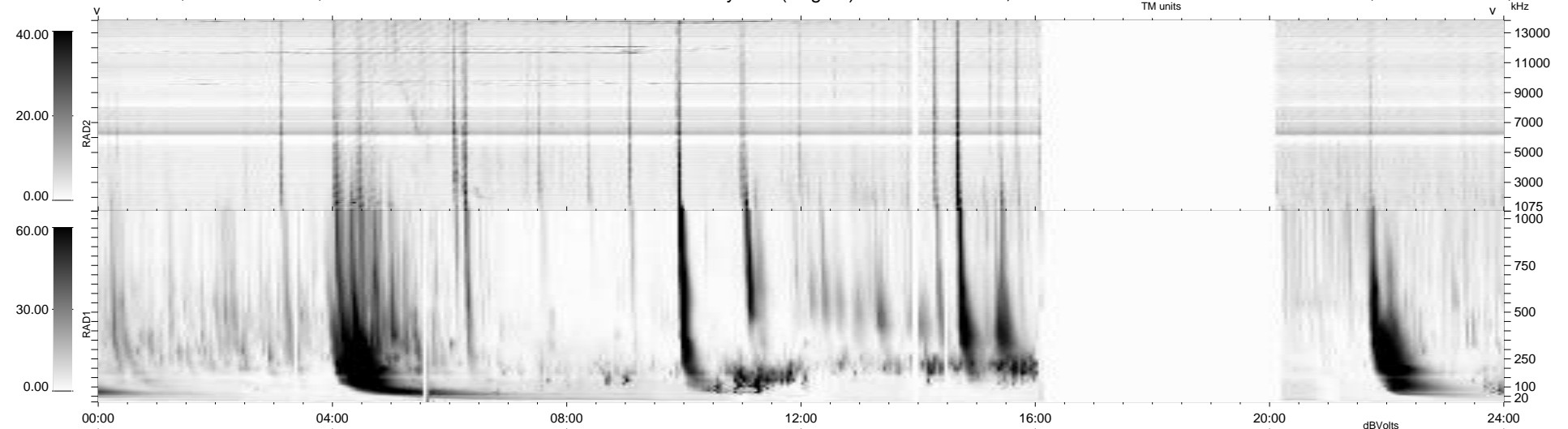
14 bad + 767 good MF/939MF projected (81%) - 158 missing MFs
 Avg interval = 180 secs
 Re = 262.36 (258.38, 43.61, 13.04 GSE)

windlib 2.0b

LZ version = v01

WIND/WAVES Summary Plot (Page 1) for 18-SEP-2015, DOY = 261

DAILY 2015-09-19 20:52:03
 Re = 262.31 (258.81, 40.55, 13.39 GSE)



RAD2 Antenna Ey
 Mode LIN(1)
 SUM/SEP SEP
 Toggle OFF
 RAD1 Antenna Ex
 Mode LIS(2,4)
 SUM/SEP SUM
 Toggle OFF
 TNR Antenna ExEy
 Mode A-32
 Sweep ACE