

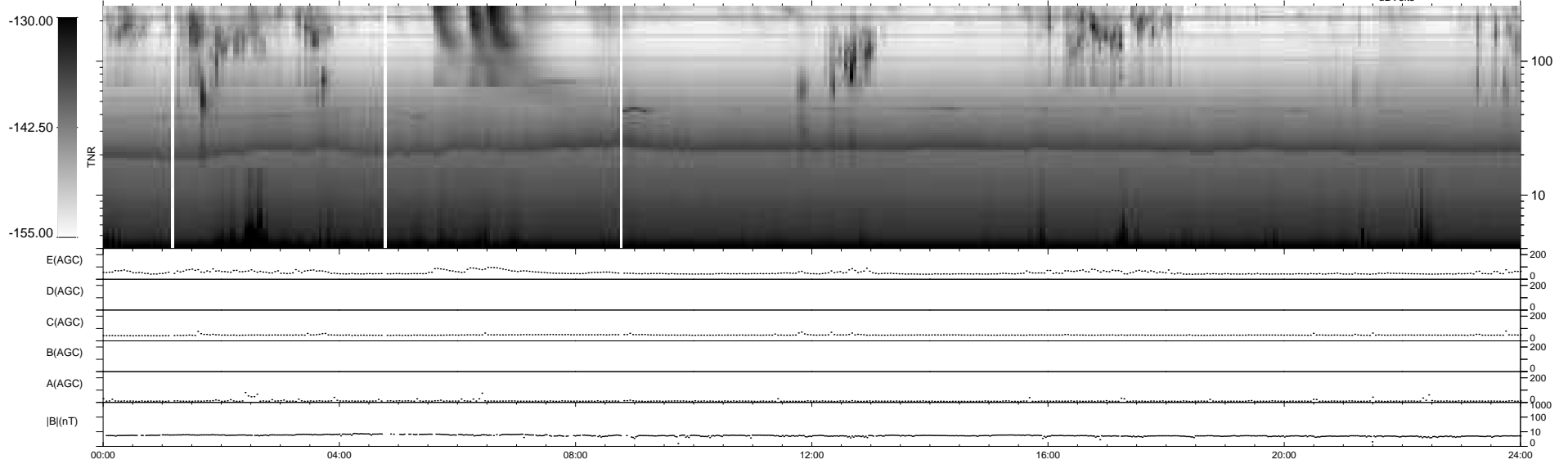
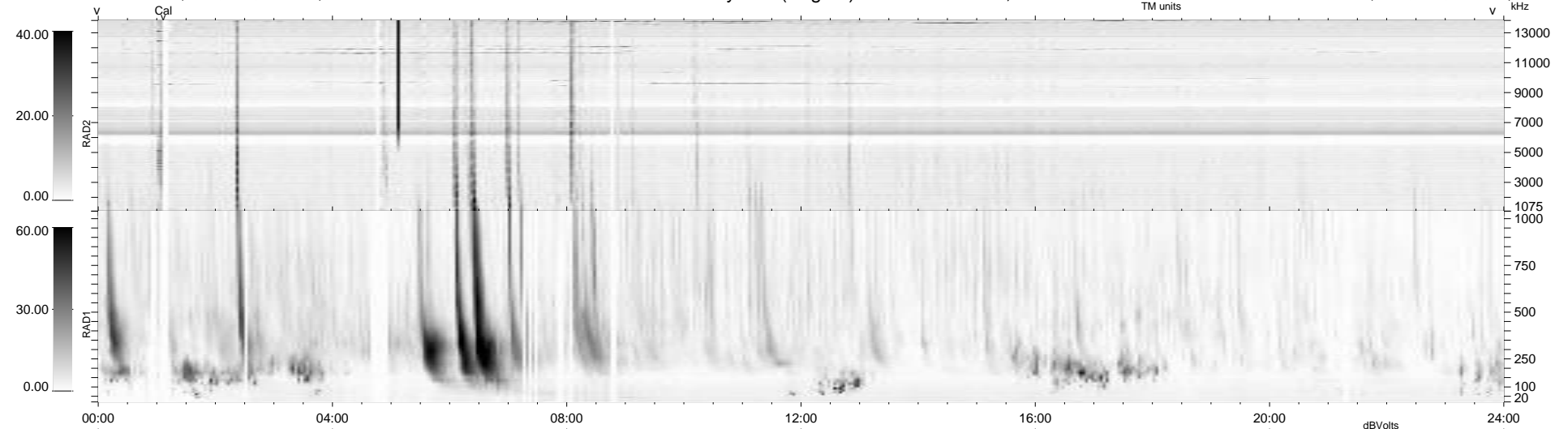
41 bad + 898 good MF/939MF projected (95%) - 0 missing MFs  
 Avg interval = 180 secs  
 Re = 262.24 (256.67, 52.42, 11.92 GSE)

windlib 2.0b

LZ version = v01

### WIND/WAVES Summary Plot (Page 1) for 15-SEP-2015, DOY = 258

DAILY 2015-09-16 21:52:07  
 Re = 262.33 (257.31, 49.58, 12.31 GSE)



RAD2  
 Antenna Ey  
 Mode LIN(1)  
 SUM/SEP SEP  
 Toggle OFF

RAD1  
 Antenna Ex  
 Mode LIS(2,4)  
 SUM/SEP SUM  
 Toggle OFF

TNR  
 Antenna ExEy  
 Mode A-32  
 Sweep ACE