

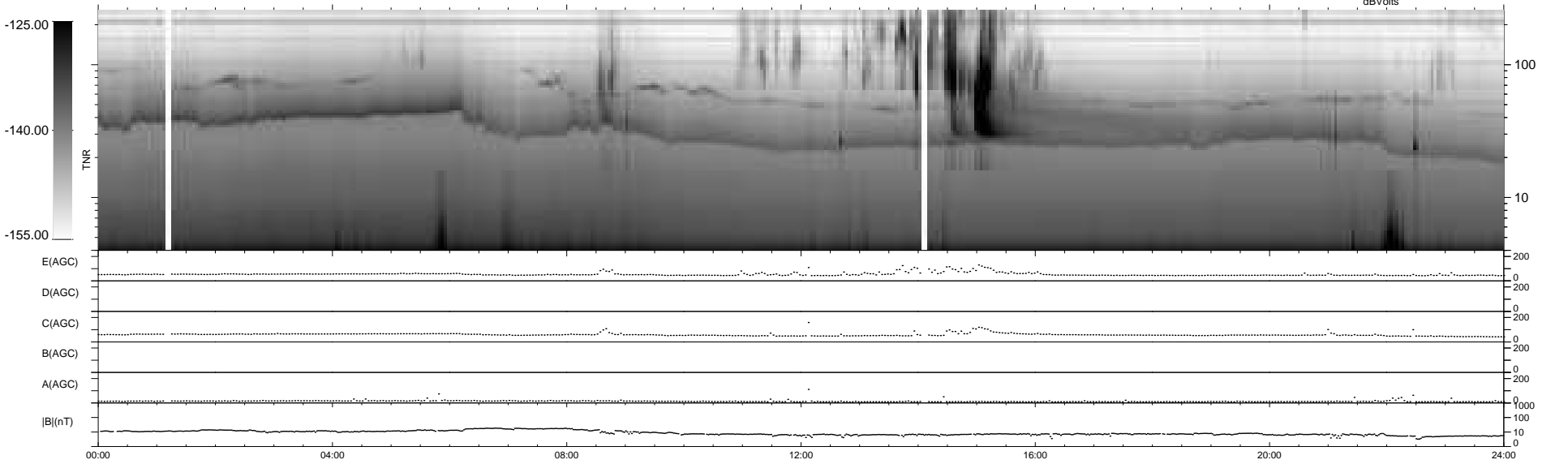
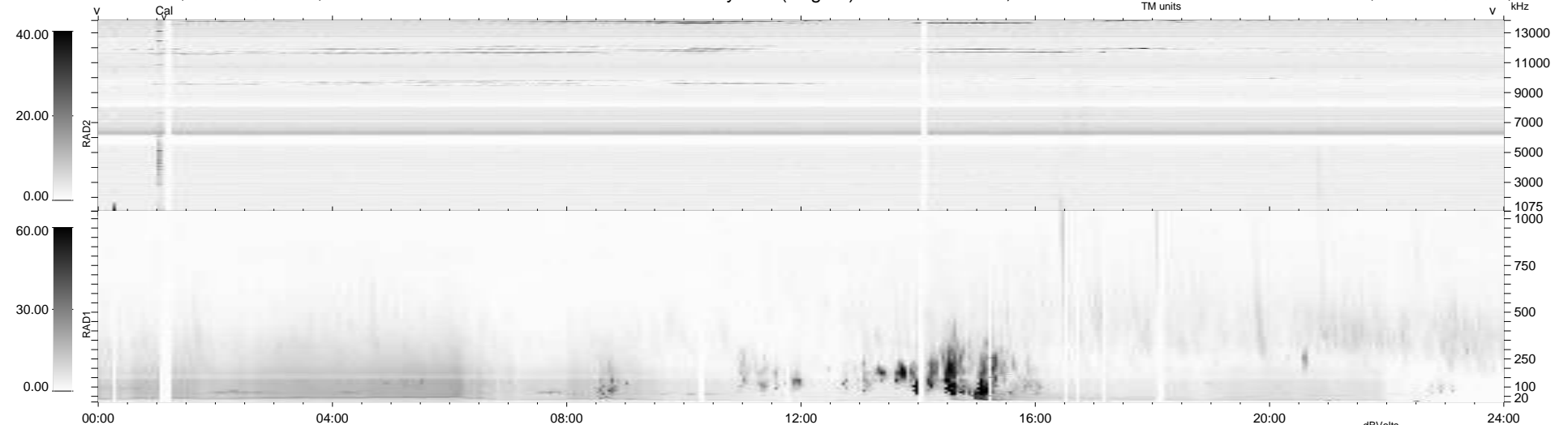
27 bad + 913 good MF/940MF projected (97%) - 0 missing MFs  
 Avg interval = 180 secs  
 Re = - 261.40 (253.44, 63.19, 10.27 GSE)

windlib 2.0b

LZ version = v01

### WIND/WAVES Summary Plot (Page 1) for 11-SEP-2015, DOY = 254

DAILY 2015-09-13 07:52:05  
 Re = 261.68 (254.34, 60.61, 10.69 GSE)



```

RAD2
Antenna Ey .....
Mode LIN(1) .....
SUM/SEP SEP .....
Toggle OFF .....

RAD1
Antenna Ex .....
Mode LIS(2,4) .....
SUM/SEP SUM .....
Toggle OFF .....

TNR
Antenna ExEy .....
Mode A-32 .....
Sweep ACE .....
  
```