

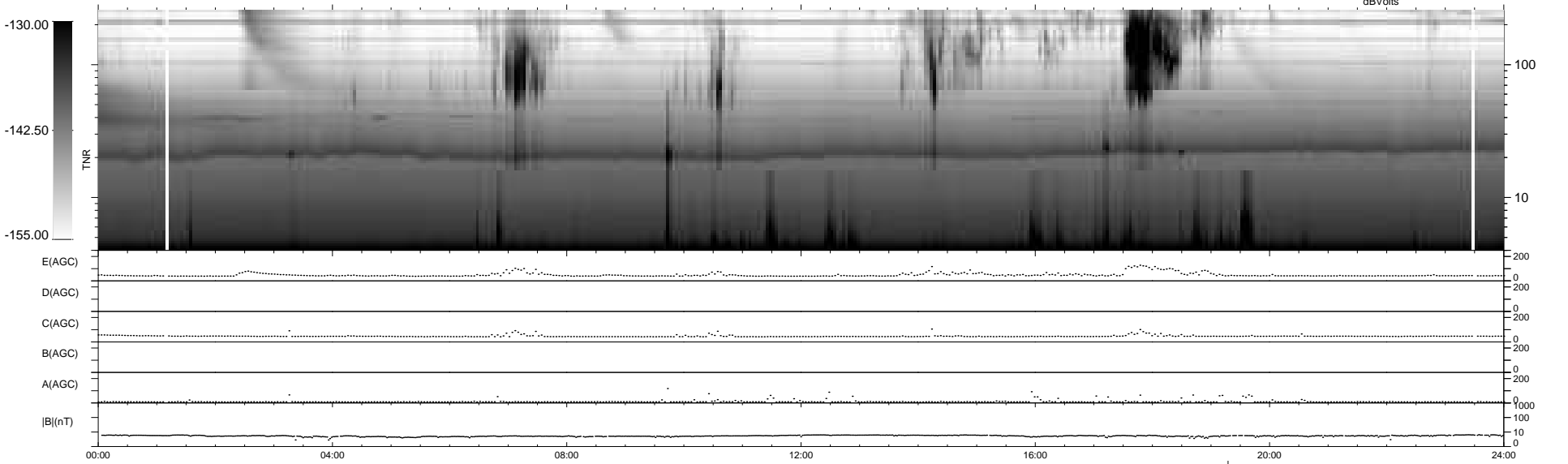
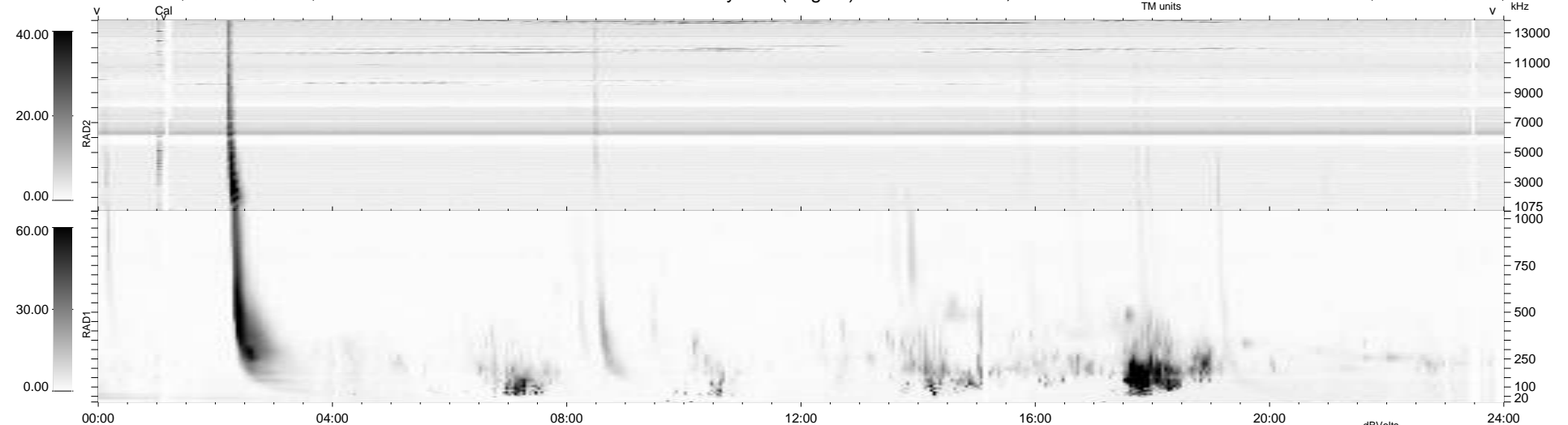
16 bad + 922 good MF/939MF projected (98%) - 1 missing MF
 Avg interval = 180 secs
 Re = 258.88 (246.89, 77.51, 7.56 GSE)

windlib 2.0b

LZ version = v01

WIND/WAVES Summary Plot (Page 1) for 05-SEP-2015, DOY = 248

DAILY 2015-09-06 03:52:06
 Re = 259.37 (248.07, 75.28, 8.02 GSE)



RAD2
 Antenna Ey
 Mode LIN(1)
 SUM/SEP SEP
 Toggle OFF
 RAD1
 Antenna Ex
 Mode LIS(2,4)
 SUM/SEP SUM
 Toggle OFF
 TNR
 Antenna ExEy
 Mode A-32
 Sweep ACE