

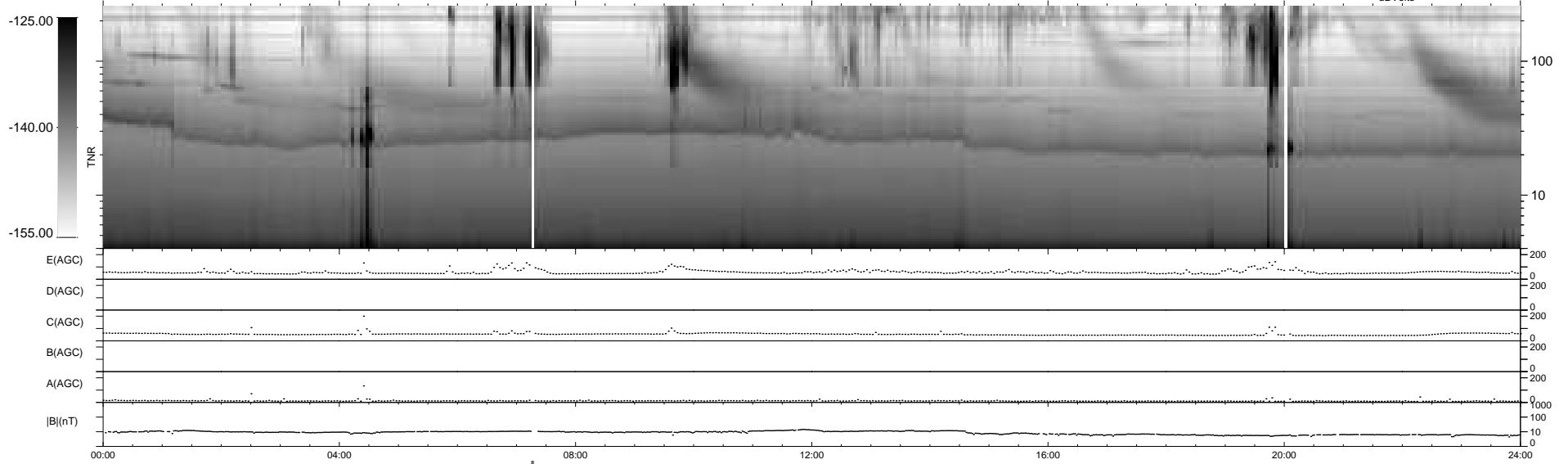
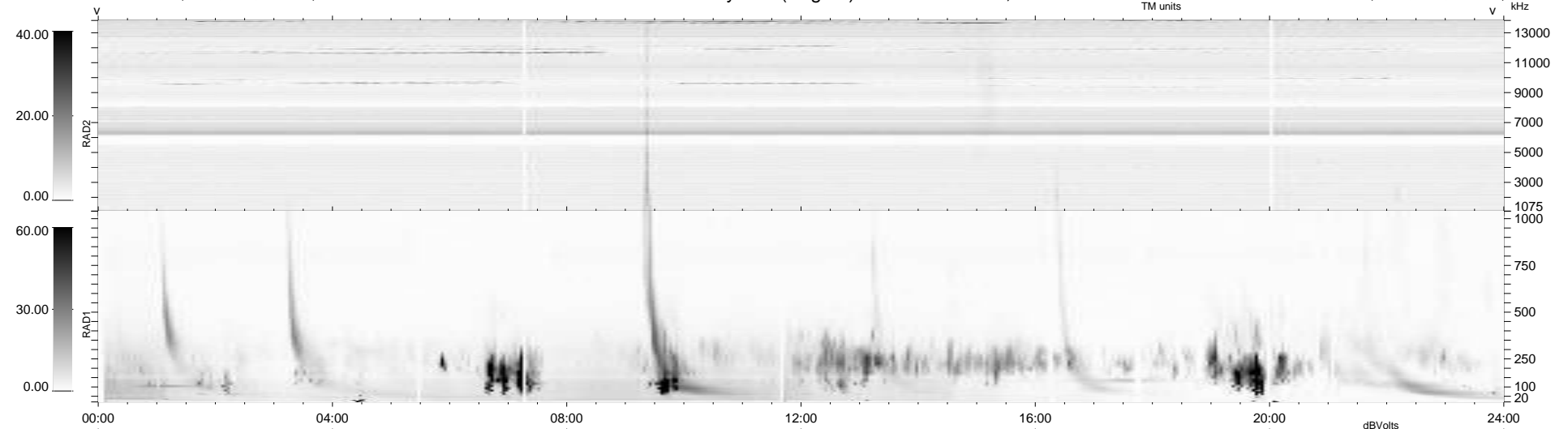
30 bad + 908 good MF/940MF projected (96%) - 2 missing MFs
 Avg interval = 180 secs
 Re = -258.38 (245.68, 79.70, 7.09 GSE)

windlib 2.0b

LZ version = v01

WIND/WAVES Summary Plot (Page 1) for 04-SEP-2015, DOY = 247

DAILY 2015-09-05 13:52:07
 Re = 258.88 (246.88, 77.52, 7.56 GSE)



RAD2
 Antenna Ey
 Mode LIN(1)
 SUM/SEP SEP
 Toggle OFF
 RAD1
 Antenna
 Mode
 SUM/SEP
 Toggle
 TNR
 Antenna ExEy
 Mode A-32
 Sweep ACE