

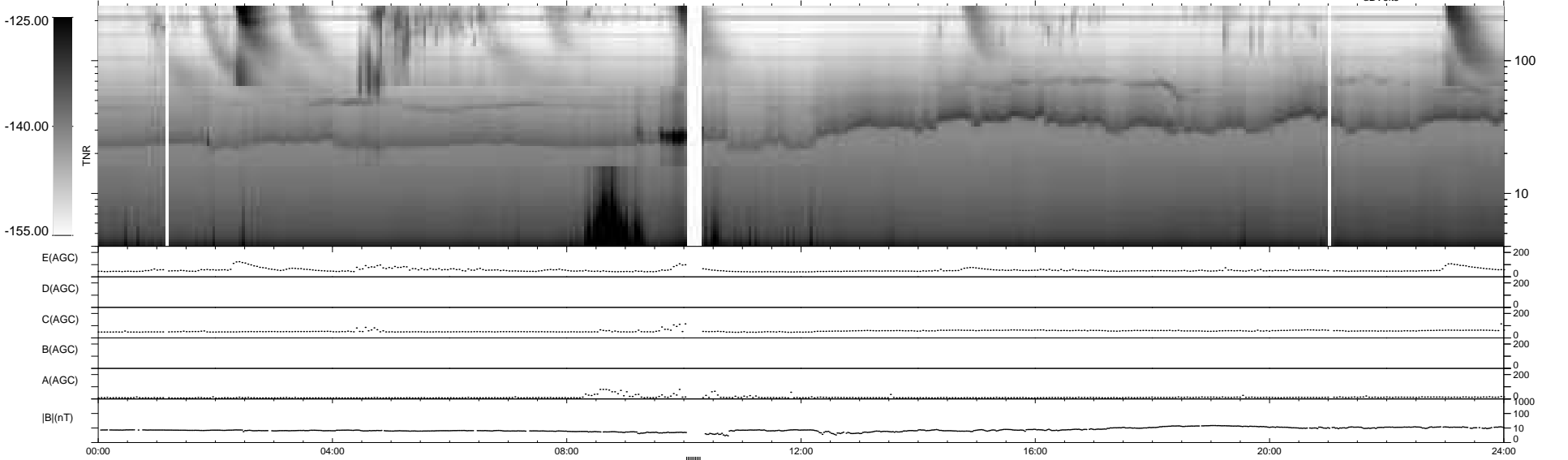
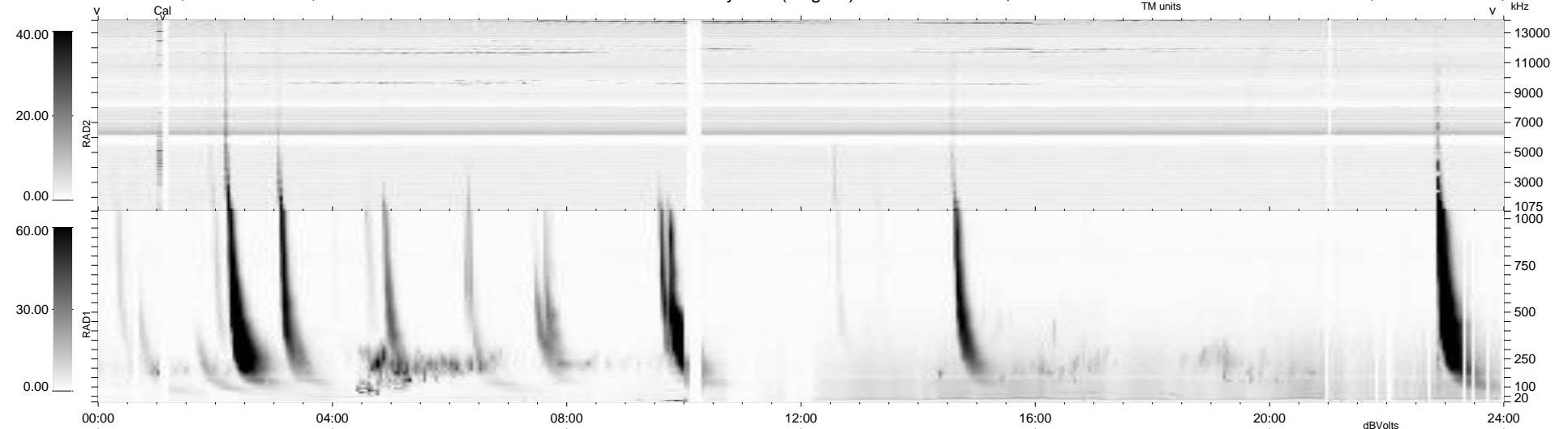
36 bad + 893 good MF/939MF projected (95%) - 10 missing MFs
 Avg interval = 180 secs
 Re = -257.88 (244.46, 81.83, 6.62 GSE)

windlib 2.0b

LZ version = v01

WIND/WAVES Summary Plot (Page 1) for 03-SEP-2015, DOY = 246

DAILY 2015-09-04 09:52:06
 Re = 258.38 (245.67, 79.71, 7.09 GSE)



RAD2
 Antenna Ey
 Mode LIN(1)
 SUM/SEP SEP
 Toggle OFF

RAD1
 Antenna Ex
 Mode LIS(2,4)
 SUM/SEP SUM
 Toggle OFF

TNR
 Antenna ExEy
 Mode A-32
 Sweep ACE