

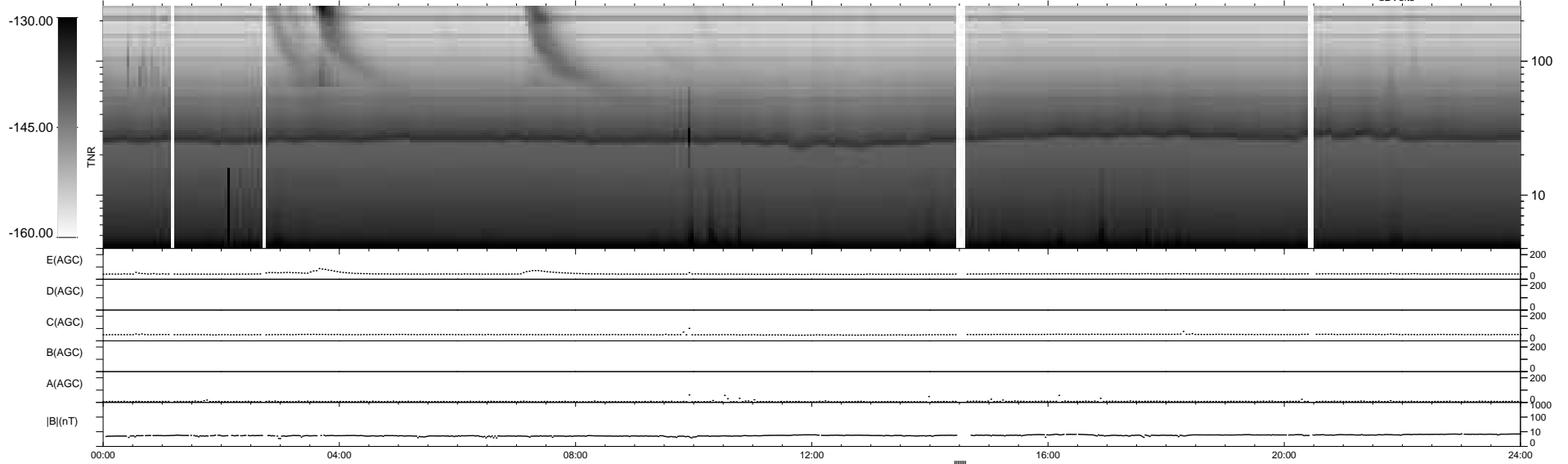
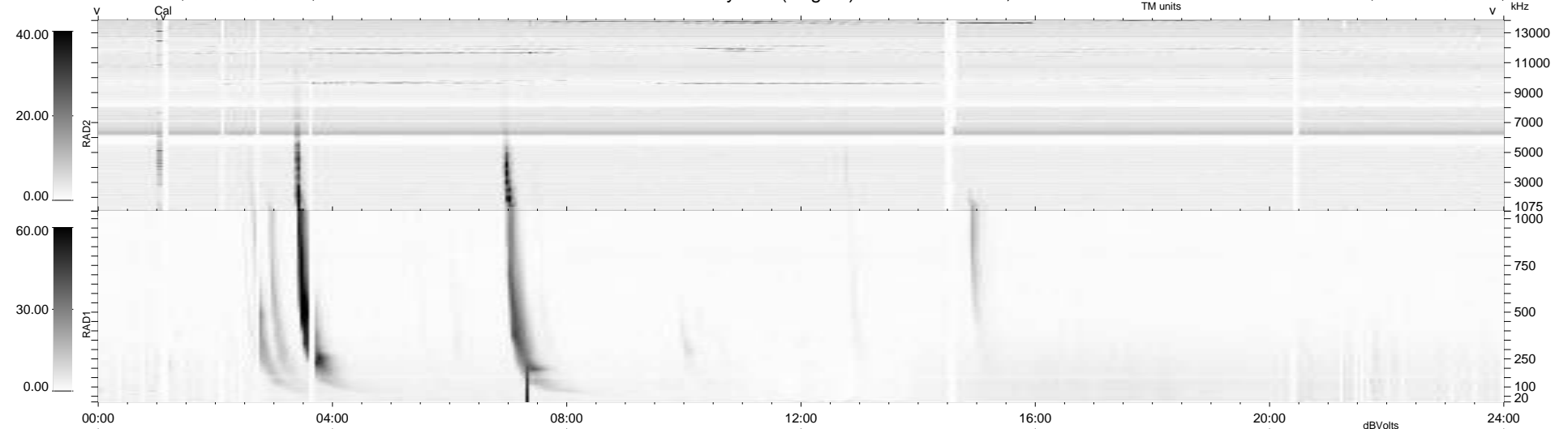
51 bad + 880 good MF/939MF projected (93%) - 8 missing MFs  
 Avg interval = 180 secs  
 Re = 256.88 (242.02, 85.91, 5.67 GSE)

windlib 2.0b

LZ version = v01

### WIND/WAVES Summary Plot (Page 1) for 01-SEP-2015, DOY = 244

DAILY 2015-09-02 10:52:04  
 Re = 257.37 (243.22, 83.92, 6.14 GSE)



RAD2  
 Antenna Ey  
 Mode LIN(1)  
 SUM/SEP SEP  
 Toggle OFF

RAD1  
 Antenna Ex  
 Mode LIS(2,4)  
 SUM/SEP SUM  
 Toggle OFF

TNR  
 Antenna ExEy  
 Mode A-32  
 Sweep ACE