

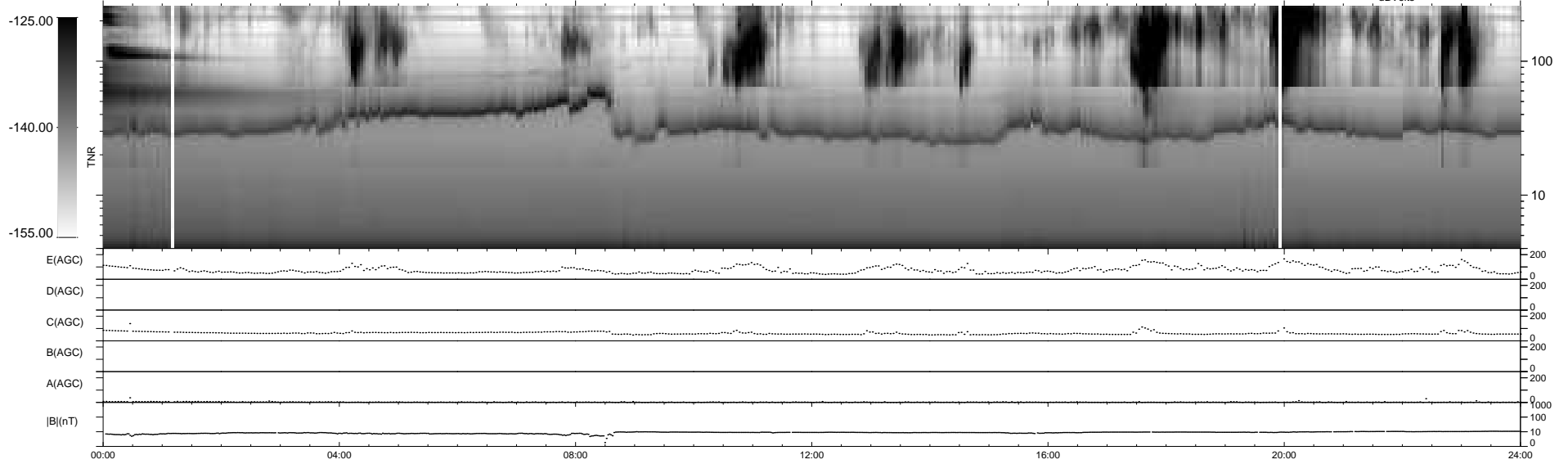
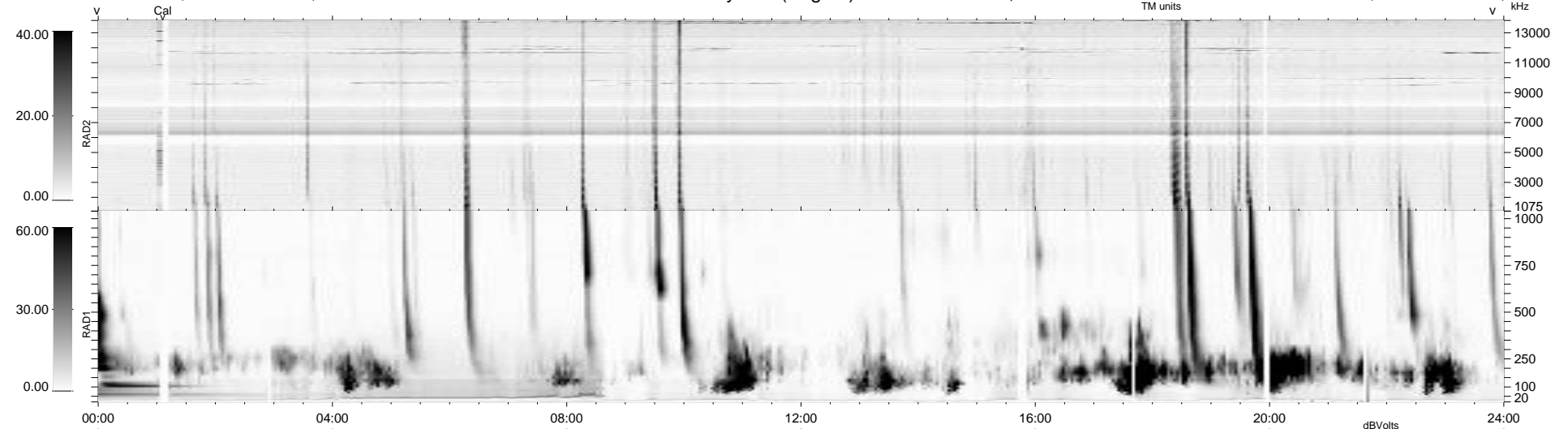
18 bad + 921 good MF/939MF projected (98%) - 0 missing MFs
 Avg interval = 180 secs
 Re = 254.03 (235.25, 95.84, 2.67 GSE)

windlib 2.0b

LZ version = v01

WIND/WAVES Summary Plot (Page 1) for 26-AUG-2015, DOY = 238

DAILY 2015-08-27 09:52:06
 Re = 254.51 (236.30, 94.49, 3.18 GSE)



```

RAD2
Antenna Ey .....
Mode LIN(1) .....
SUM/SEP SEP .....
Toggle OFF .....

RAD1
Antenna Ex .....
Mode LIS(2,4) .....
SUM/SEP SUM .....
Toggle OFF .....

TNR
Antenna ExEy .....
Mode A-32 .....
Sweep ACE .....
  
```