

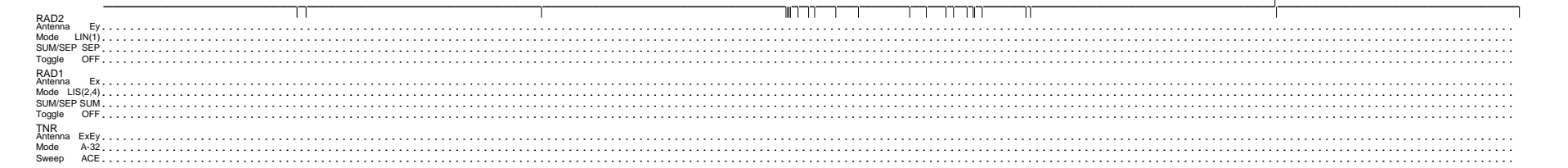
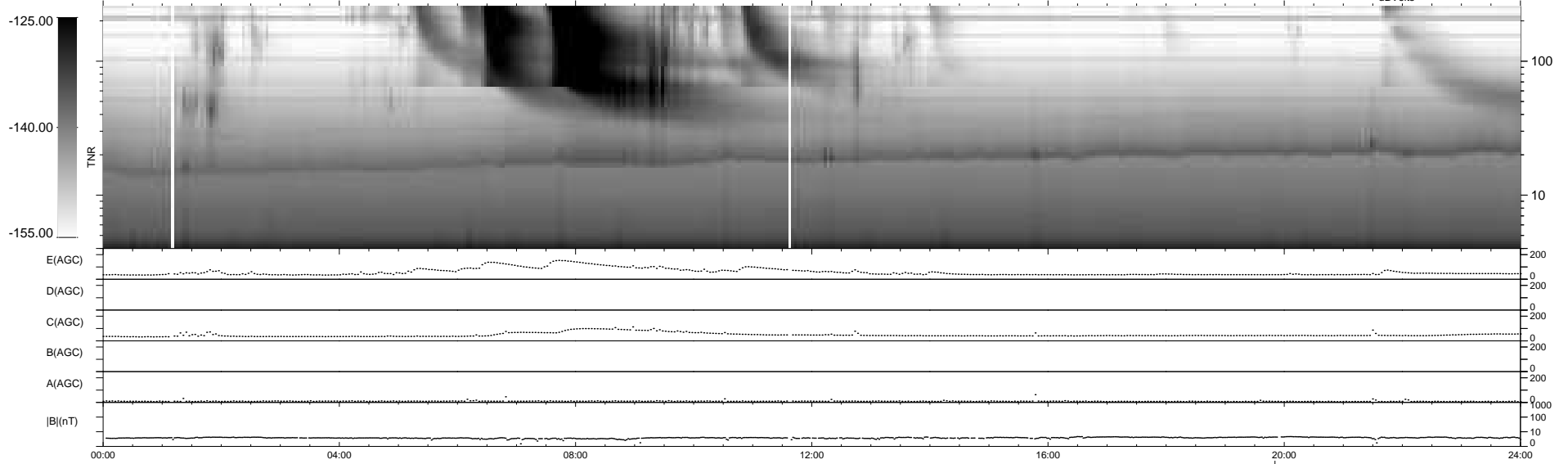
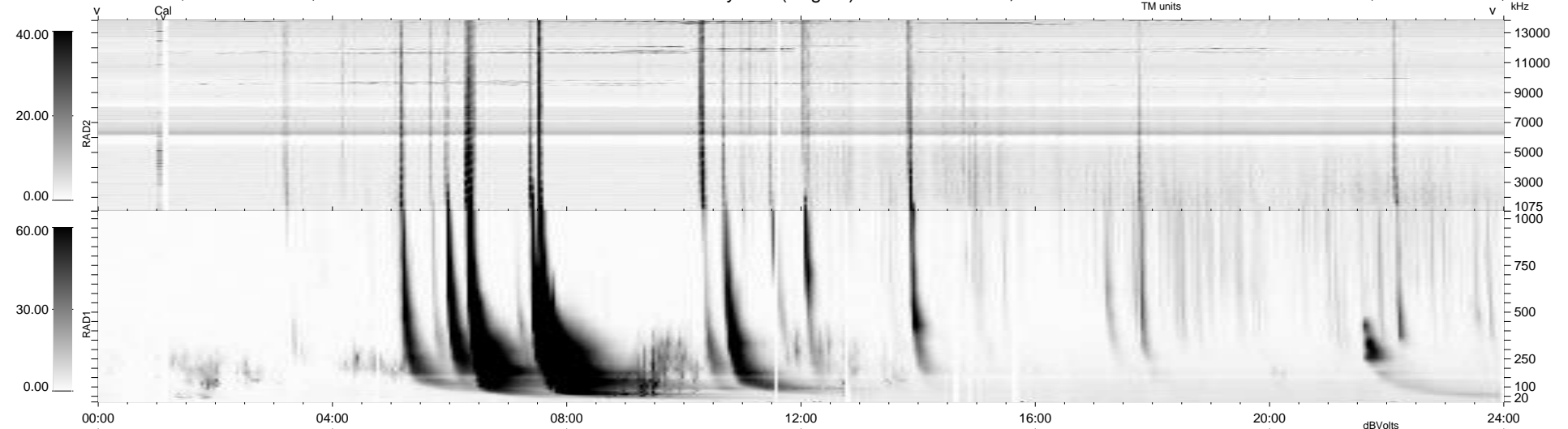
24 bad + 914 good MF/939MF projected (97%) - 1 missing MF  
 Avg interval = 180 secs  
 Re = 252.99 (233.17, 98.15, 1.61 GSE)

windlib 2.0b

LZ version = v02

### WIND/WAVES Summary Plot (Page 1) for 24-AUG-2015, DOY = 236

DAILY 2015-08-25 11:52:58  
 Re = 253.52 (234.19, 97.07, 2.14 GSE)



RAD2  
 Antenna Ey .....  
 Mode LIN(1) .....  
 SUM/SEP SEP .....  
 Toggle OFF .....  
 RAD1  
 Antenna Ex .....  
 Mode LIS(2/4) .....  
 SUM/SEP SUM .....  
 Toggle OFF .....  
 TNR  
 Antenna ExEy .....  
 Mode A-32 .....  
 Sweep ACE .....