

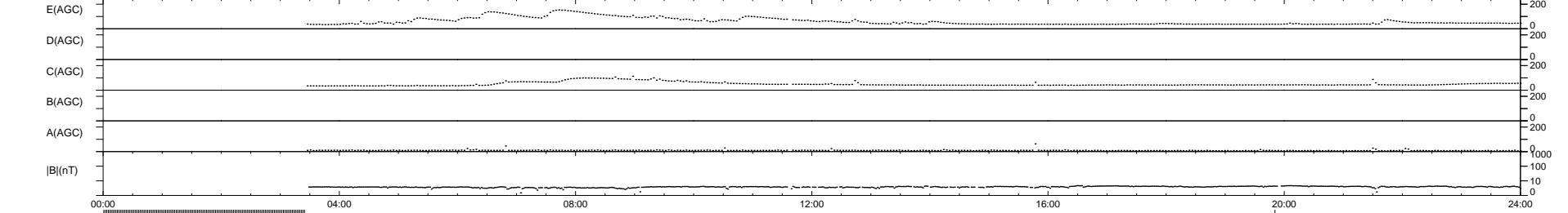
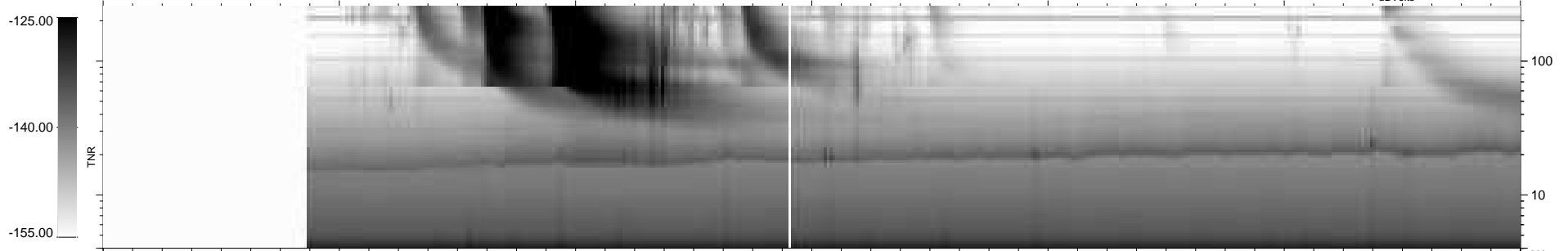
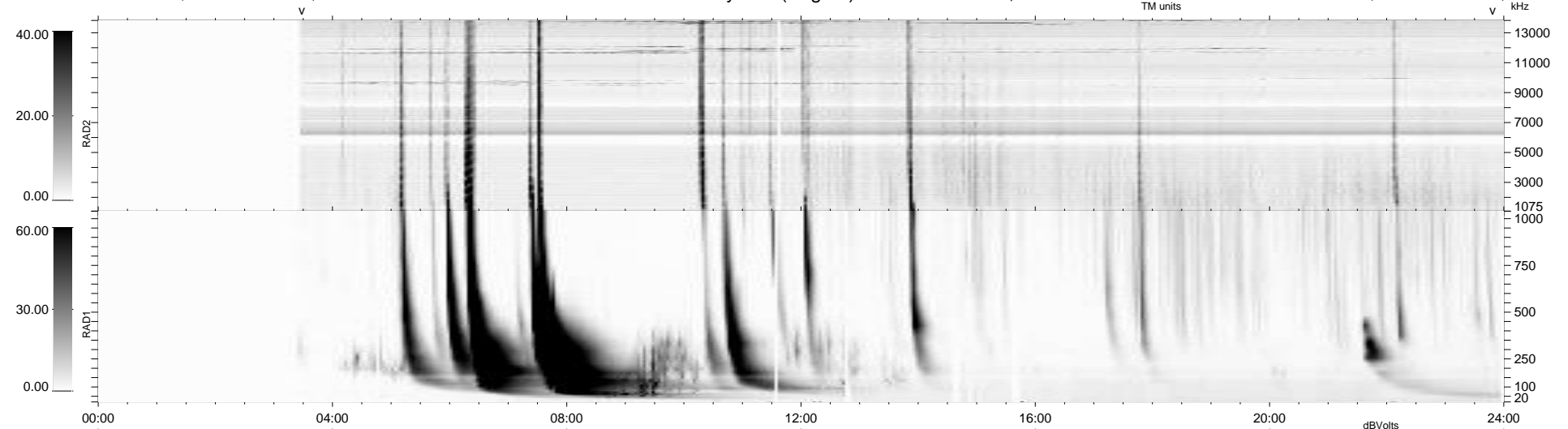
23 bad + 781 good MF/939MF projected (83%) - 135 missing MFs
Avg interval = 180 secs
Re = 253.07 (233.32, 98.00, 1.69 GSE)

windlib 2.0b

LZ version = v01

WIND/WAVES Summary Plot (Page 1) for 24-AUG-2015, DOY = 236

DAILY 2015-08-25 09:52:04
Re = 253.52 (234.19, 97.07, 2.14 GSE)



RAD2 Antenna Mode SUM/SEP Toggle
RAD1 Antenna Mode SUM/SEP Toggle
TNR Antenna Mode Sweep