

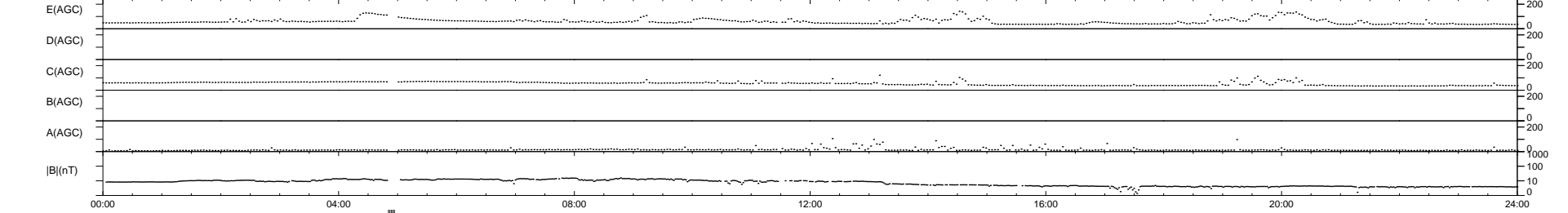
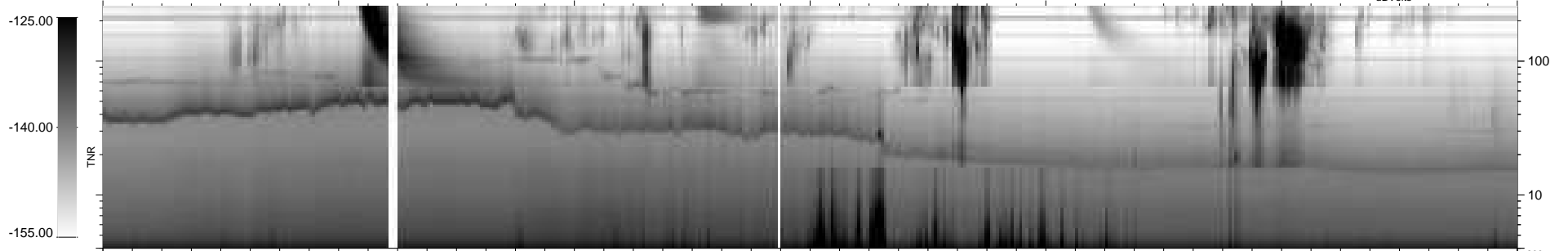
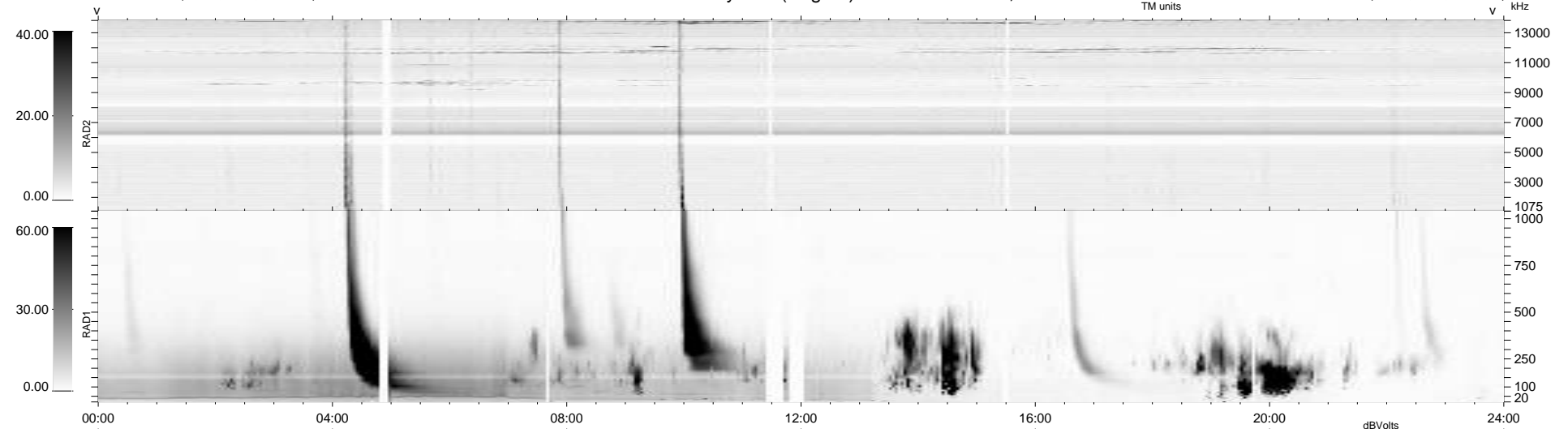
43 bad + 891 good MF/939MF projected (94%) - 5 missing MFs
 Avg interval = 180 secs
 Re = -252.41 (232.15, 99.09, 1.08 GSE)

windlib 2.0b

LZ version = v02

WIND/WAVES Summary Plot (Page 1) for 23-AUG-2015, DOY = 235

DAILY 2015-08-25 11:52:03
 Re = 252.99 (233.16, 98.16, 1.61 GSE)



```

RAD2
Antenna Ey .....
Mode LIN(1) .....
SUM/SEP SEP .....
Toggle OFF .....

RAD1
Antenna Ex .....
Mode LIS(2,4) .....
SUM/SEP SUM .....
Toggle OFF .....

TNR
Antenna ExEy .....
Mode A-32 .....
Sweep ACE .....
  
```