

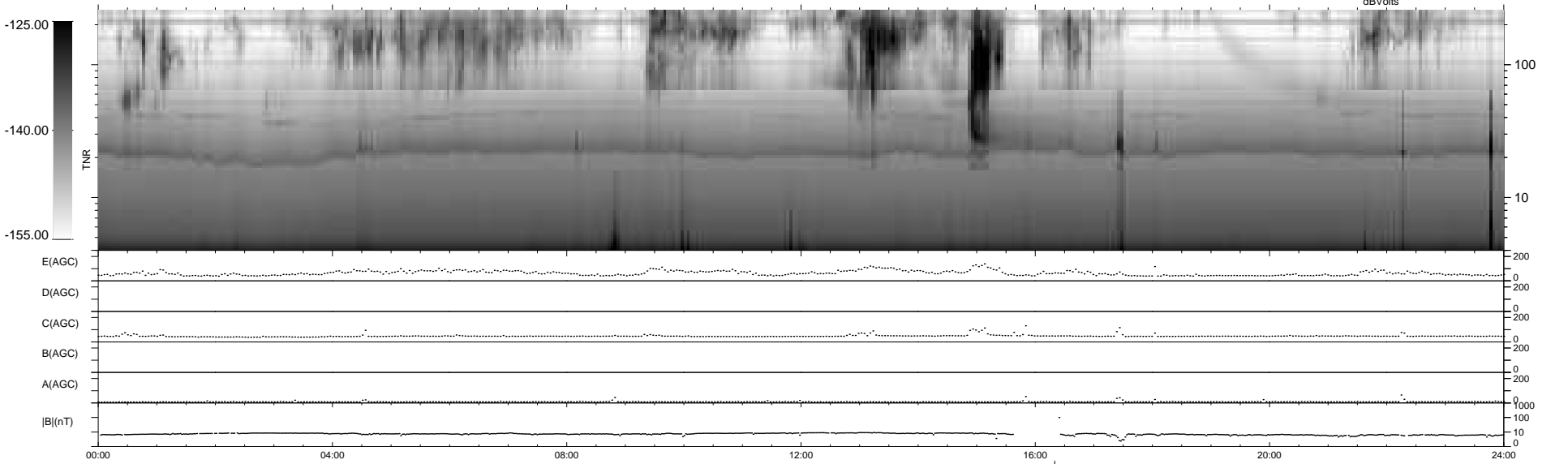
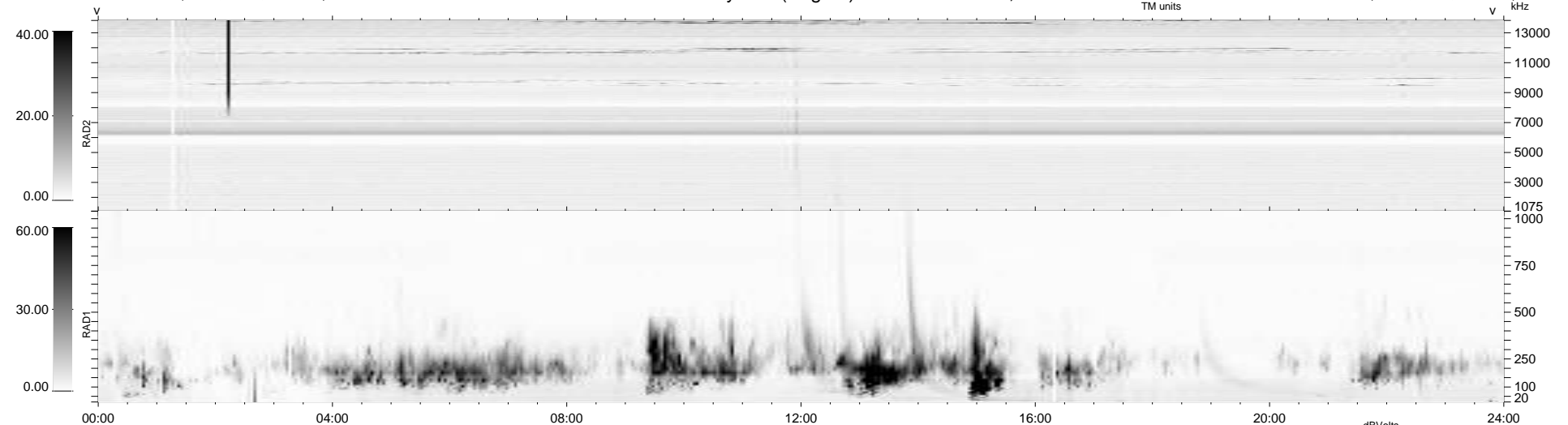
28 bad + 911 good MF/940MF projected (96%) - 1 missing MF
 Avg interval = 180 secs
 Re = 249.61 (228.08, 101.40, -1.08 GSE)

windlib 2.0b

LZ version = v01

WIND/WAVES Summary Plot (Page 1) for 19-AUG-2015, DOY = 231

DAILY 2015-08-20 03:52:04
 Re = 250.39 (229.09, 101.04, -0.54 GSE)



RAD2
 Antenna Ey
 Mode LIN(1)
 SUM/SEP SEP
 Toggle OFF

RAD1
 Antenna Ex
 Mode LIS(2,4)
 SUM/SEP SUM
 Toggle OFF

TNR
 Antenna ExEy
 Mode A-32
 Sweep ACE