

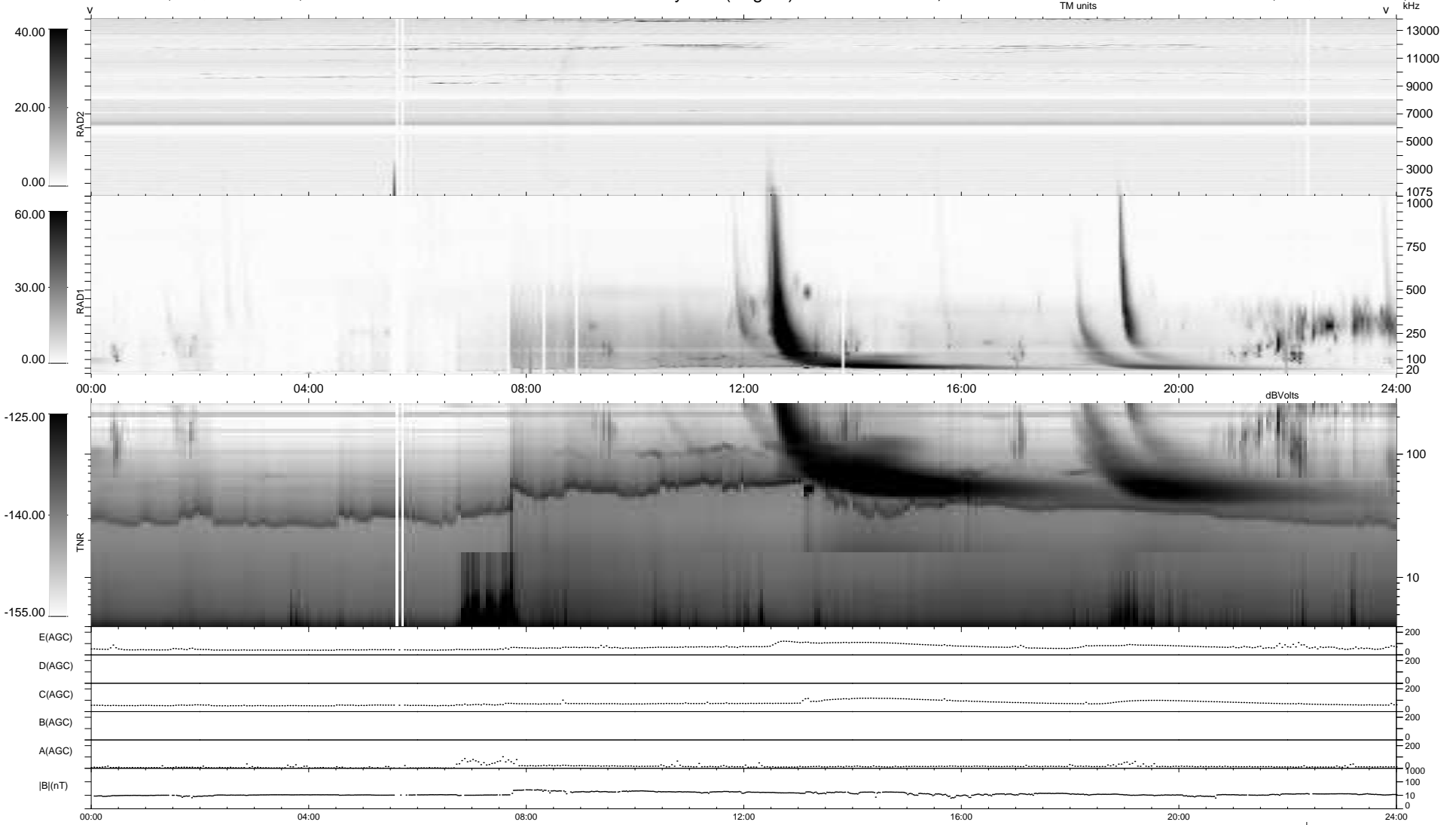
32 bad + 906 good MF/939MF projected (96%) - 1 missing MF  
 Avg interval = 180 secs  
 Re = -245.86 (223.89, 101.53, -3.23 GSE)

windlib 2.0b

LZ version = v02

### WIND/WAVES Summary Plot (Page 1) for 15-AUG-2015, DOY = 227

DAILY 2015-08-17 10:52:05  
 Re = 246.88 (224.95, 101.69, -2.70 GSE)



RAD2  
 Antenna Ey  
 Mode LIN(1)  
 SUM/SEP SEP  
 Toggle OFF

RAD1  
 Antenna Ex  
 Mode LIS(2,4)  
 SUM/SEP SUM  
 Toggle OFF

TNR  
 Antenna ExEy  
 Mode A-32  
 Sweep ACE