

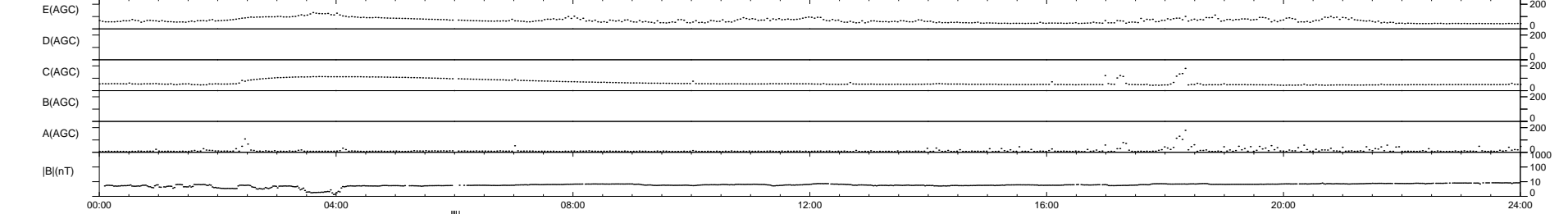
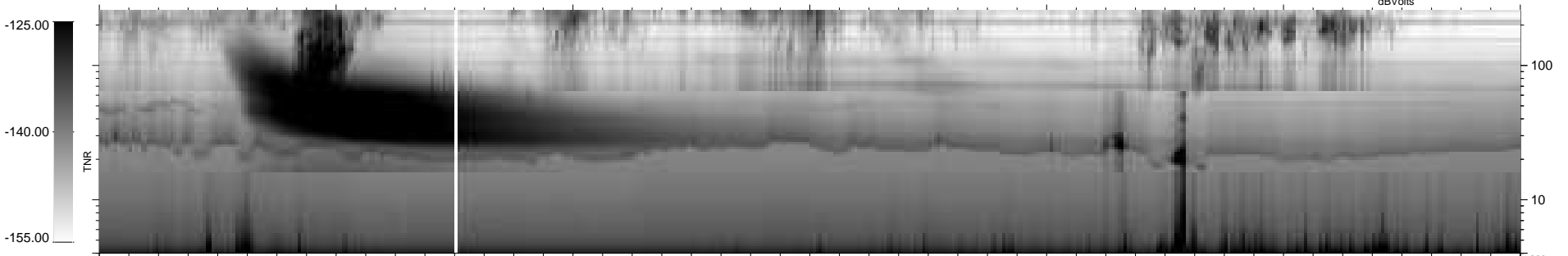
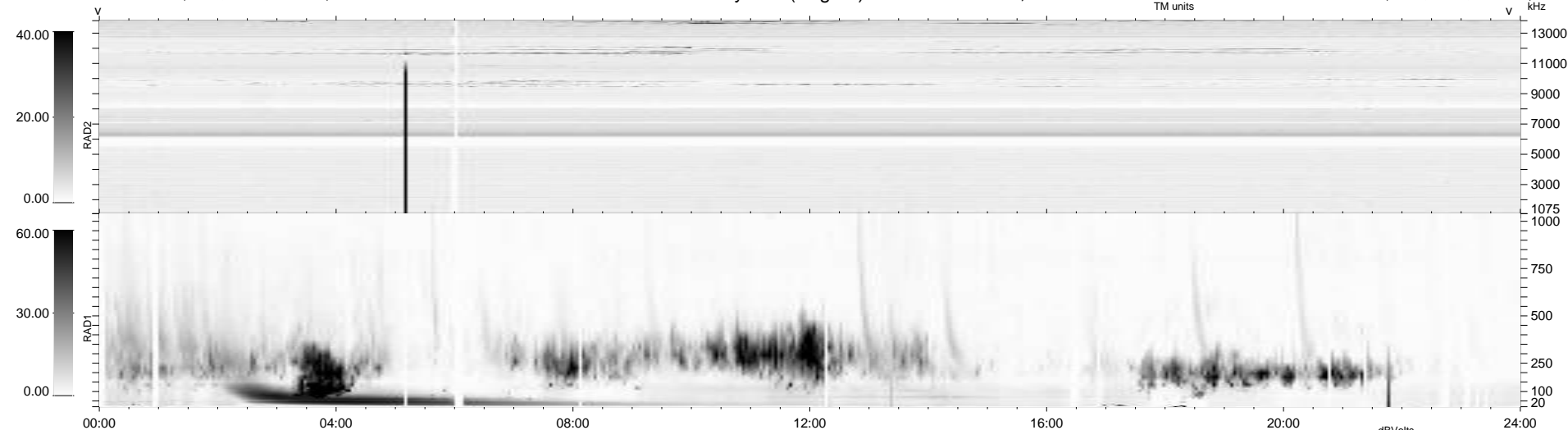
33 bad + 901 good MF/939MF projected (95%) - 5 missing MFs  
Avg interval = 180 secs  
Re = -243.62 (221.73, 100.84, -4.28 GSE)

windlib 2.0b

LZ version = v02

### WIND/WAVES Summary Plot (Page 1) for 13-AUG-2015, DOY = 225

DAILY 2015-08-18 10:52:06  
Re = 244.76 (222.81, 101.24, -3.77 GSE)



RAD2  
Antenna Ey .....  
Mode LIN(1) .....  
SUM/SEP SEP .....  
Toggle OFF .....  
RAD1  
Antenna .....  
Mode .....  
SUM/SEP .....  
Toggle .....  
TNR  
Antenna ExEy .....  
Mode A-32 .....  
Sweep ACE .....