

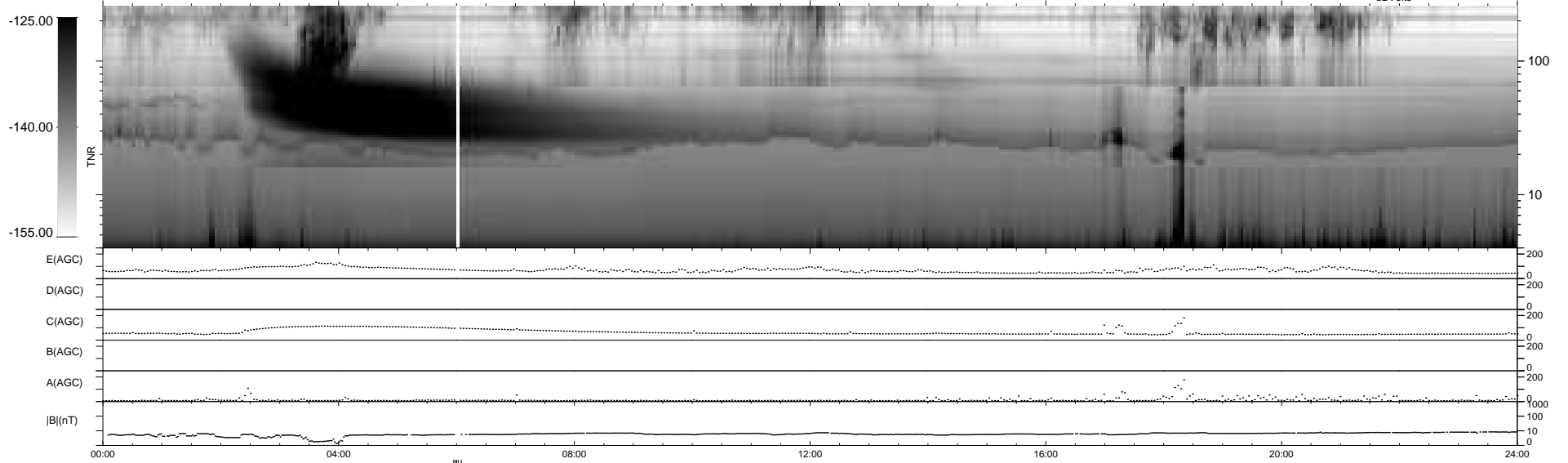
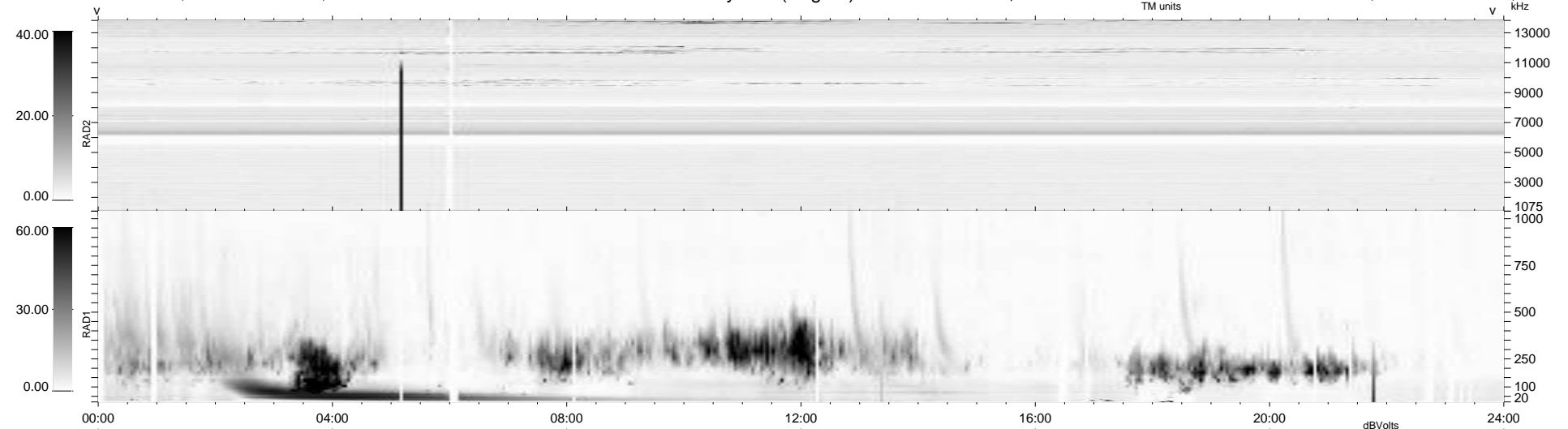
33 bad + 901 good MF/939MF projected (95%) - 5 missing MFs
 Avg interval = 180 secs
 Re = -243.62 (221.73, 100.84, -4.28 GSE)

windlib 2.0b

LZ version = v01

WIND/WAVES Summary Plot (Page 1) for 13-AUG-2015, DOY = 225

DAILY 2015-08-14 09:52:07
 Re = 244.76 (222.81, 101.24, -3.77 GSE)



```

RAD2
Antenna Ey .....
Mode LIN(1) .....
SUM/SEP SEP .....
Toggle OFF .....

RAD1
Antenna .....
Mode .....
SUM/SEP .....
Toggle .....

TNR
Antenna ExEy .....
Mode A-32 .....
Sweep ACE .....
  
```