

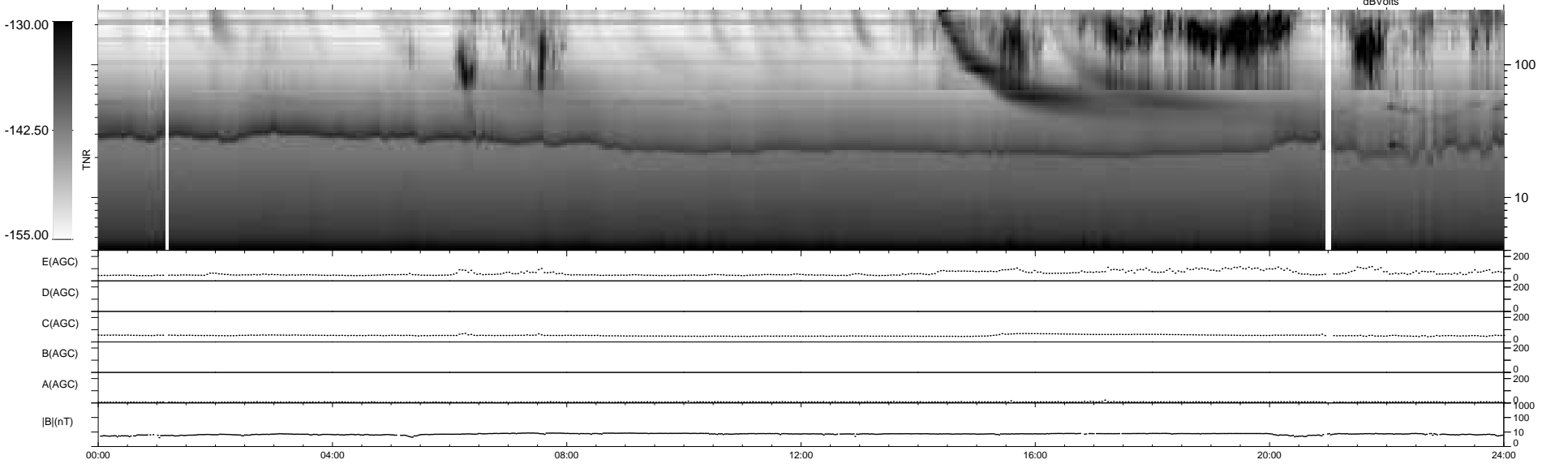
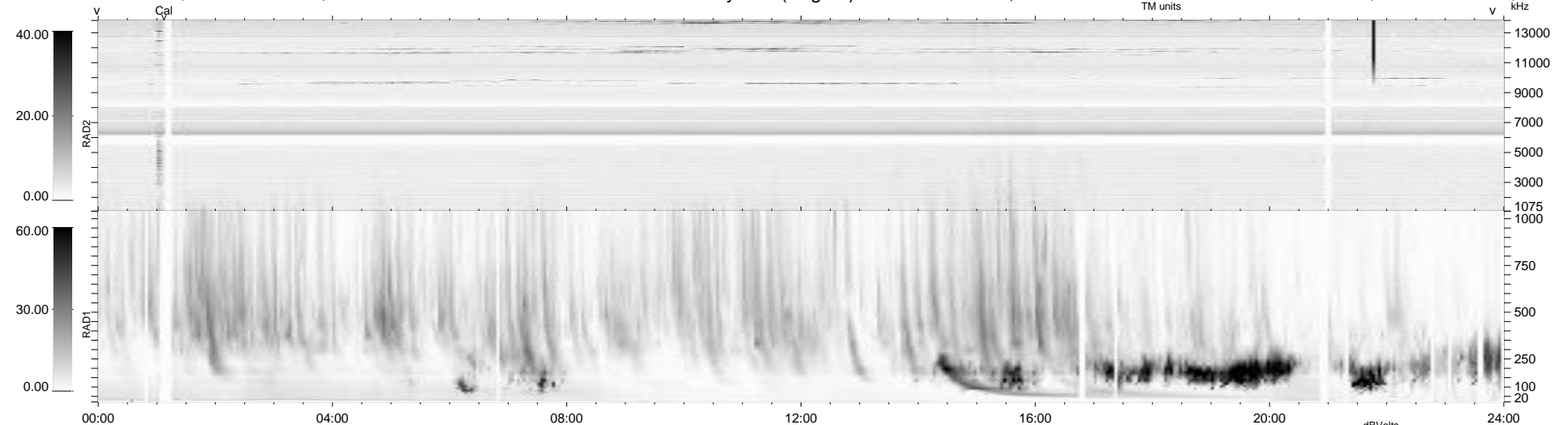
35 bad + 905 good MF/940MF projected (96%) - 0 missing MFs
 Avg interval = 180 secs
 Re = 242.43 (220.64, 100.33, -4.80 GSE)

windlib 2.0b

LZ version = v01

WIND/WAVES Summary Plot (Page 1) for 12-AUG-2015, DOY = 224

DAILY 2015-08-13 10:52:04
 Re = 243.62 (221.73, 100.84, -4.29 GSE)



RAD2
 Antenna Ey
 Mode LIN(1)
 SUM/SEP SEP
 Toggle OFF

RAD1
 Antenna Ex
 Mode LIS(2,4)
 SUM/SEP SUM
 Toggle OFF

TNR
 Antenna ExEy
 Mode A-32
 Sweep ACE