

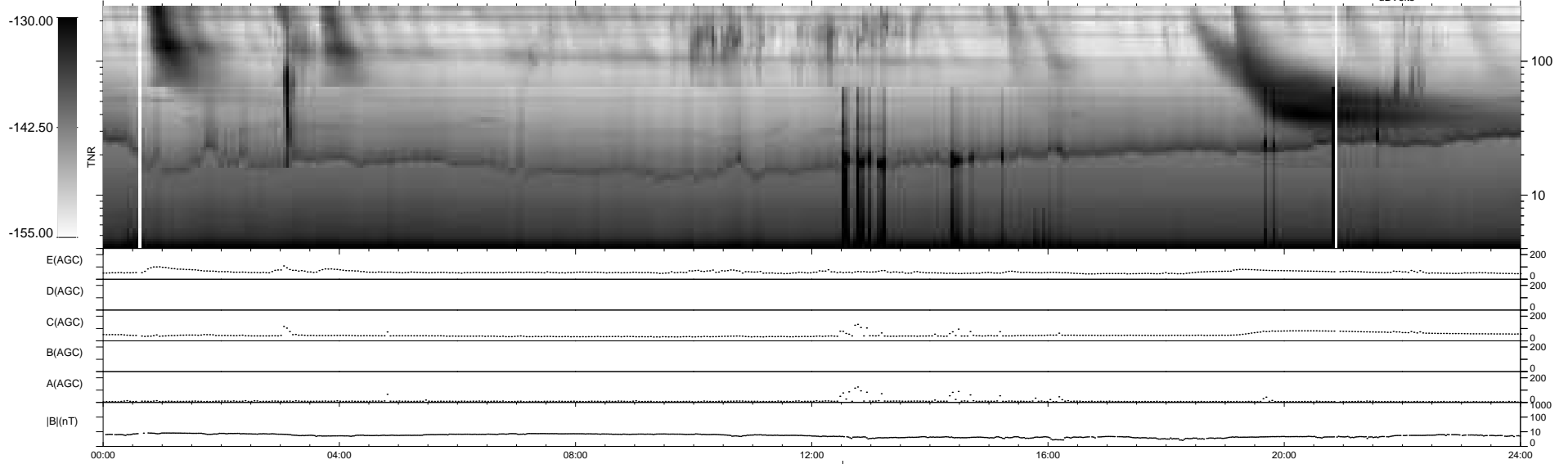
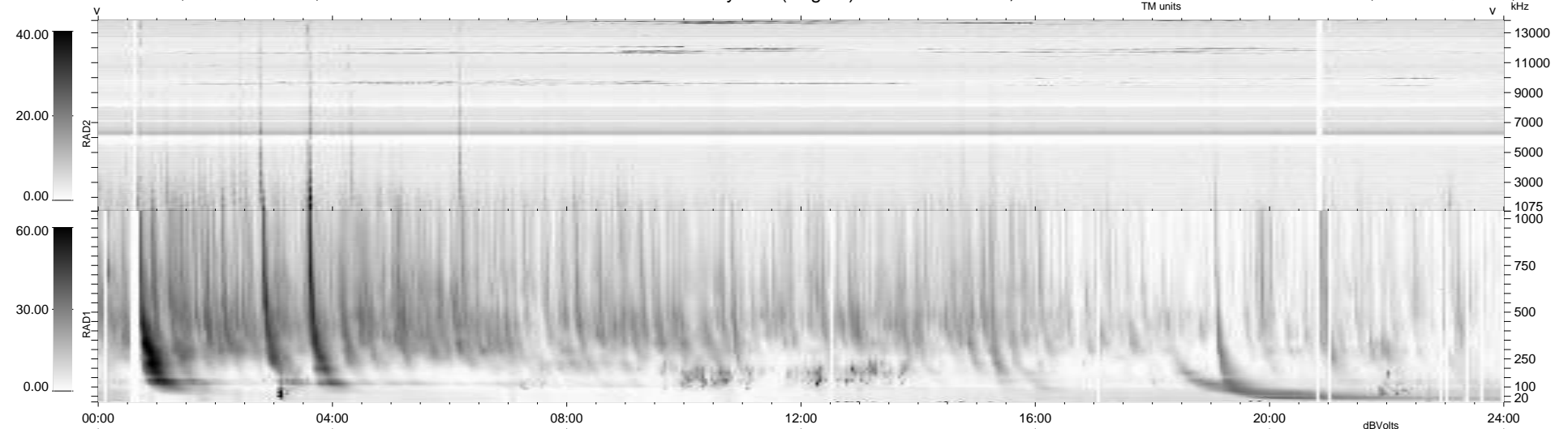
31 bad + 907 good MF/939MF projected (96%) - 1 missing MF
 Avg interval = 180 secs
 Re = 241.19 (219.55, 99.71, -5.30 GSE)

windlib 2.0b

LZ version = v01

WIND/WAVES Summary Plot (Page 1) for 11-AUG-2015, DOY = 223

DAILY 2015-08-12 10:52:04
 Re = 242.42 (220.64, 100.32, -4.80 GSE)



RAD2
 Antenna Ey
 Mode LIN(1)
 SUM/SEP SEP
 Toggle OFF
 RAD1
 Antenna Ex
 Mode LIS(2,4)
 SUM/SEP SUM
 Toggle OFF
 TNR
 Antenna ExEy
 Mode A-32
 Sweep ACE