

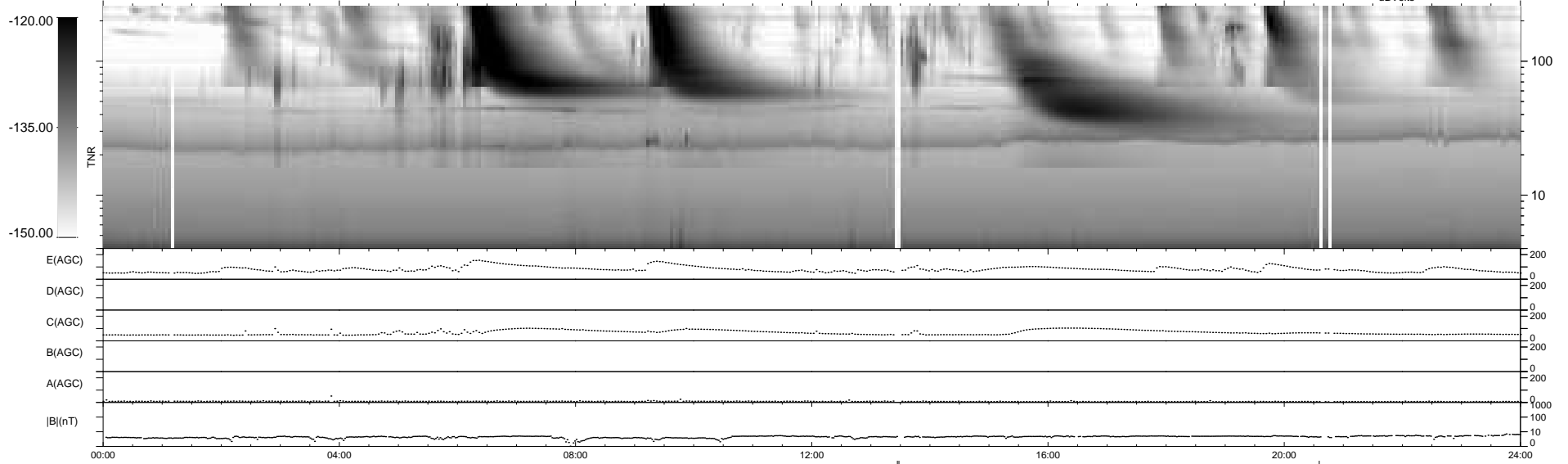
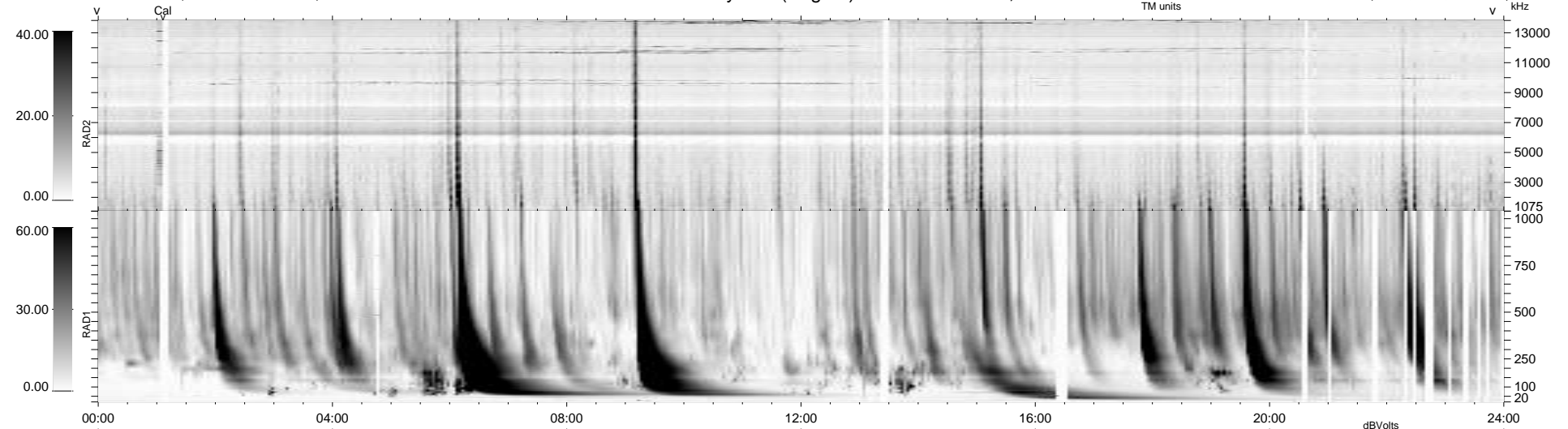
42 bad + 894 good MF/939MF projected (95%) - 3 missing MFs
 Avg interval = 180 secs
 Re = 239.91 (218.45, 99.00, -5.80 GSE)

windlib 2.0b

LZ version = v01

WIND/WAVES Summary Plot (Page 1) for 10-AUG-2015, DOY = 222

DAILY 2015-08-11 10:52:13
 Re = 241.18 (219.54, 99.71, -5.31 GSE)



RAD2
 Antenna Ey
 Mode LIN(1)
 SUM/SEP SEP
 Toggle OFF
 RAD1
 Antenna Ex
 Mode LIS(2,4)
 SUM/SEP SUM
 Toggle OFF
 TNR
 Antenna ExEy
 Mode A-32
 Sweep ACE