

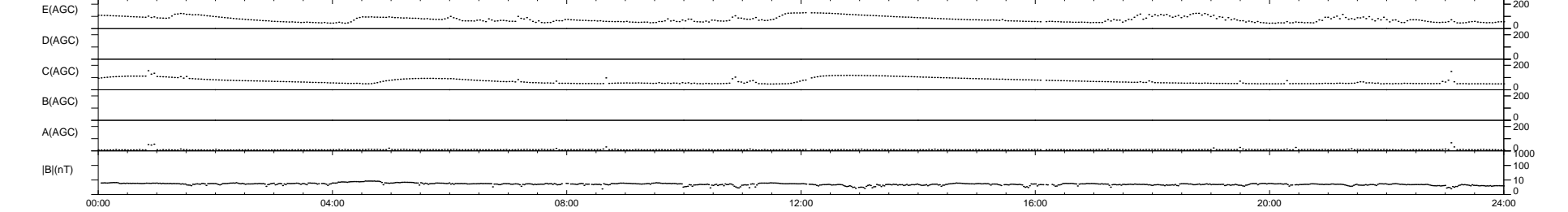
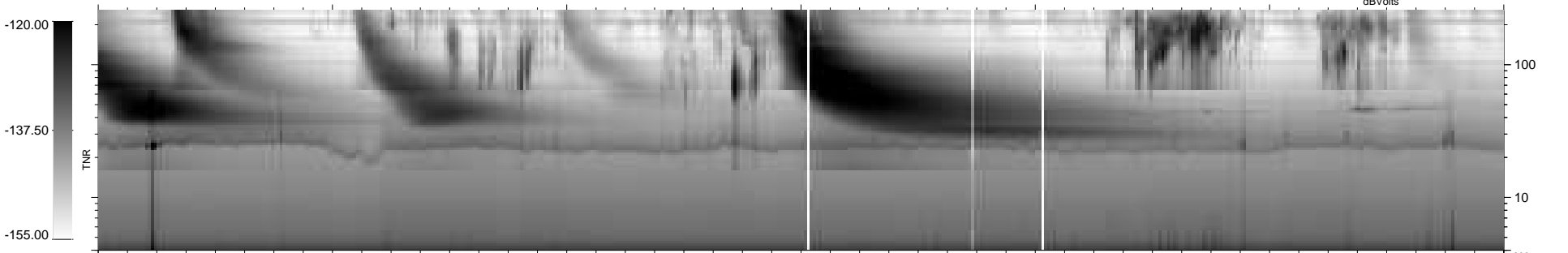
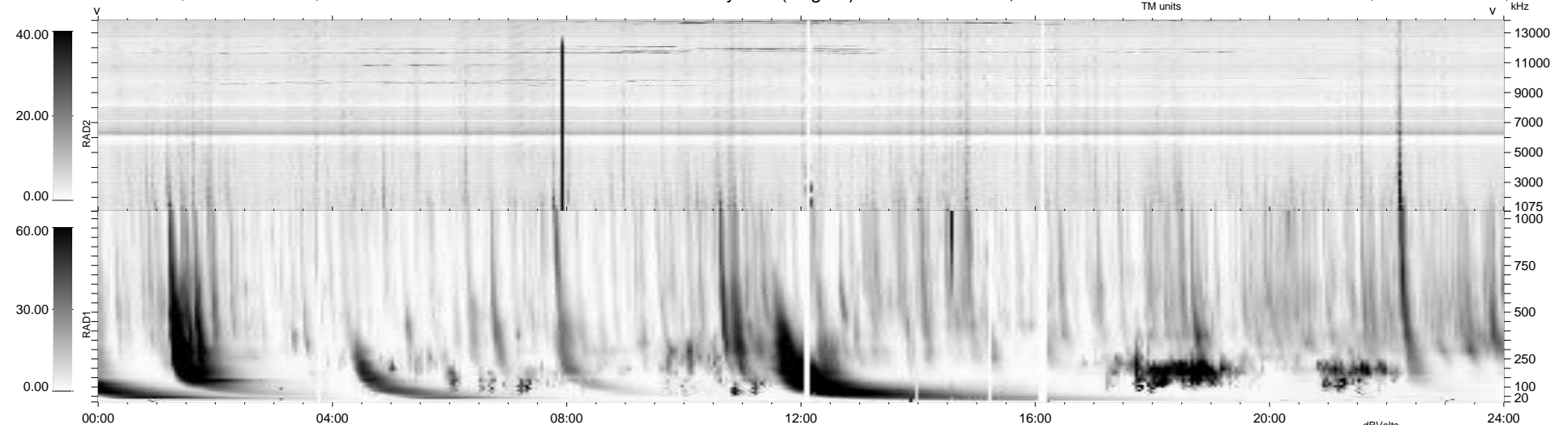
35 bad + 904 good MF/939MF projected (96%) - 0 missing MFs
 Avg interval = 180 secs
 Re = 238.60 (217.37, 98.20, -6.29 GSE)

windlib 2.0b

LZ version = v01

WIND/WAVES Summary Plot (Page 1) for 09-AUG-2015, DOY = 221

DAILY 2015-08-10 09:52:07
 Re = 239.90 (218.45, 99.00, -5.80 GSE)



RAD2
 Antenna Ey
 Mode LIN(1)
 SUM/SEP SEP
 Toggle OFF
 RAD1
 Antenna Ex
 Mode LIS(2,4)
 SUM/SEP SUM
 Toggle OFF
 TNR
 Antenna ExEy
 Mode A-32
 Sweep ACE