

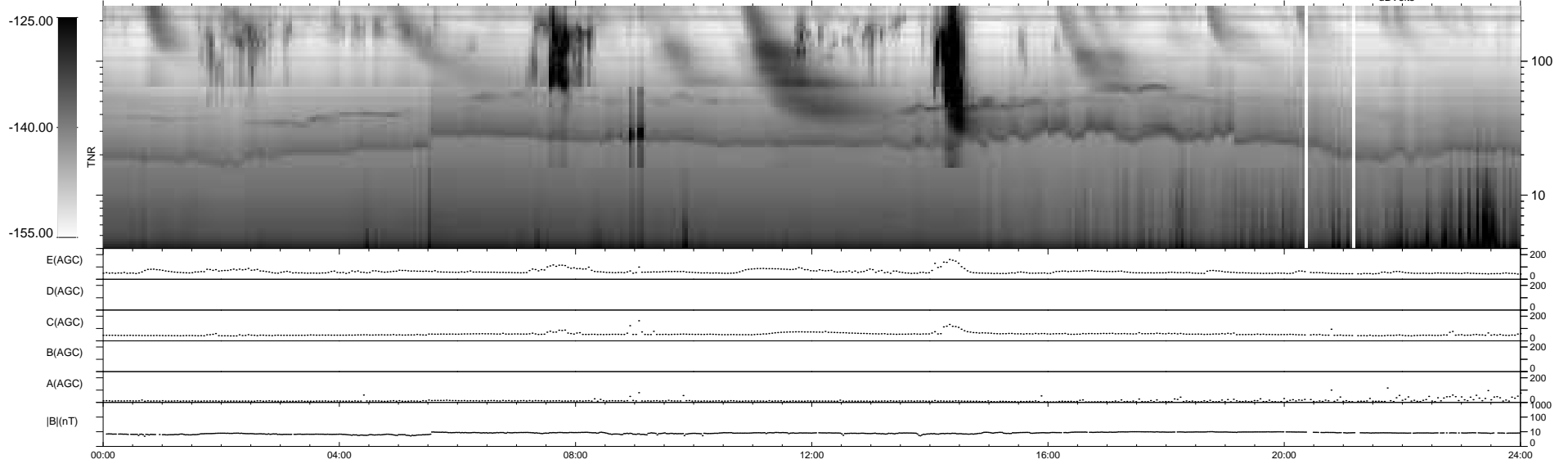
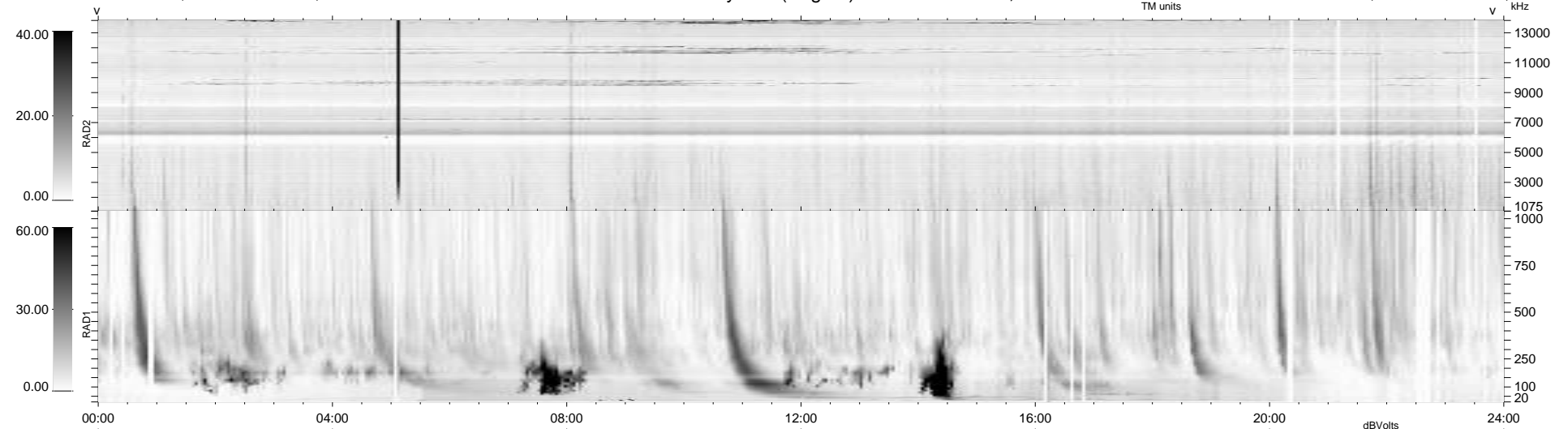
32 bad + 907 good MF/939MF projected (96%) - 0 missing MFs  
 Avg interval = 180 secs  
 Re = - 235.93 (215.24, 96.33, -7.23 GSE)

windlib 2.0b

LZ version = v01

### WIND/WAVES Summary Plot (Page 1) for 07-AUG-2015, DOY = 219

DAILY 2015-08-08 07:52:06  
 Re = 237.26 (216.29, 97.30, -6.77 GSE)



```

RAD2
Antenna Ey .....
Mode LIN(1) .....
SUM/SEP SEP .....
Toggle OFF .....

RAD1
Antenna Ex .....
Mode LIS(2,4) .....
SUM/SEP SUM .....
Toggle OFF .....

TNR
Antenna ExEy .....
Mode A-32 .....
Sweep ACE .....
  
```