

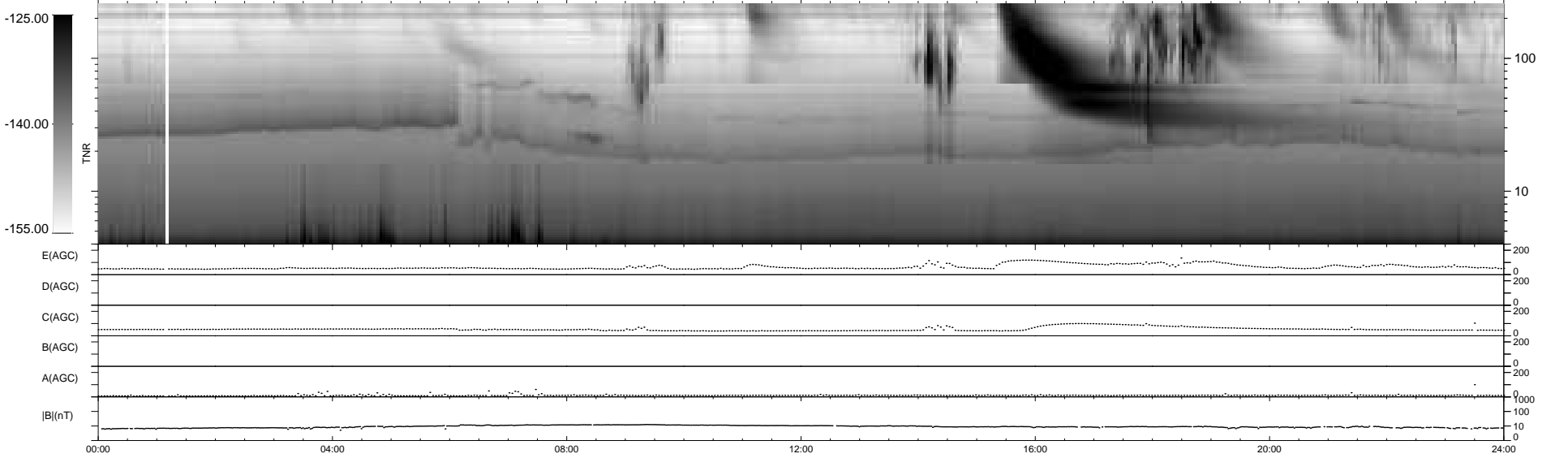
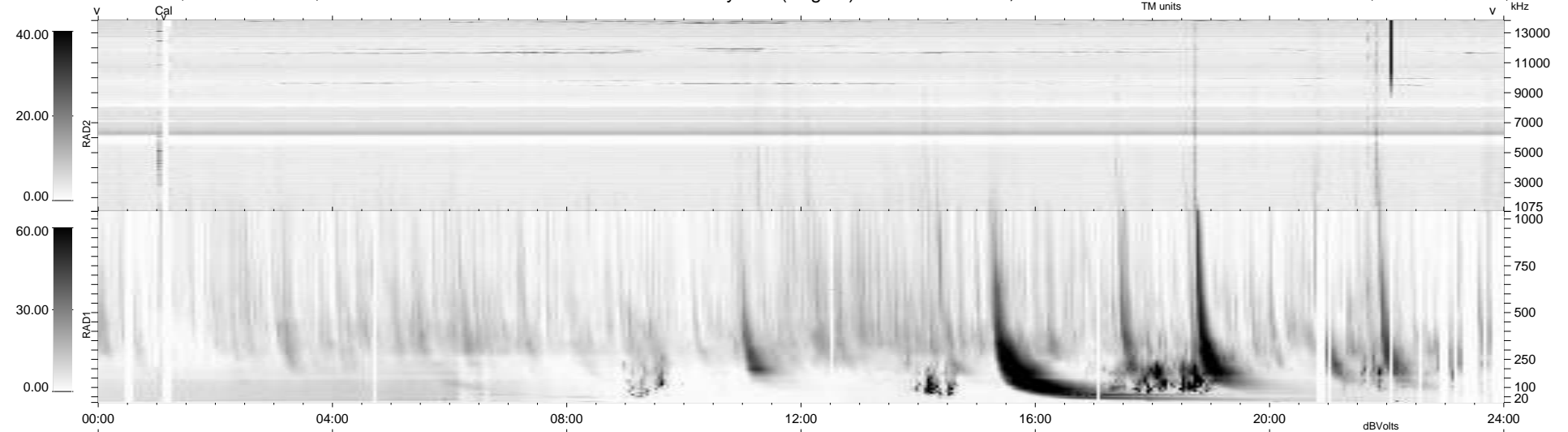
33 bad + 906 good MF/939MF projected (96%) - 0 missing MFs
 Avg interval = 180 secs
 Re = 234.58 (214.22, 95.27, -7.68 GSE)

windlib 2.0b

LZ version = v01

WIND/WAVES Summary Plot (Page 1) for 06-AUG-2015, DOY = 218

DAILY 2015-08-07 10:52:04
 Re = 235.92 (215.23, 96.32, -7.23 GSE)



```

RAD2
Antenna Ey .....
Mode LIN(1) .....
SUM/SEP SEP .....
Toggle OFF .....

RAD1
Antenna Ex .....
Mode LIS(2,4) .....
SUM/SEP SUM .....
Toggle OFF .....

TNR
Antenna ExEy .....
Mode A-32 .....
Sweep ACE .....
  
```