

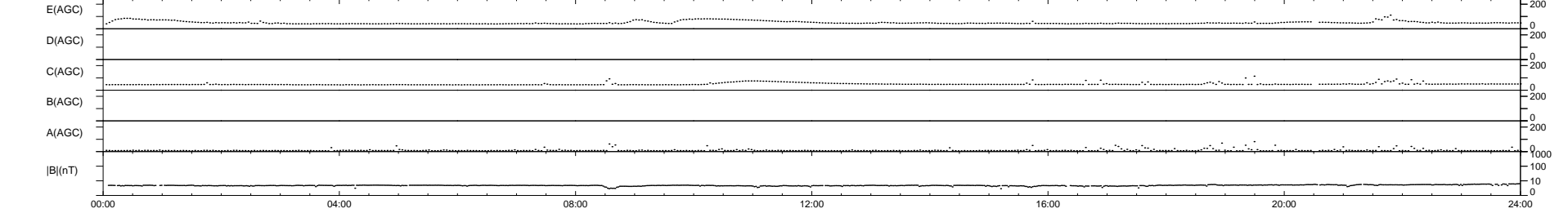
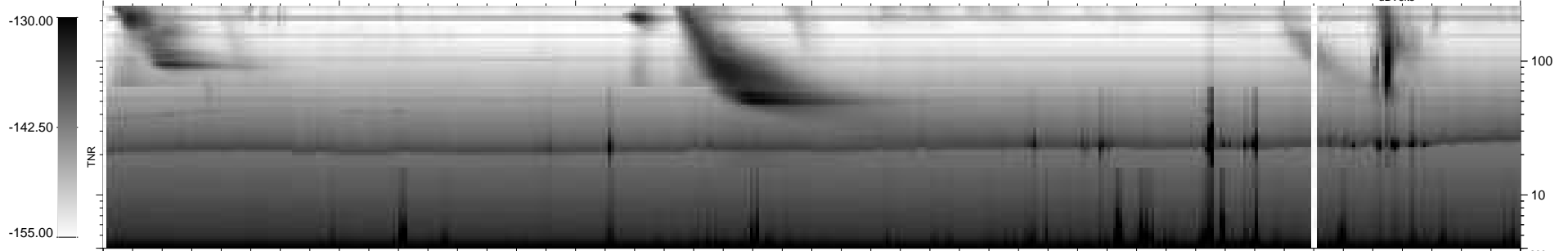
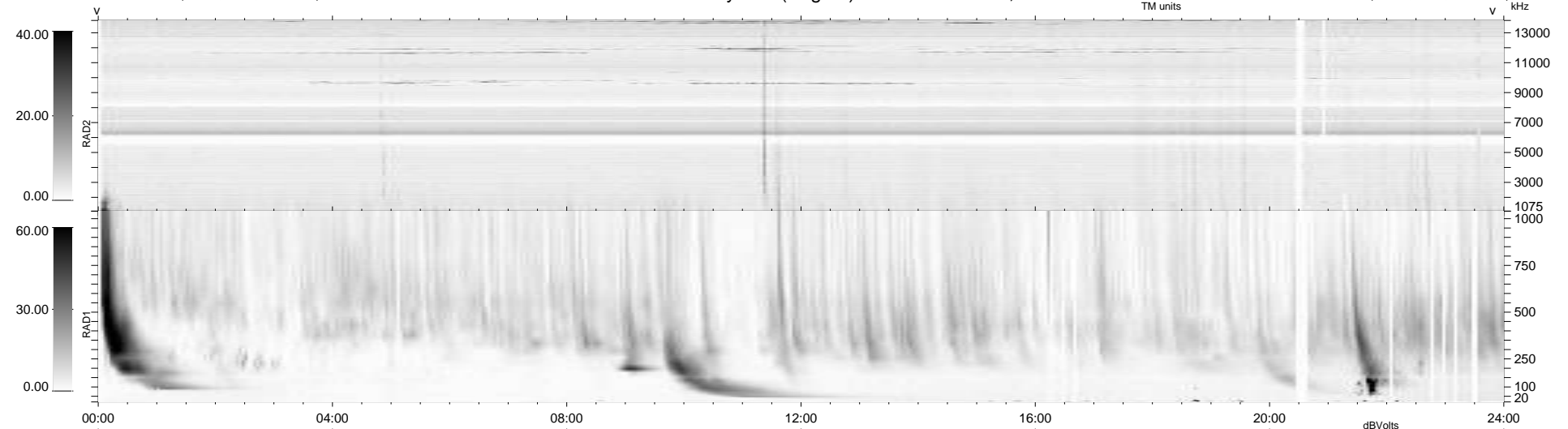
33 bad + 906 good MF/939MF projected (96%) - 0 missing MFs
Avg interval = 180 secs
Re = 233.23 (213.23, 94.13, -8.13 GSE)

windlib 2.0b

LZ version = v01

WIND/WAVES Summary Plot (Page 1) for 05-AUG-2015, DOY = 217

DAILY 2015-08-06 17:52:05
Re = 234.57 (214.21, 95.27, -7.69 GSE)



RAD2 Antenna Mode SUM/SEP Toggle
RAD1 Antenna Mode SUM/SEP Toggle
TNR Antenna Mode Sweep