

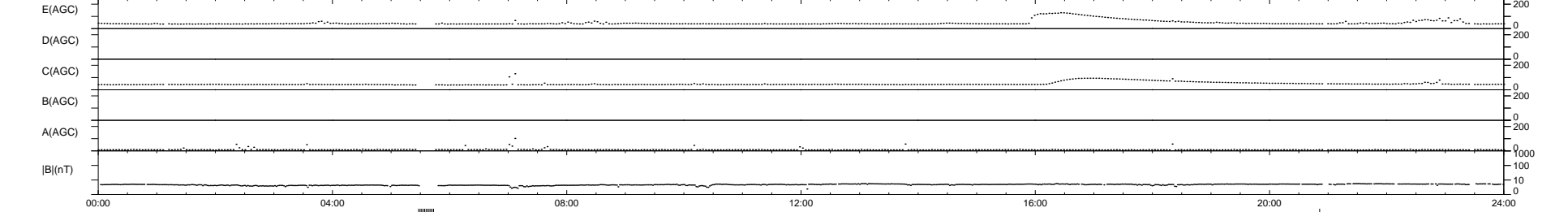
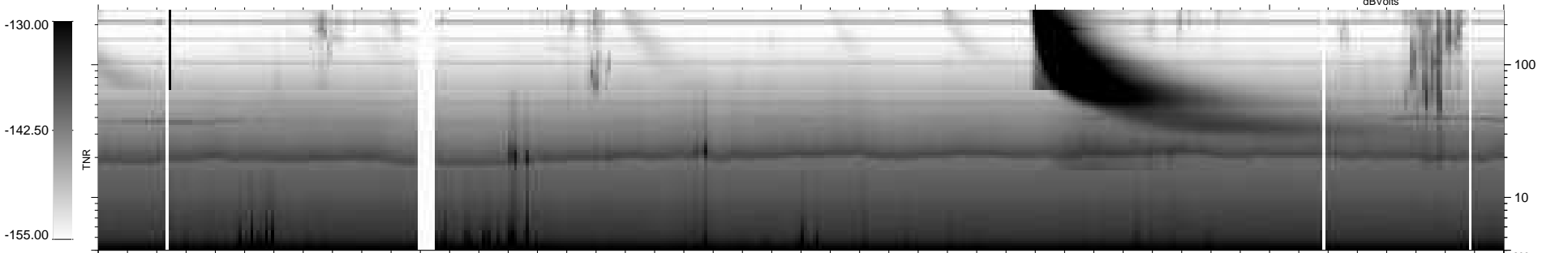
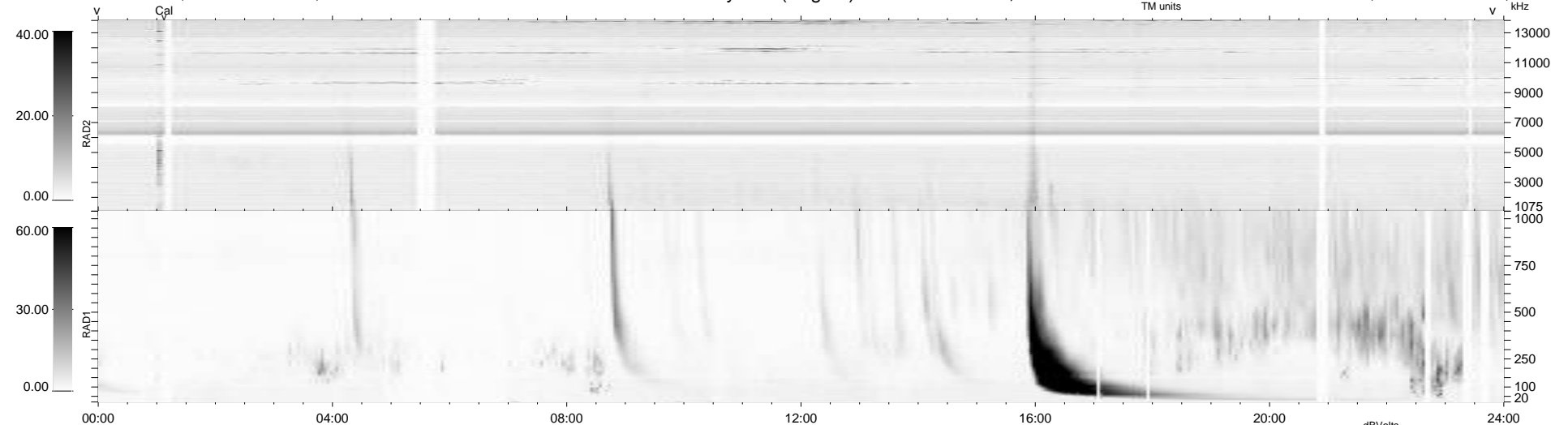
28 bad + 900 good MF/940MF projected (95%) - 12 missing MFs  
 Avg interval = 180 secs  
 Re = 231.90 (212.30, 92.91, -8.56 GSE)

windlib 2.0b

LZ version = v02

### WIND/WAVES Summary Plot (Page 1) for 04-AUG-2015, DOY = 216

DAILY 2015-08-06 13:52:07  
 Re = 233.22 (213.23, 94.13, -8.13 GSE)



RAD2  
 Antenna Ey  
 Mode LIN(1)  
 SUM/SEP SEP  
 Toggle OFF

RAD1  
 Antenna Ex  
 Mode LIS(2,4)  
 SUM/SEP SUM  
 Toggle OFF

TNR  
 Antenna ExEy  
 Mode A-32  
 Sweep ACE