

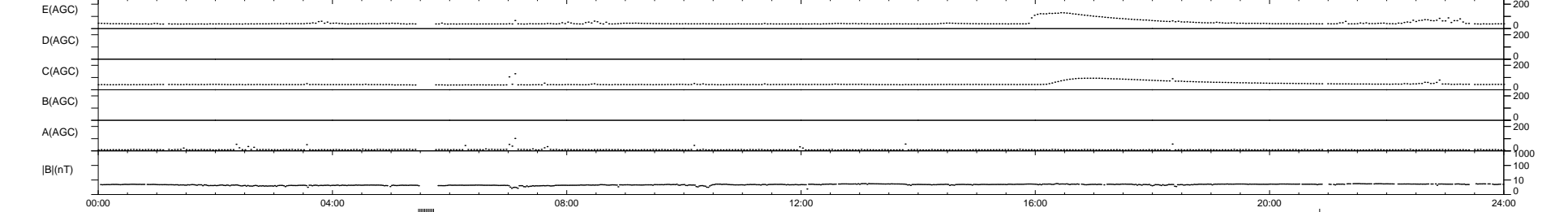
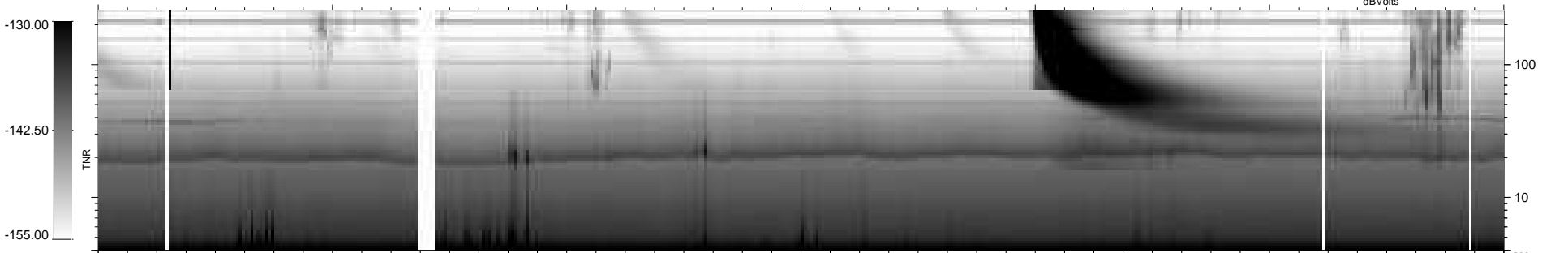
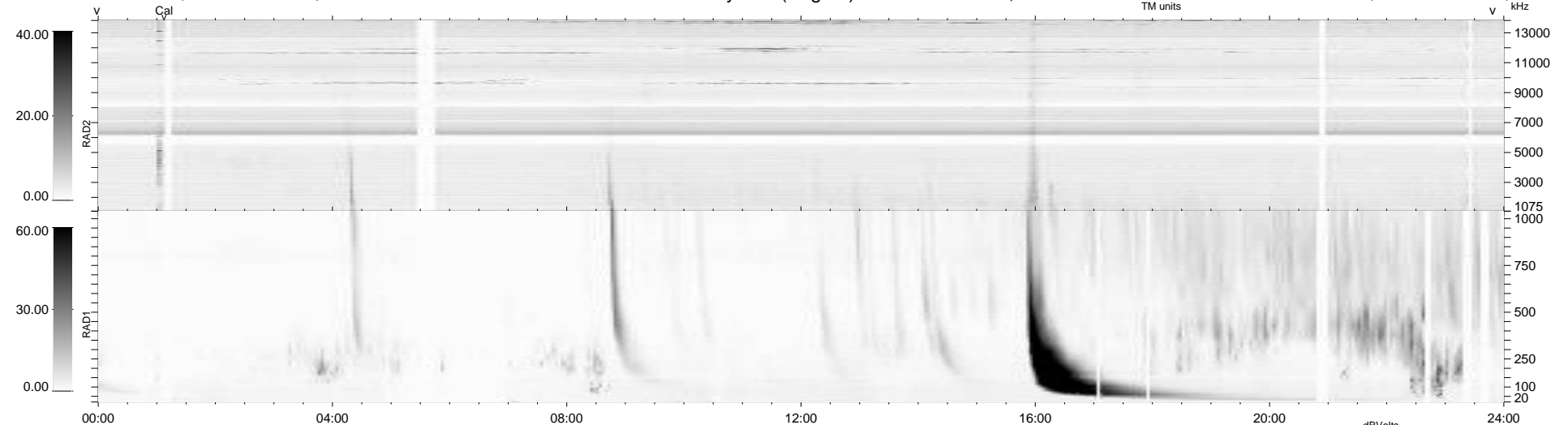
28 bad + 900 good MF/940MF projected (95%) - 12 missing MFs
 Avg interval = 180 secs
 Re = 231.90 (212.30, 92.91, -8.56 GSE)

windlib 2.0b

LZ version = v01

WIND/WAVES Summary Plot (Page 1) for 04-AUG-2015, DOY = 216

DAILY 2015-08-05 10:52:04
 Re = 233.22 (213.23, 94.13, -8.13 GSE)



RAD2
 Antenna Ey
 Mode LIN(1)
 SUM/SEP SEP
 Toggle OFF

RAD1
 Antenna Ex
 Mode LIS(2,4)
 SUM/SEP SUM
 Toggle OFF

TNR
 Antenna ExEy
 Mode A-32
 Sweep ACE