

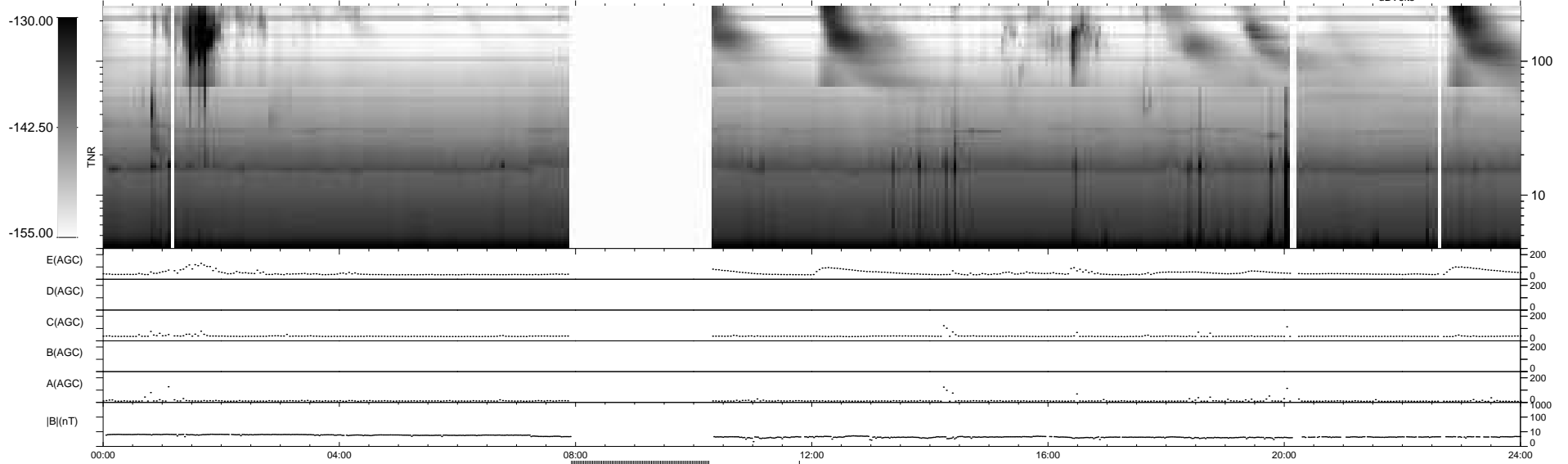
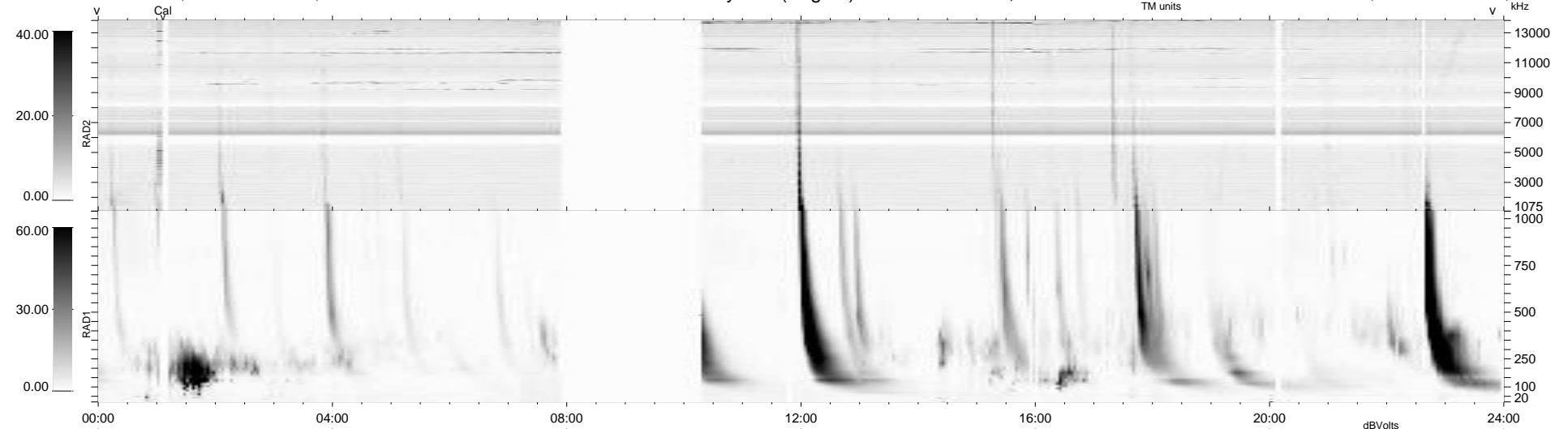
33 bad + 813 good MF/939MF projected (86%) - 93 missing MFs  
 Avg interval = 180 secs  
 Re = 229.29 (210.60, 90.21, -9.40 GSE)

windlib 2.0b

LZ version = v01

### WIND/WAVES Summary Plot (Page 1) for 02-AUG-2015, DOY = 214

DAILY 2015-08-03 10:52:03  
 Re = 230.57 (211.41, 91.60, -8.99 GSE)



RAD2  
 Antenna Ey .....  
 Mode LIN(1) .....  
 SUM/SEP SEP .....  
 Toggle OFF .....  
 RAD1  
 Antenna Ex .....  
 Mode LIS(2,4) .....  
 SUM/SEP SUM .....  
 Toggle OFF .....  
 TNR  
 Antenna ExEy .....  
 Mode A-32 .....  
 Sweep ACE .....