

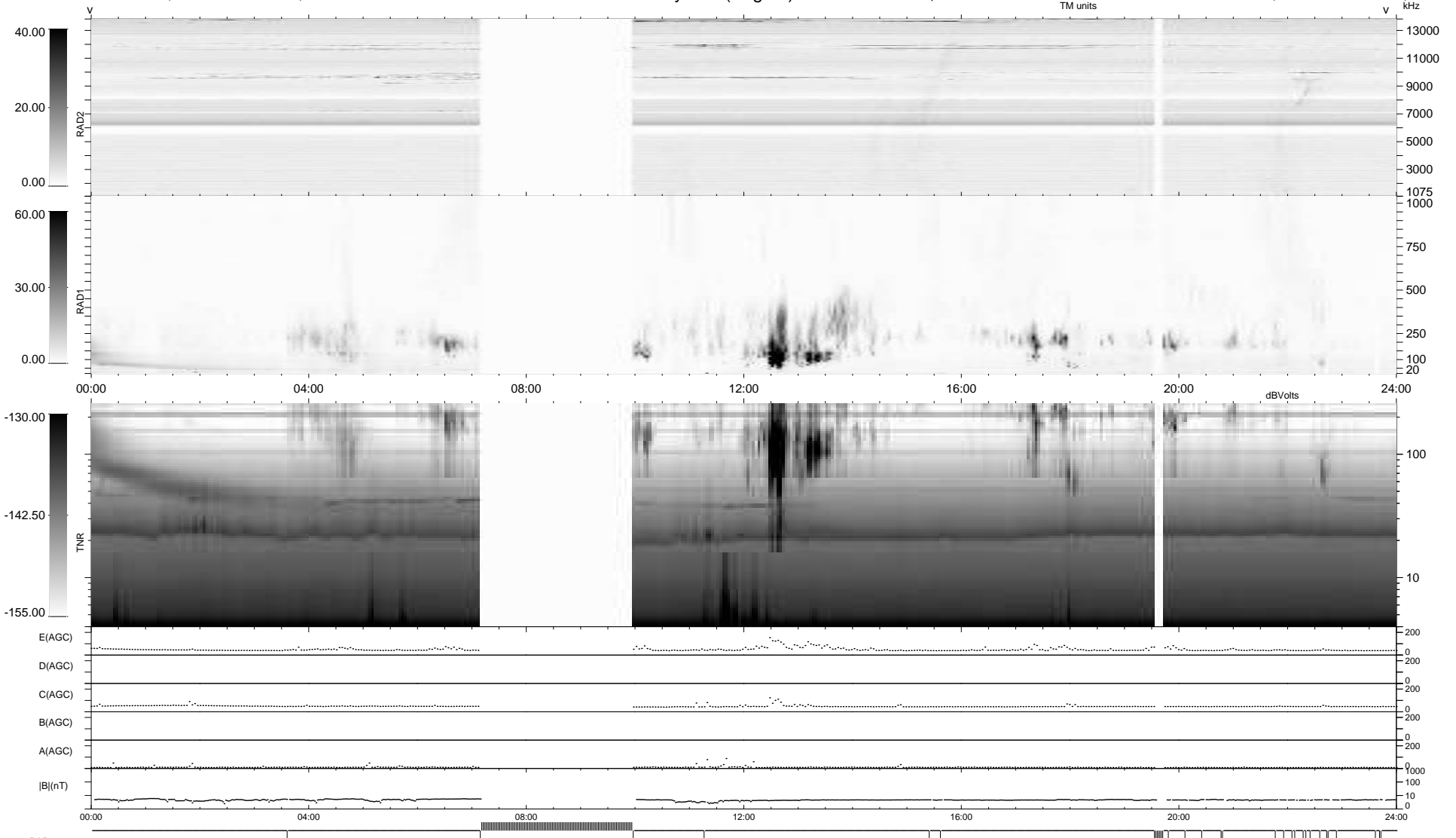
32 bad + 798 good MF/939MF projected (84%) - 109 missing MFs
 Avg interval = 180 secs
 Re = 223.25 (207.50, 81.58, -11.32 GSE)

windlib 2.0b

LZ version = v01

WIND/WAVES Summary Plot (Page 1) for 28-JUL-2015, DOY = 209

DAILY 2015-07-29 10:52:04
 Re = 224.40 (207.99, 83.53, -10.95 GSE)



```

RAD2
Antenna Ey .....
Mode LIN(1) .....
SUM/SEP SEP .....
Toggle OFF .....

RAD1
Antenna Ex .....
Mode LIS(2,4) .....
SUM/SEP SUM .....
Toggle OFF .....

TNR
Antenna ExEy .....
Mode A-32 .....
Sweep ACE .....
  
```