

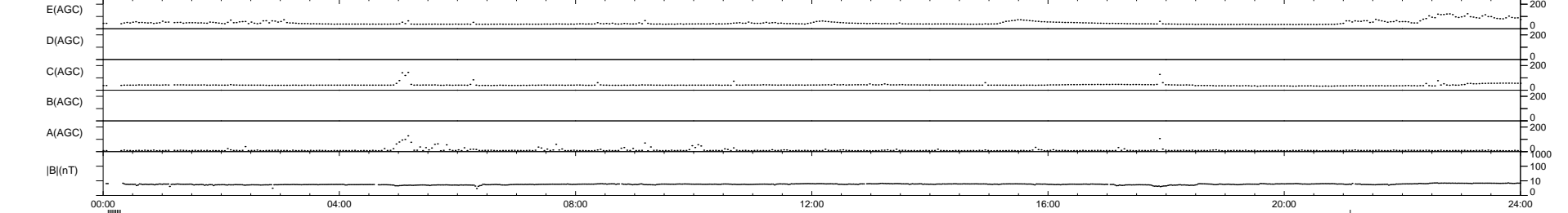
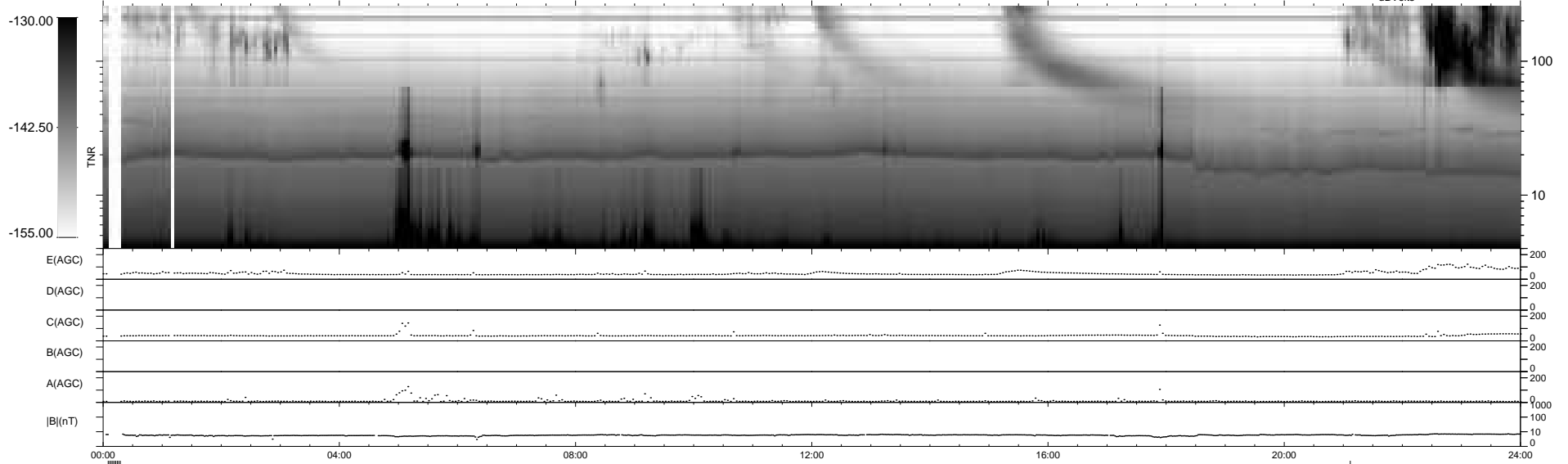
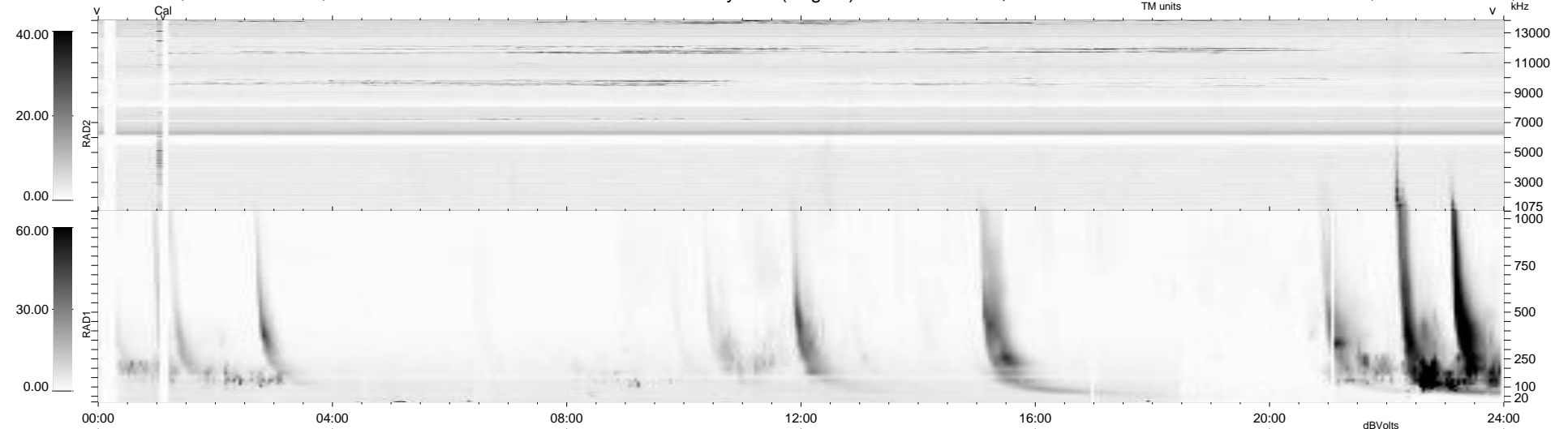
9 bad + 920 good MF/939MF projected (97%) - 10 missing MFs  
 Avg interval = 180 secs  
 Re = 219.87 (206.35, 74.90, -12.33 GSE)

windlib 2.0b

LZ version = v01

### WIND/WAVES Summary Plot (Page 1) for 25-JUL-2015, DOY = 206

DAILY 2015-07-27 00:52:05  
 Re = 220.97 (206.68, 77.24, -12.01 GSE)



RAD2  
 Antenna Ey .....  
 Mode LIN(1) .....  
 SUM/SEP SEP .....  
 Toggle OFF .....  
 RAD1  
 Antenna Ex .....  
 Mode LIS(2,4) .....  
 SUM/SEP SUM .....  
 Toggle OFF .....  
 TNR  
 Antenna ExEy .....  
 Mode A-32 .....  
 Sweep ACE .....