

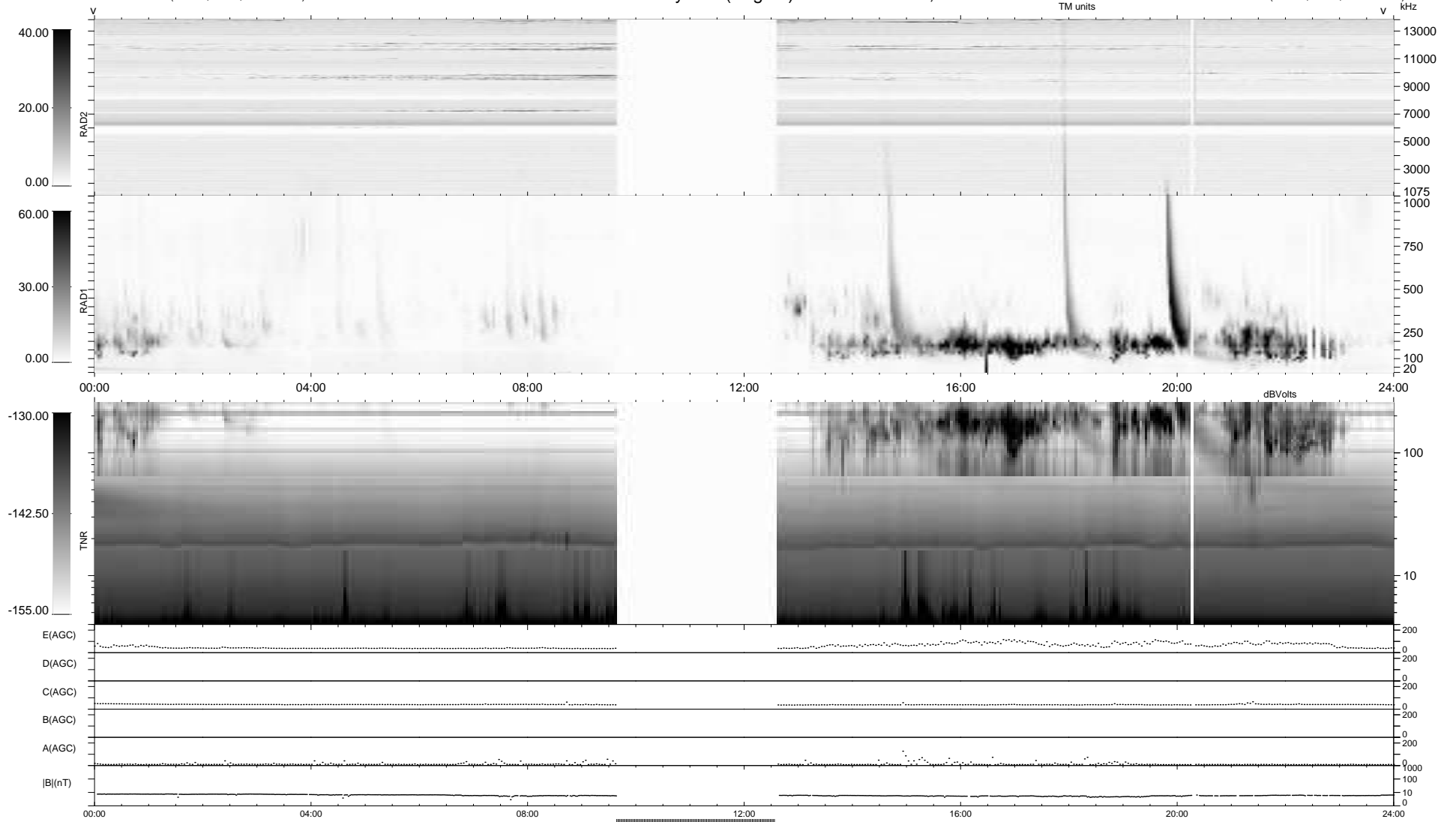
26 bad + 798 good MF/939MF projected (84%) - 115 missing MFs
 Avg interval = 180 secs
 Re = 218.76 (206.04, 72.42, -12.64 GSE)

windlib 2.0b

LZ version = v02

WIND/WAVES Summary Plot (Page 1) for 24-JUL-2015, DOY = 205

DAILY 2015-07-27 10:52:06
 Re = 219.86 (206.34, 74.89, -12.33 GSE)



RAD2	Antenna	Ey
	Mode	LIN(1)
	SUM/SEP	SEP
	Toggle	OFF
RAD1	Antenna	Ex
	Mode	LIS(2,4)
	SUM/SEP	SUM
	Toggle	OFF
TNR	Antenna	ExEy
	Mode	A-32
	Sweep	ACE