

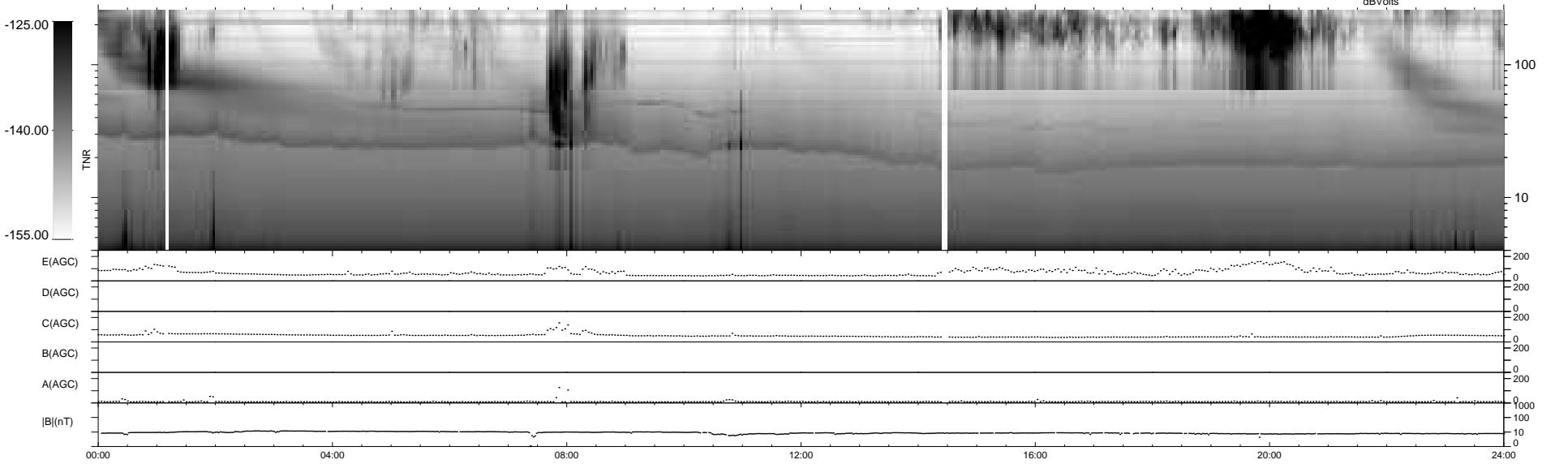
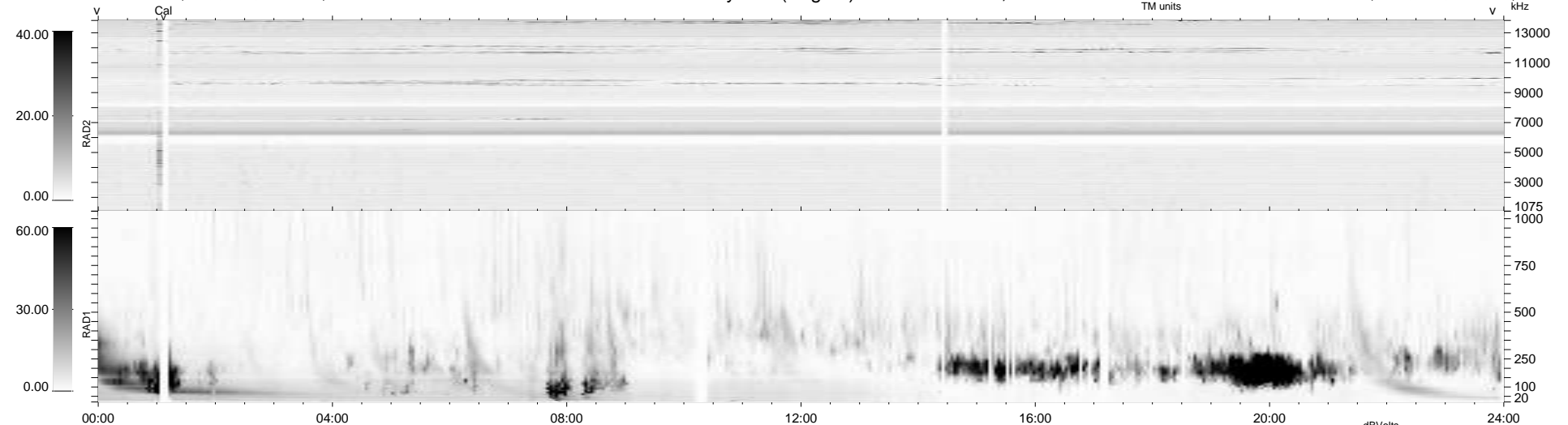
33 bad + 906 good MF/939MF projected (96%) - 0 missing MFs
 Avg interval = 180 secs
 Re = 217.67 (205.77, 69.81, -12.93 GSE)

windlib 2.0b

LZ version = v01

WIND/WAVES Summary Plot (Page 1) for 23-JUL-2015, DOY = 204

DAILY 2015-07-24 09:52:07
 Re = 218.75 (206.04, 72.40, -12.64 GSE)



```

RAD2
Antenna Ey .....
Mode LIN(1) .....
SUM/SEP SEP .....
Toggle OFF .....

RAD1
Antenna Ex .....
Mode LIS(2,4) .....
SUM/SEP SUM .....
Toggle OFF .....

TNR
Antenna ExEy .....
Mode A-32 .....
Sweep ACE .....
  
```