

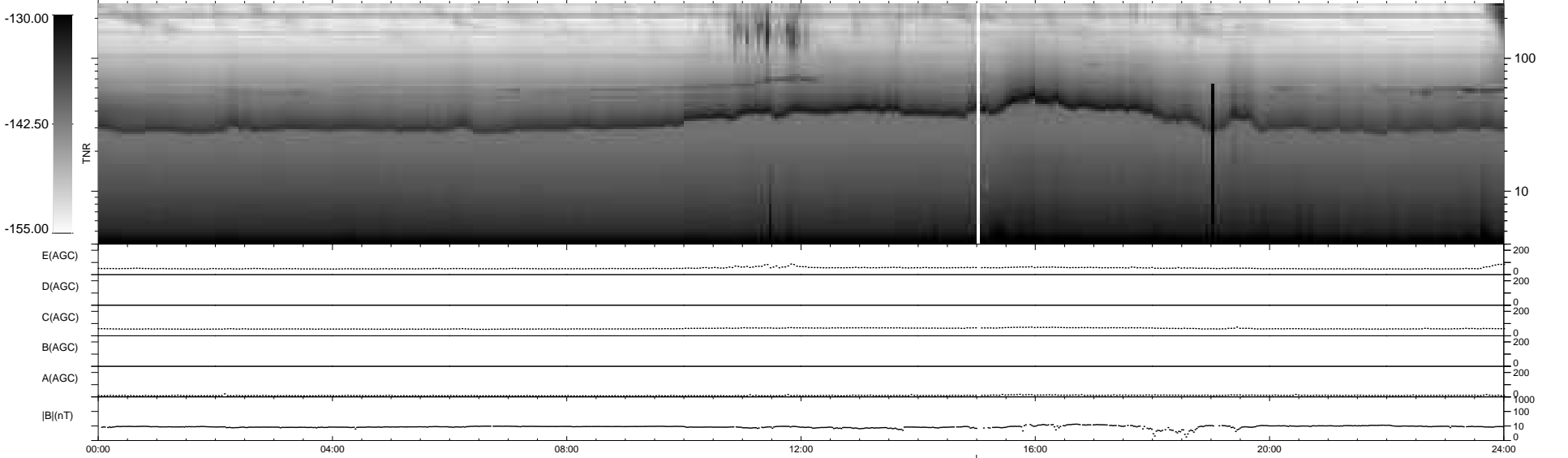
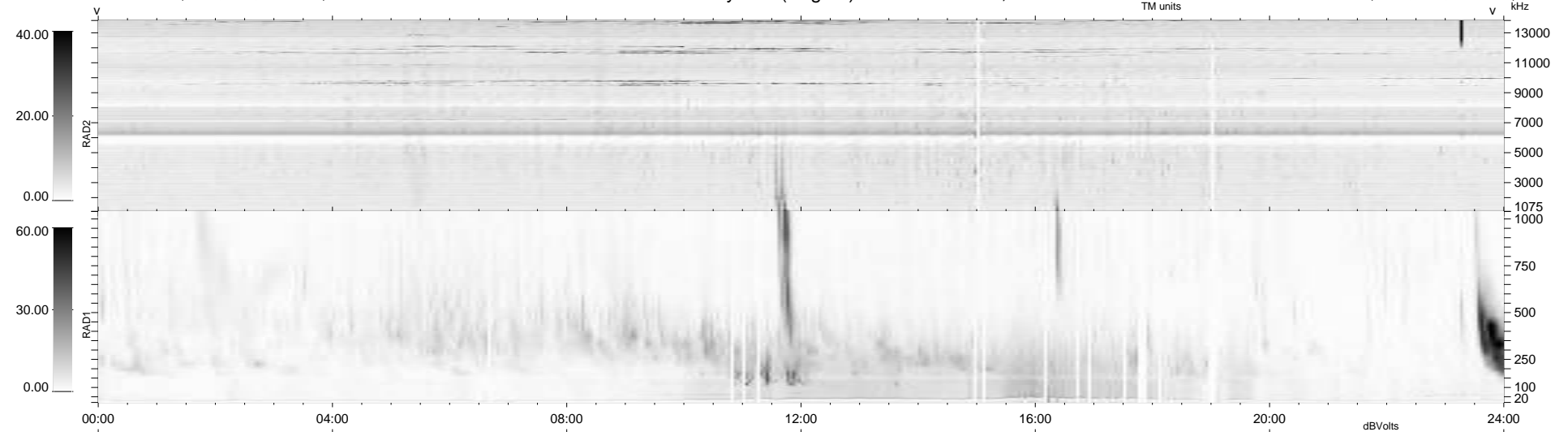
34 bad + 904 good MF/939MF projected (96%) - 1 missing MF
 Avg interval = 180 secs
 Re = 216.59 (205.52, 67.08, -13.21 GSE)

windlib 2.0b

LZ version = v01

WIND/WAVES Summary Plot (Page 1) for 22-JUL-2015, DOY = 203

DAILY 2015-07-23 11:52:04
 Re = 217.66 (205.76, 69.79, -12.93 GSE)



```

RAD2
Antenna Ey .....
Mode LIN(1) .....
SUM/SEP SEP .....
Toggle OFF .....

RAD1
Antenna Ex .....
Mode LIS(2,4) .....
SUM/SEP SUM .....
Toggle OFF .....

TNR
Antenna ExEy .....
Mode A-32 .....
Sweep ACE .....
  
```