

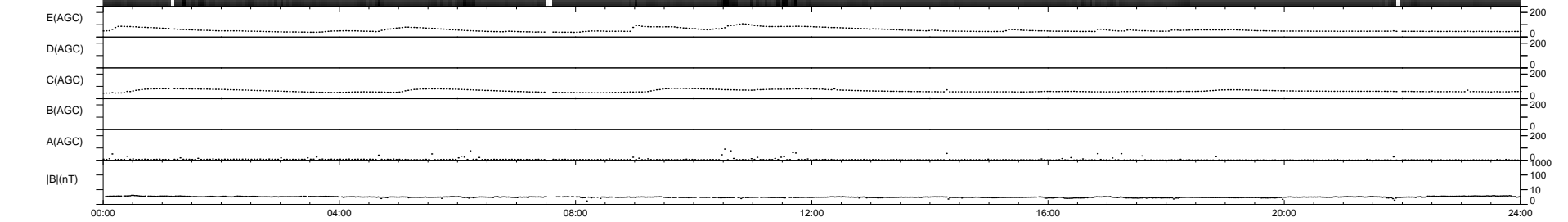
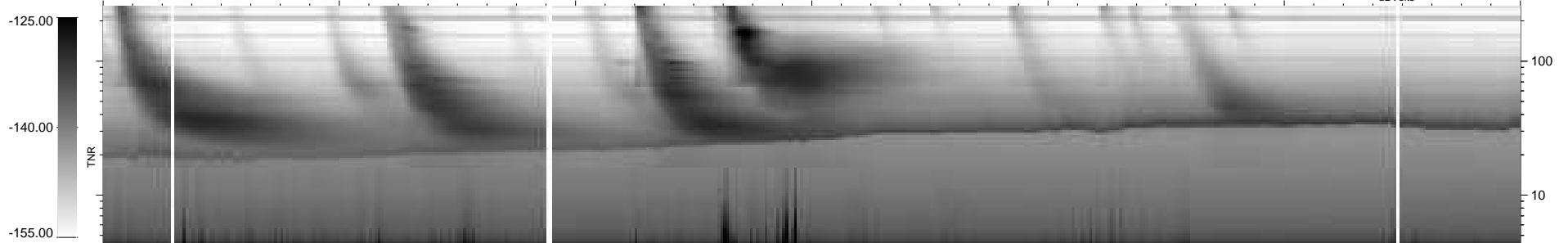
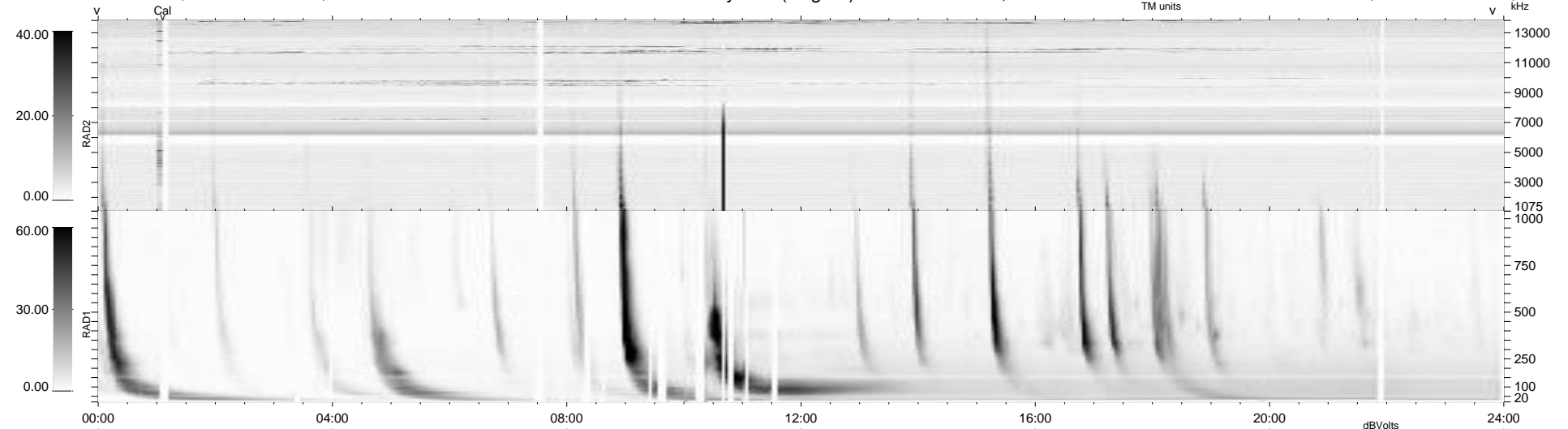
35 bad + 904 good MF/939MF projected (96%) - 0 missing MFs
 Avg interval = 180 secs
 Re = 213.40 (204.84, 58.20, -13.91 GSE)

windlib 2.0b

LZ version = v01

WIND/WAVES Summary Plot (Page 1) for 19-JUL-2015, DOY = 200

DAILY 2015-07-20 07:52:04
 Re = 214.45 (205.06, 61.25, -13.70 GSE)



```

RAD2
Antenna Ey .....
Mode LIN(1) .....
SUM/SEP SEP .....
Toggle OFF .....

RAD1
Antenna Ex .....
Mode LIS(2,4) .....
SUM/SEP SUM .....
Toggle OFF .....

TNR
Antenna ExEy .....
Mode A-32 .....
Sweep ACE .....
  
```