

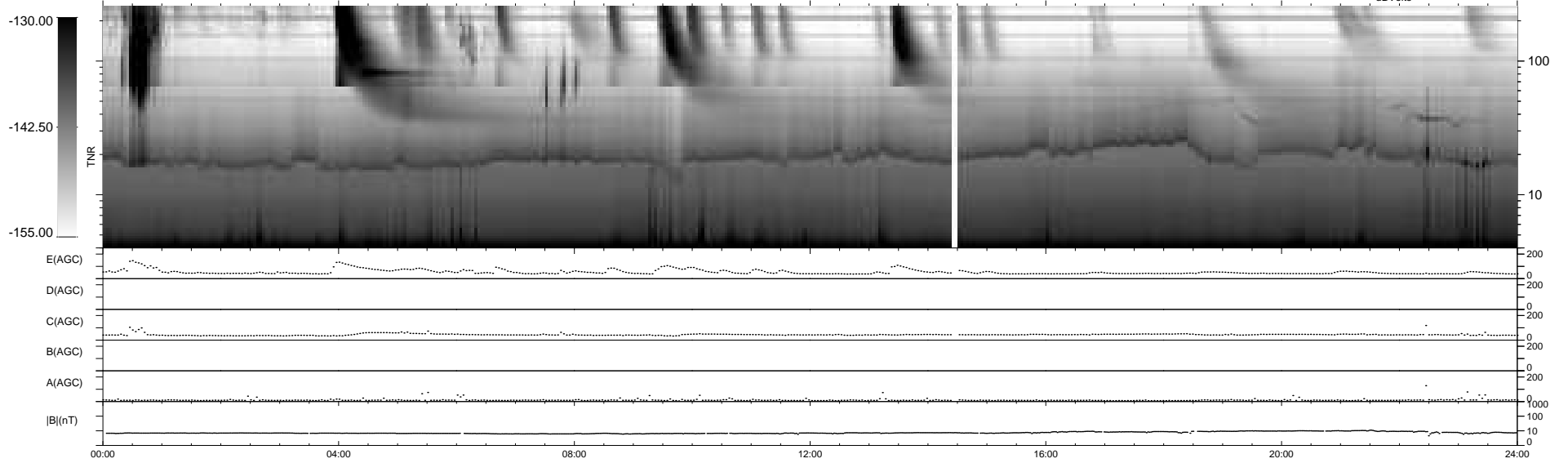
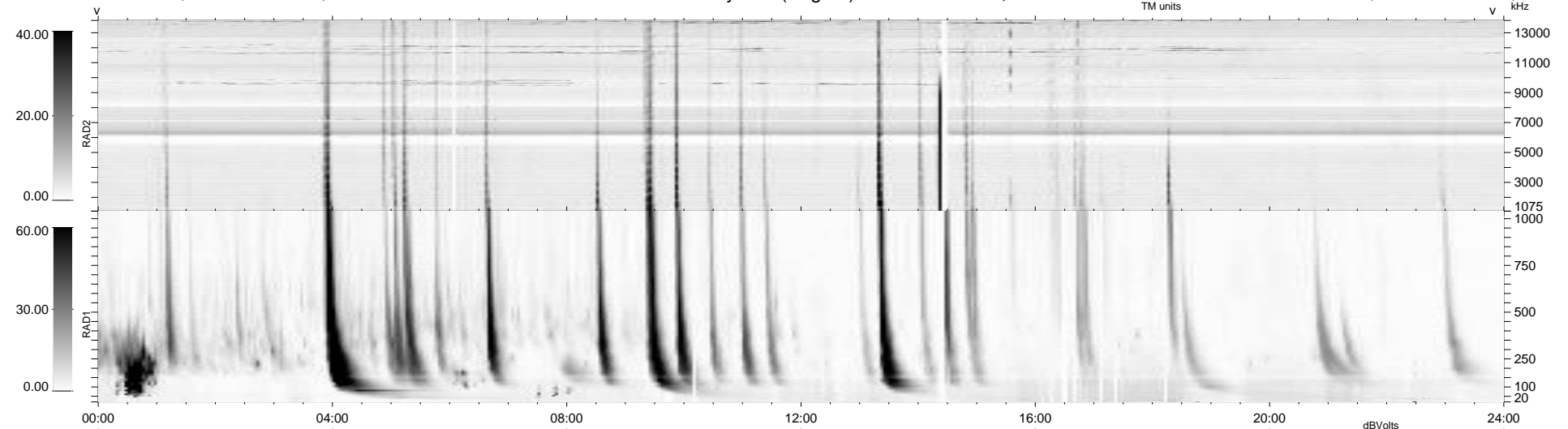
34 bad + 905 good MF/939MF projected (96%) - 0 missing MFs
 Avg interval = 180 secs
 Re = 208.41 (203.69, 41.60, -14.63 GSE)

windlib 2.0b

LZ version = v02

WIND/WAVES Summary Plot (Page 1) for 14-JUL-2015, DOY = 195

DAILY 2015-07-15 11:52:04
 Re = 209.36 (203.94, 45.03, -14.54 GSE)



RAD2
 Antenna Ey
 Mode LIN(1)
 SUM/SEP SEP
 Toggle OFF
 RAD1
 Antenna Ex
 Mode LIS(2,4)
 SUM/SEP SUM
 Toggle OFF
 TNR
 Antenna ExEy
 Mode A-32
 Sweep ACE