

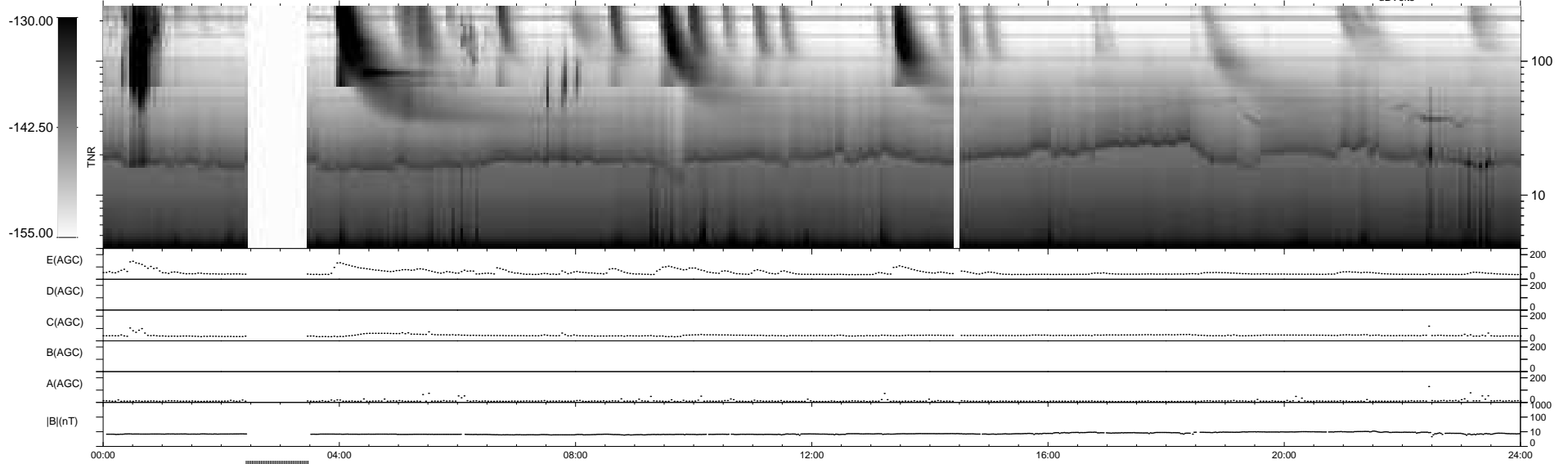
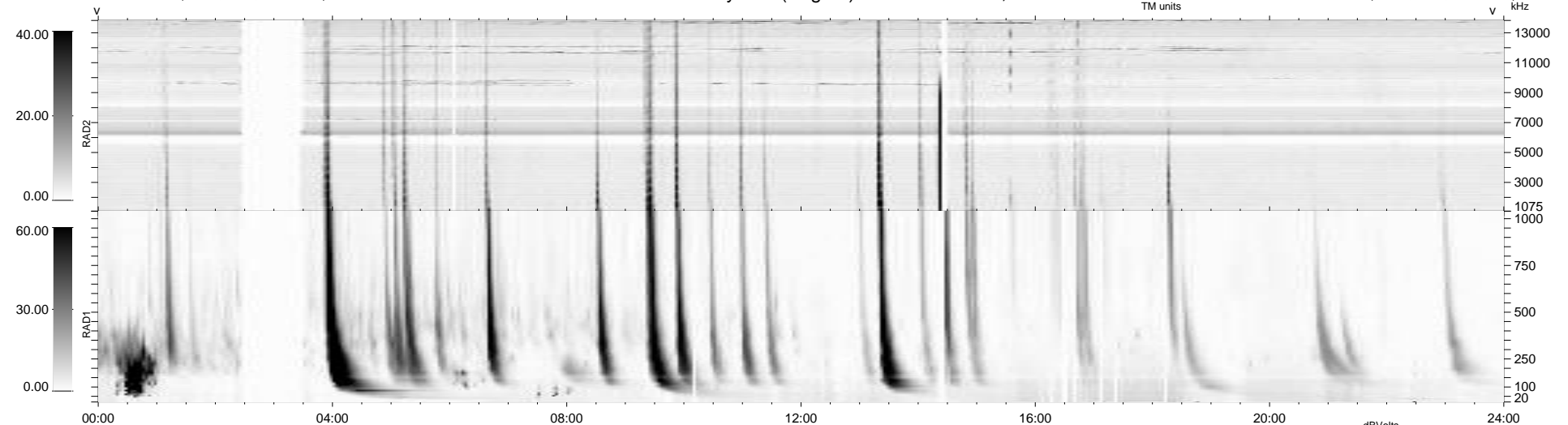
34 bad + 863 good MF/939MF projected (91%) - 42 missing MFs
Avg interval = 180 secs
Re = 208.41 (203.69, 41.60, -14.63 GSE)

windlib 2.0b

LZ version = v01

WIND/WAVES Summary Plot (Page 1) for 14-JUL-2015, DOY = 195

DAILY 2015-07-15 04:52:04
Re = 209.36 (203.94, 45.03, -14.54 GSE)



RAD2
Antenna Ey
Mode LIN(1)
SUM/SEP SEP
Toggle OFF

RAD1
Antenna Ex
Mode LIS(2/4)
SUM/SEP SUM
Toggle OFF

TNR
Antenna ExEy
Mode A-32
Sweep ACE