

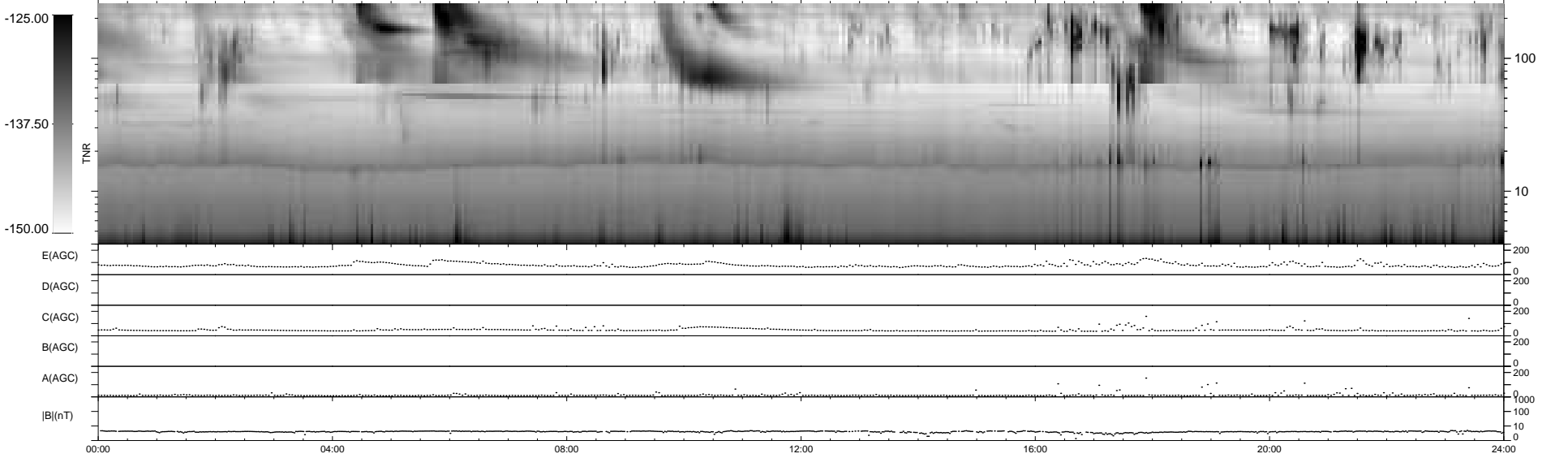
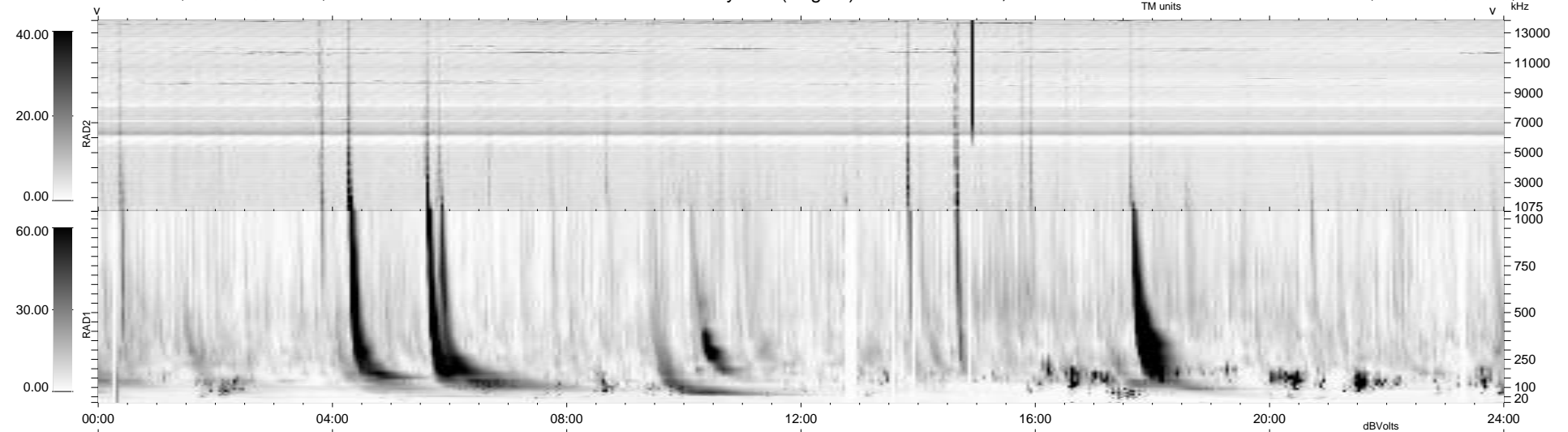
36 bad + 904 good MF/940MF projected (96%) - 0 missing MFs  
 Avg interval = 180 secs  
 Re = -206.62 (203.18, 34.54, -14.74 GSE)

windlib 2.0b

LZ version = v01

### WIND/WAVES Summary Plot (Page 1) for 12-JUL-2015, DOY = 193

DAILY 2015-07-14 10:52:05  
 Re = 207.49 (203.44, 38.06, -14.70 GSE)



RAD2 Antenna Ey .....  
 Mode LIN(1) .....  
 SUM/SEP SEP .....  
 Toggle OFF .....  
 RAD1 Antenna Ex .....  
 Mode LIS(2,4) .....  
 SUM/SEP SUM .....  
 Toggle OFF .....  
 TNR Antenna ExEy .....  
 Mode A-32 .....  
 Sweep ACE .....