

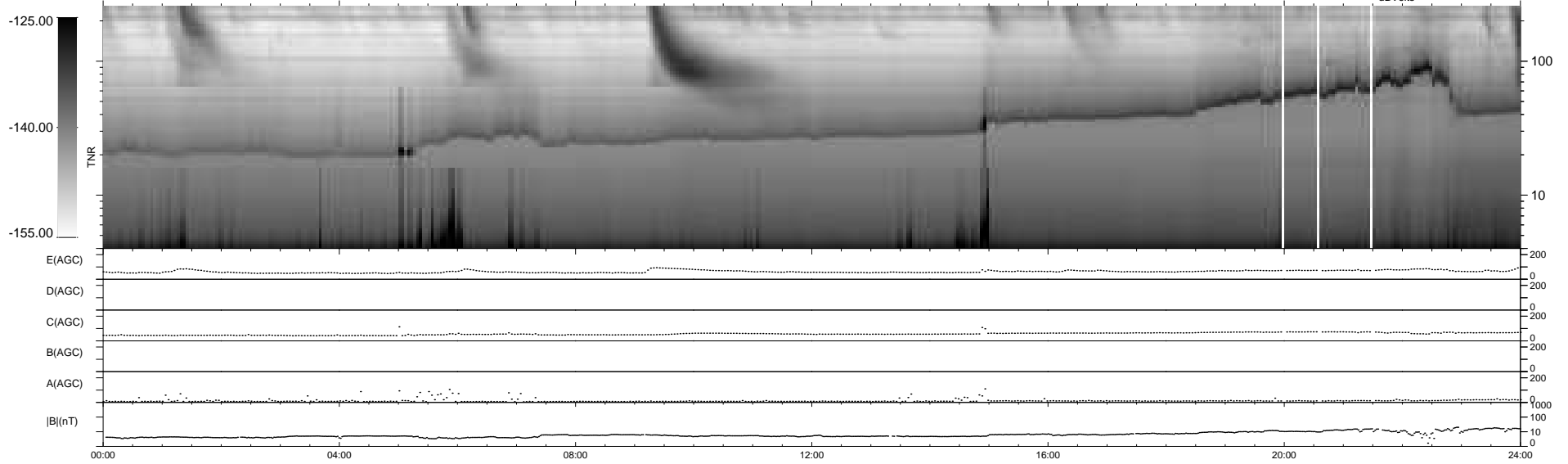
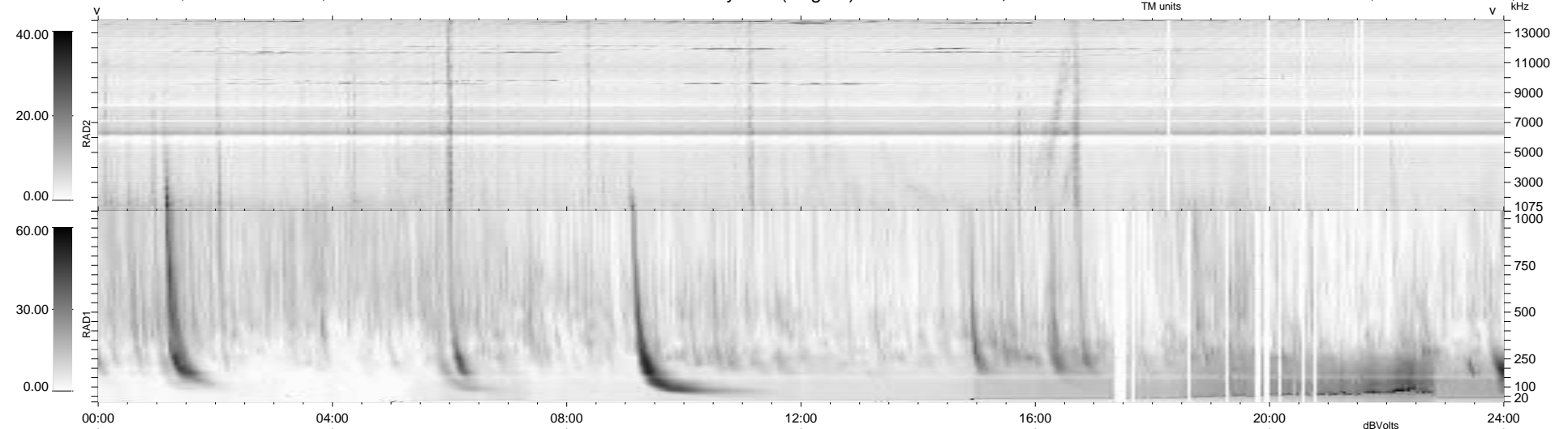
36 bad + 903 good MF/939MF projected (96%) - 0 missing MFs  
 Avg interval = 180 secs  
 Re = - 205.02 (202.65, 27.38, -14.74 GSE)

windlib 2.0b

LZ version = v01

### WIND/WAVES Summary Plot (Page 1) for 10-JUL-2015, DOY = 191

DAILY 2015-07-11 16:52:04  
 Re = 205.79 (202.91, 30.95, -14.75 GSE)



RAD2  
 Antenna Ey .....  
 Mode LIN(1) .....  
 SUM/SEP SEP .....  
 Toggle OFF .....  
 RAD1  
 Antenna Ex .....  
 Mode LIS(2,4) .....  
 SUM/SEP SUM .....  
 Toggle OFF .....  
 TNR  
 Antenna ExEy .....  
 Mode A-32 .....  
 Sweep ACE .....