

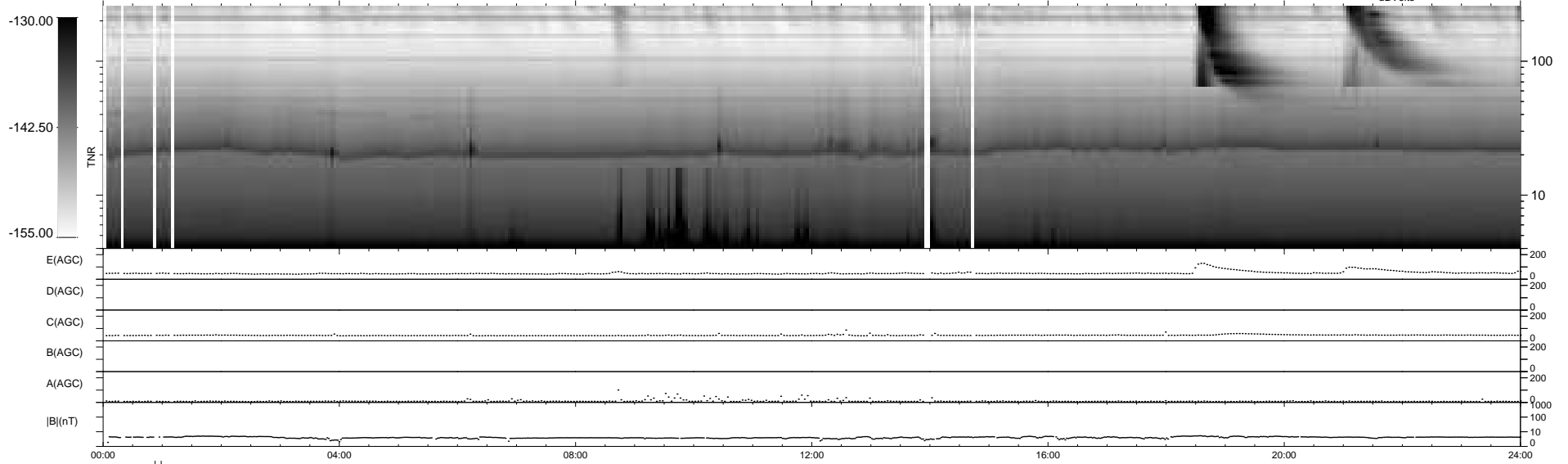
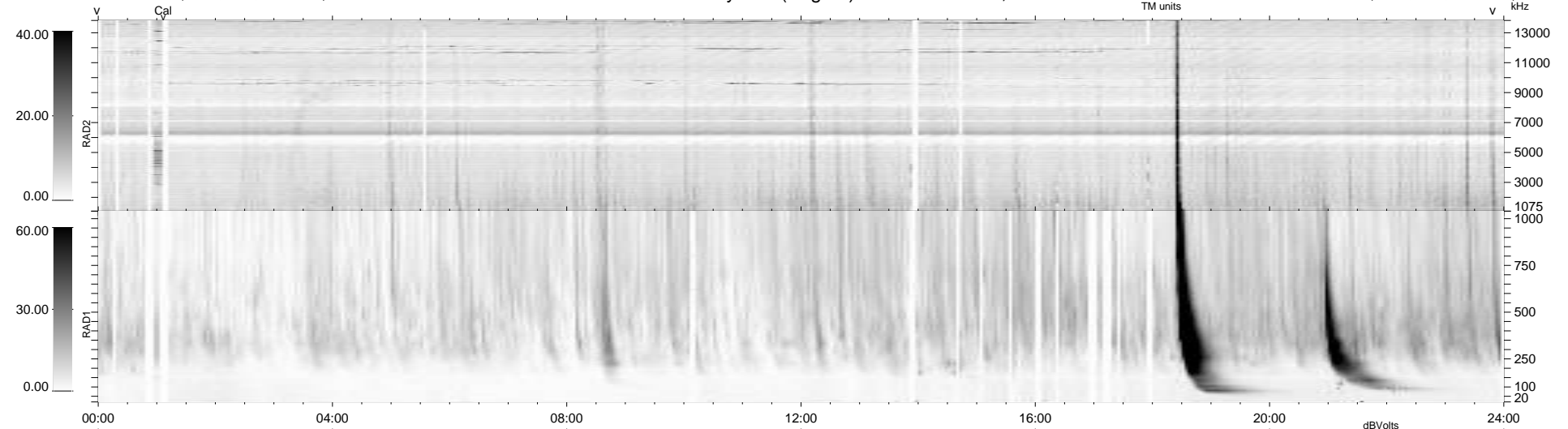
47 bad + 890 good MF/939MF projected (94%) - 2 missing MFs
Avg interval = 180 secs
Re = 204.32 (202.40, 23.79, -14.70 GSE)

windlib 2.0b

LZ version = v01

WIND/WAVES Summary Plot (Page 1) for 09-JUL-2015, DOY = 190

DAILY 2015-07-10 07:52:53
Re = 205.02 (202.65, 27.36, -14.74 GSE)



RAD2
Antenna
Mode
SUM/SEP
Toggle
RAD1
Antenna Ex
Mode LIS(2/4)
SUM/SEP SUM
Toggle OFF
TNR
Antenna
Mode
Sweep