

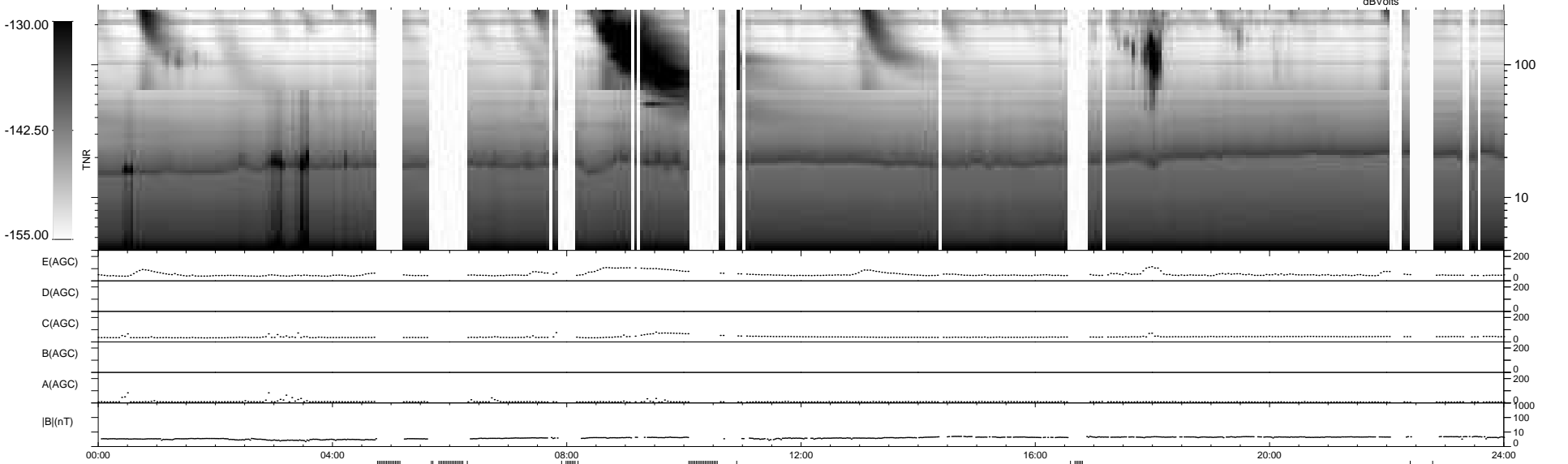
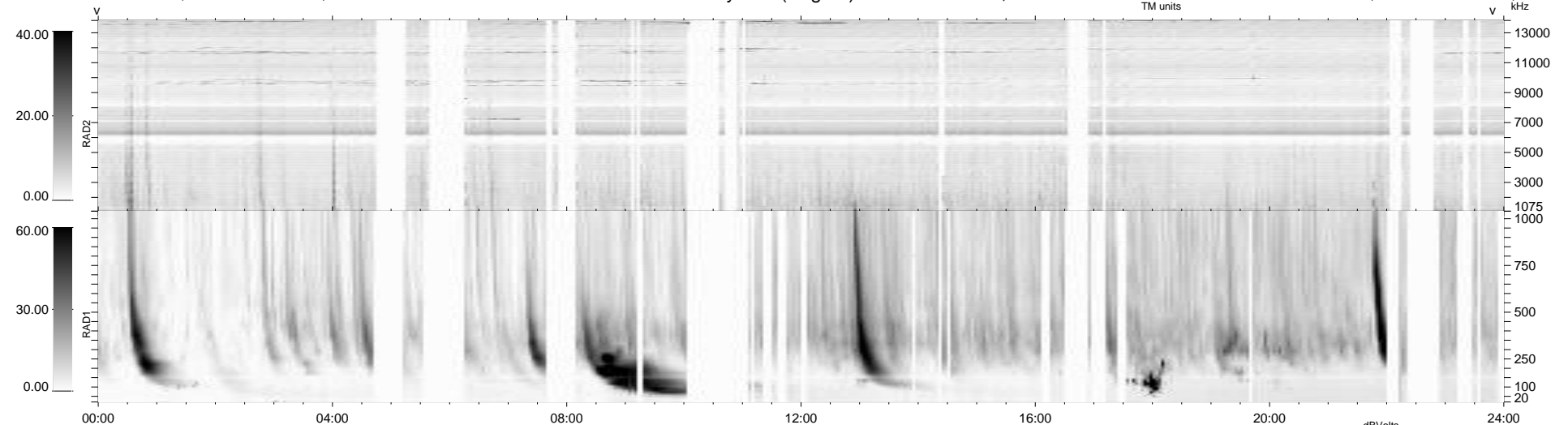
146 bad + 718 good MF/939MF projected (76%) - 75 missing MFs
Avg interval = 180 secs
Re = 203.69 (202.16, 20.19, -14.63 GSE)

windlib 2.0b

LZ version = v01

WIND/WAVES Summary Plot (Page 1) for 08-JUL-2015, DOY = 189

DAILY 2015-07-10 07:52:03
Re = 204.32 (202.40, 23.76, -14.70 GSE)



RAD2
Antenna Ey
Mode LIN(1)
SUM/SEP SEP
Toggle OFF

RAD1
Antenna Ex
Mode LIS(2,4)
SUM/SEP SUM
Toggle OFF

TNR
Antenna ExEy
Mode A-32
Sweep ACE