

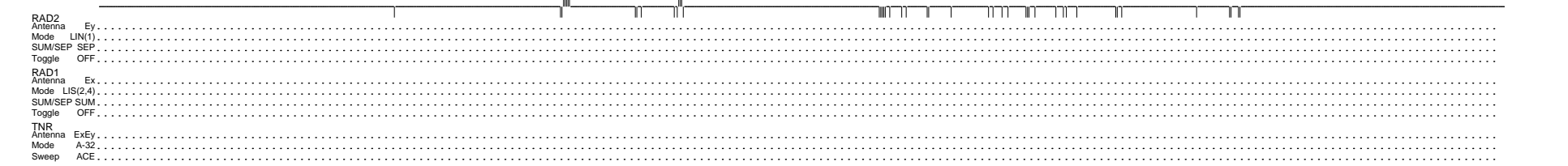
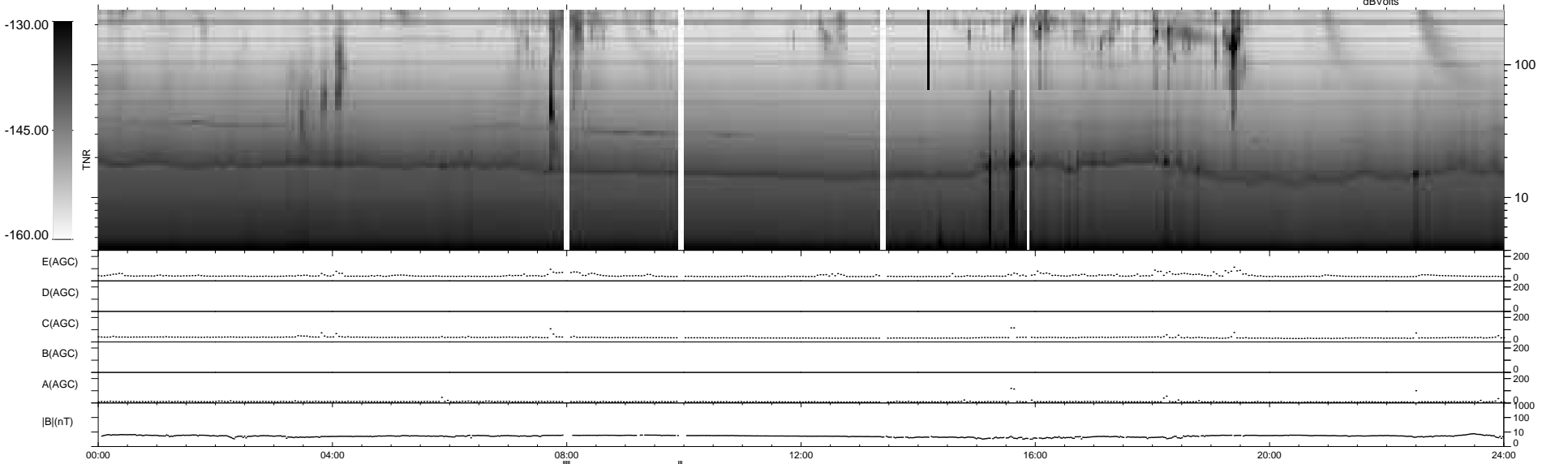
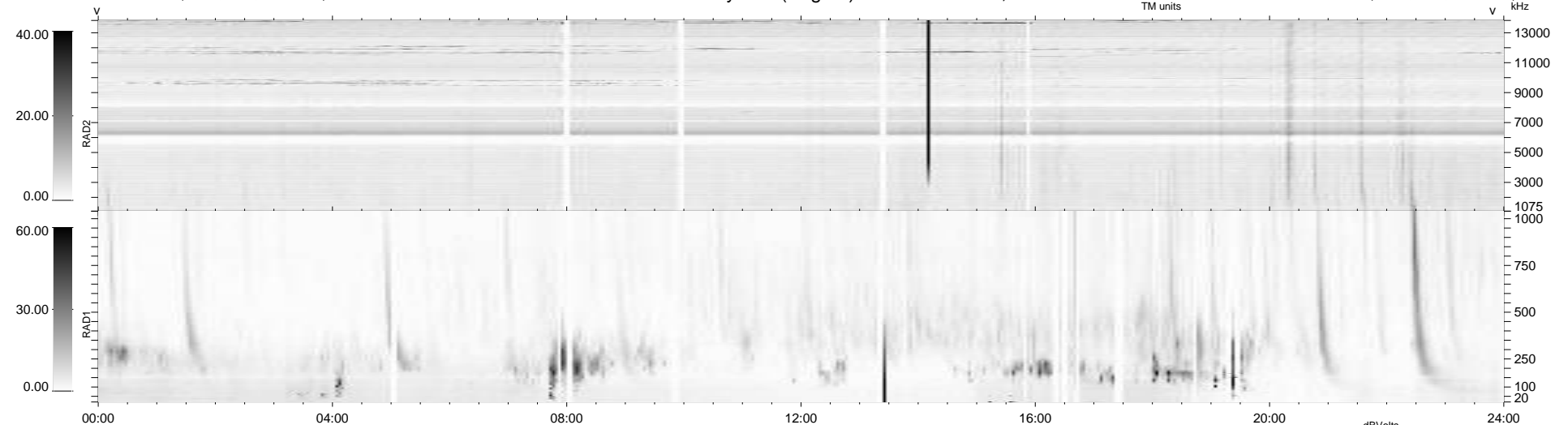
40 bad + 891 good MF/939MF projected (94%) - 8 missing MFs
Avg interval = 180 secs
Re = 202.69 (201.75, 13.02, -14.44 GSE)

windlib 2.0b

LZ version = v01

WIND/WAVES Summary Plot (Page 1) for 06-JUL-2015, DOY = 187

DAILY 2015-07-07 07:52:06
Re = 203.14 (201.94, 16.58, -14.55 GSE)



RAD2
Antenna Ey
Mode LIN(1)
SUM/SEP SEP
Toggle OFF

RAD1
Antenna Ex
Mode LIS(2,4)
SUM/SEP SUM
Toggle OFF

TNR
Antenna ExEy
Mode A-32
Sweep ACE