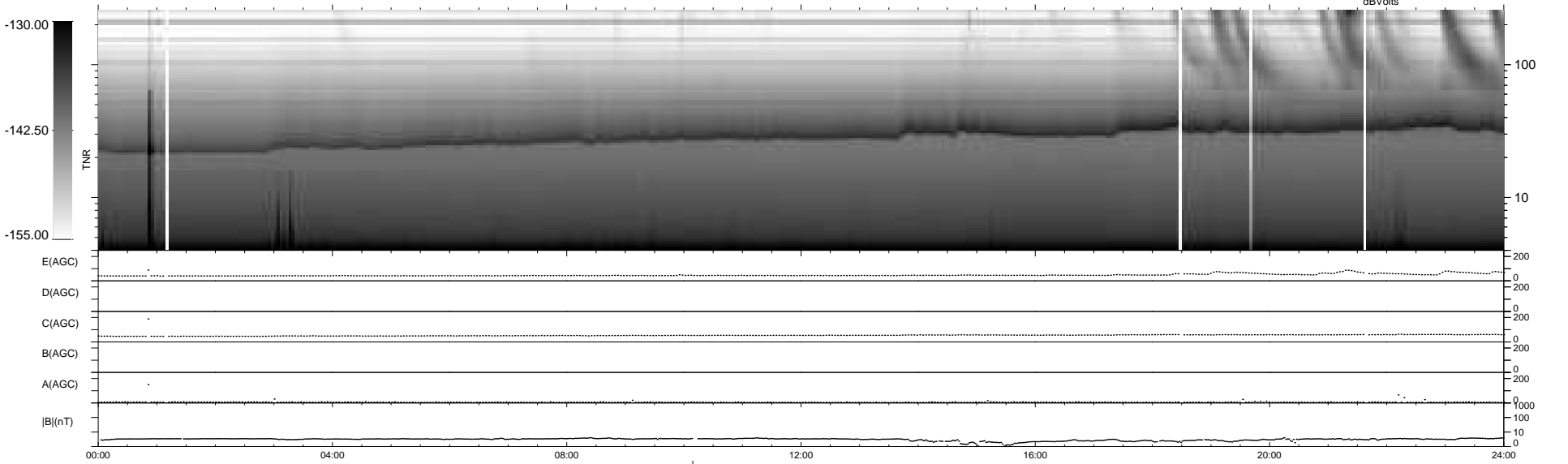
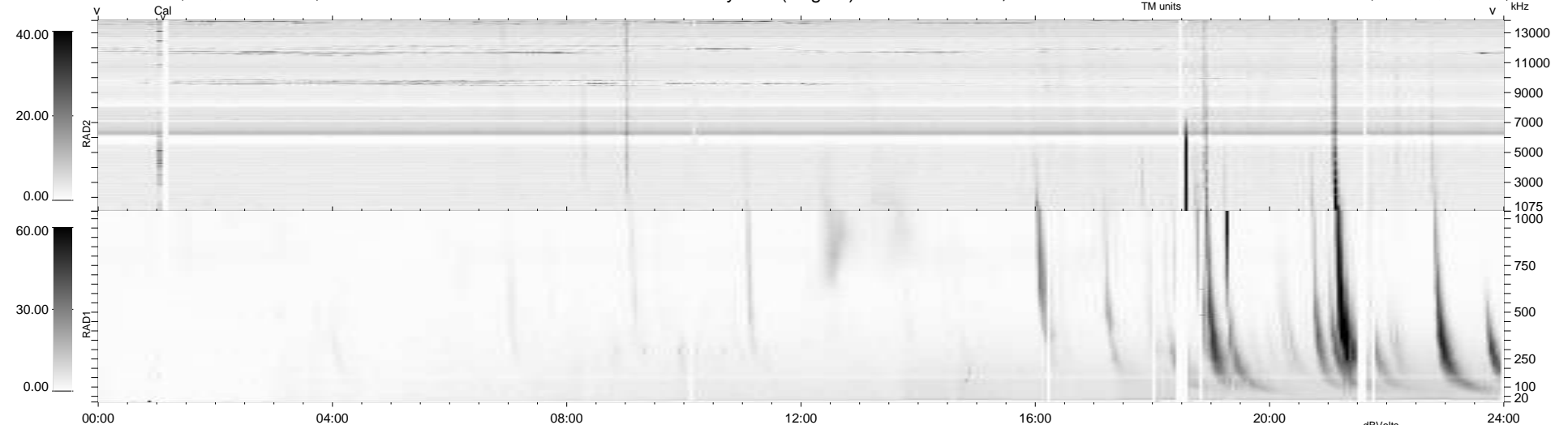


30 bad + 908 good MF/939MF projected (96%) - 1 missing MF
 Avg interval = 180 secs
 Re = 201.92 (201.42, 2.32, -13.97 GSE)

windlib 2.0b LZ version = v01
 DAILY 2015-07-05 02:52:06
 Re = 202.07 (201.49, 5.85, -14.15 GSE)

WIND/WAVES Summary Plot (Page 1) for 03-JUL-2015, DOY = 184



```

RAD2
Antenna Ey .....
Mode LIN(1) .....
SUM/SEP SEP .....
Toggle OFF .....

RAD1
Antenna Ex .....
Mode LIS(2,4) .....
SUM/SEP SUM .....
Toggle OFF .....

TNR
Antenna ExEy .....
Mode A-32 .....
Sweep ACE .....
  
```