

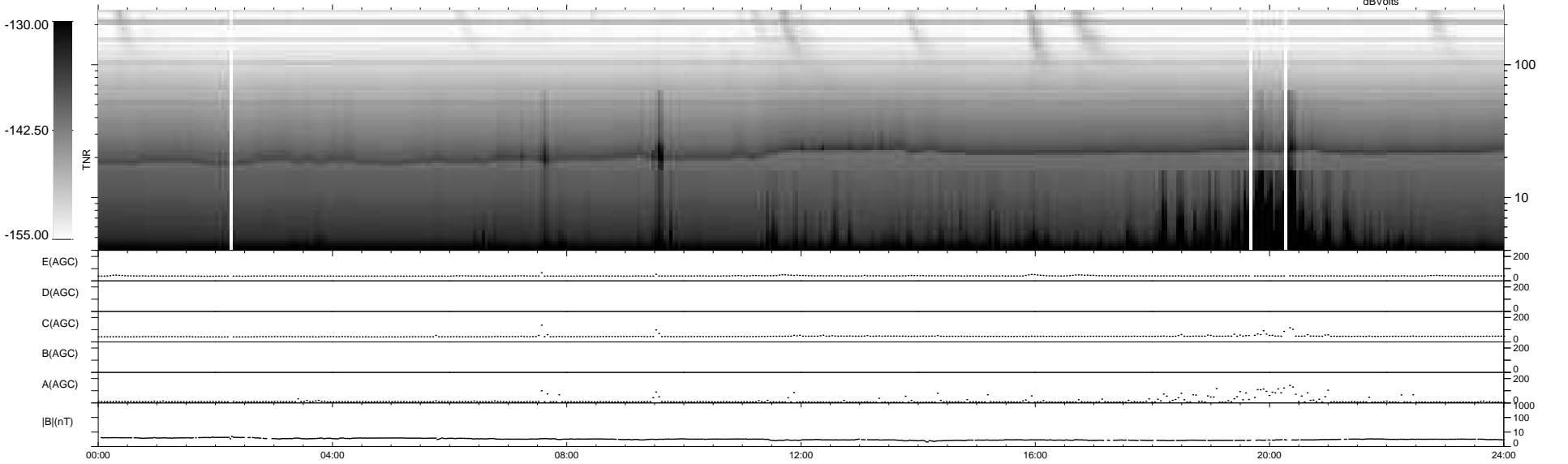
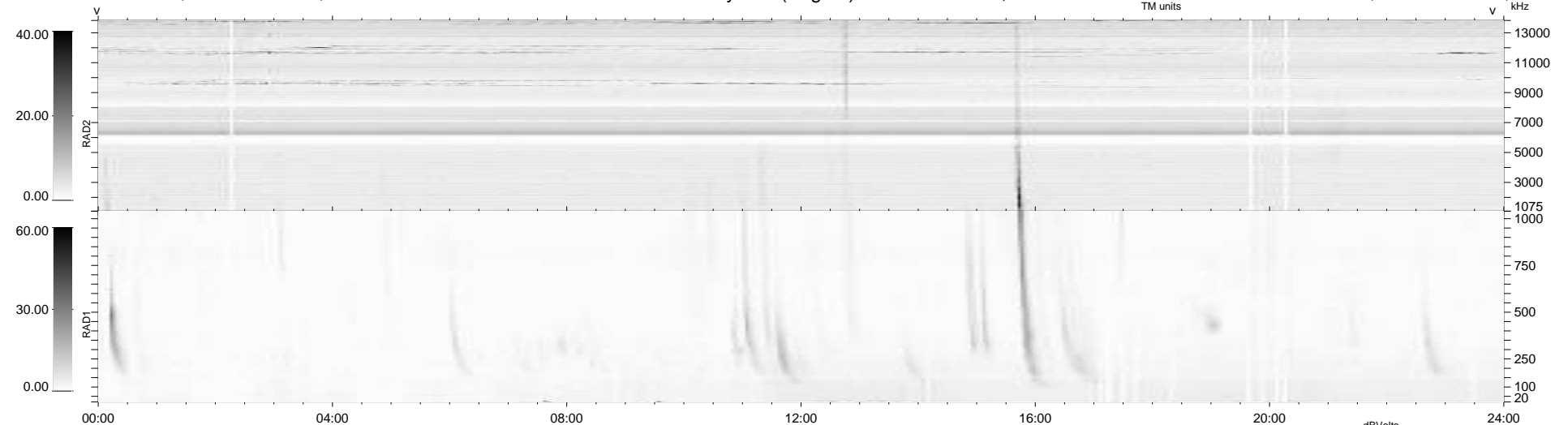
48 bad + 891 good MF/939MF projected (94%) - 0 missing MFs  
 Avg interval = 180 secs  
 Re = -201.88 (201.40, -1.24, -13.77 GSE)

windlib 2.0b

LZ version = v01

### WIND/WAVES Summary Plot (Page 1) for 02-JUL-2015, DOY = 183

DAILY 2015-07-03 08:52:09  
 Re = 201.92 (201.42, 2.29, -13.97 GSE)



```

RAD2
Antenna Ey .....
Mode LIN(1) .....
SUM/SEP SEP .....
Toggle OFF .....

RAD1
Antenna Ex .....
Mode LIS(2,4) .....
SUM/SEP SUM .....
Toggle OFF .....

TNR
Antenna ExEy .....
Mode A-32 .....
Sweep ACE .....
  
```