

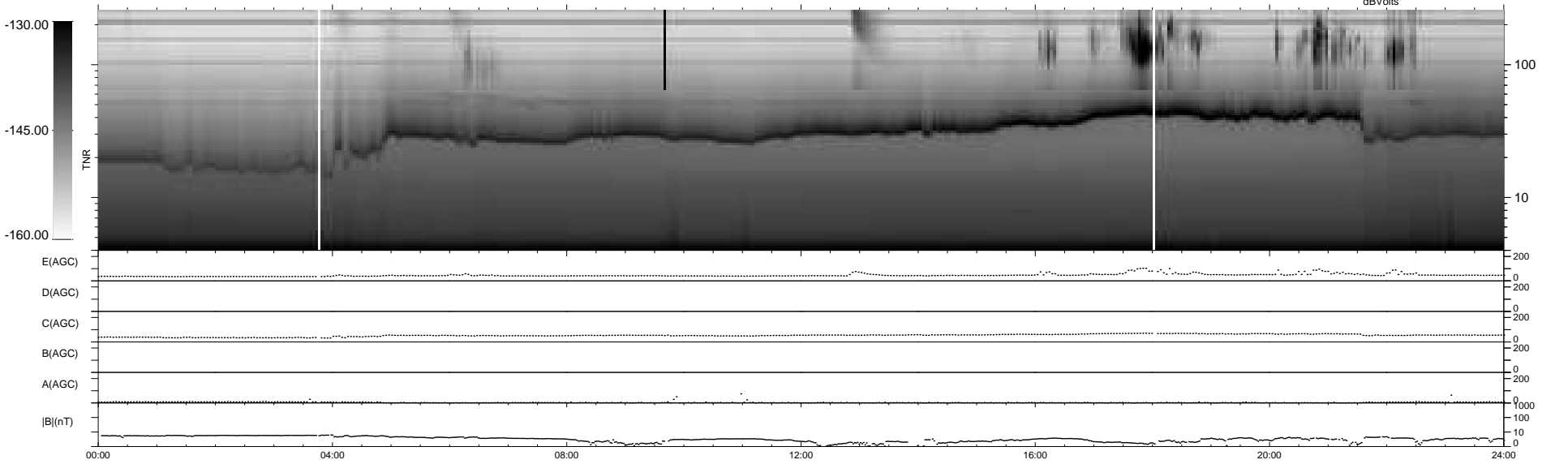
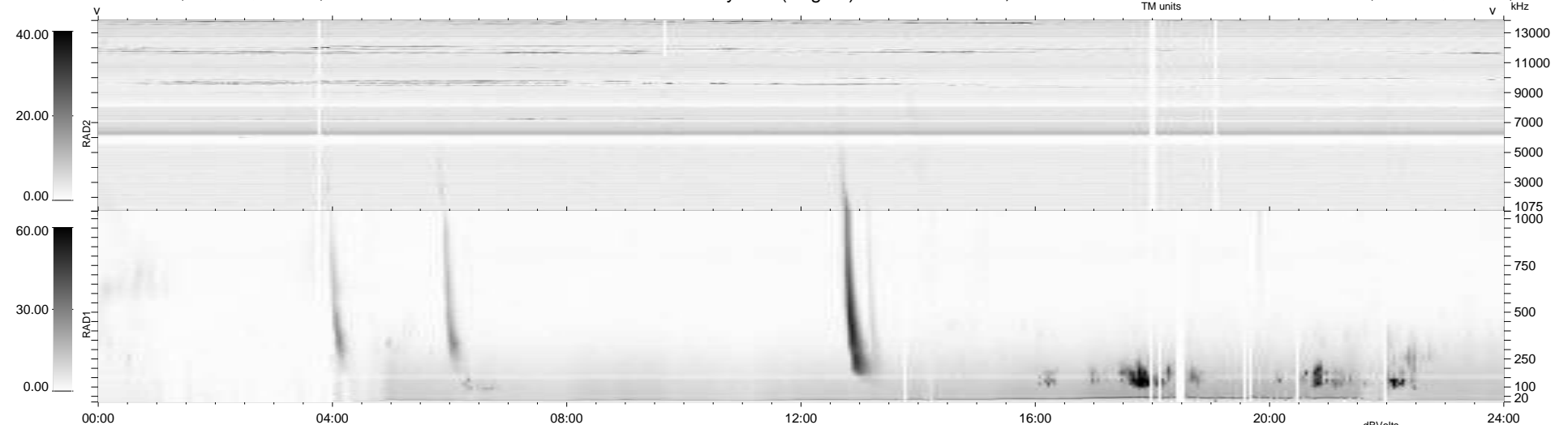
42 bad + 897 good MF/939MF projected (95%) - 0 missing MFs
 Avg interval = 180 secs
 Re = 202.12 (201.51, -8.36, -13.32 GSE)

windlib 2.0b

LZ version = v01

WIND/WAVES Summary Plot (Page 1) for 30-JUN-2015, DOY = 181

DAILY 2015-07-01 13:52:07
 Re = 201.95 (201.44, -4.83, -13.56 GSE)



RAD2
 Antenna Ey
 Mode LIN(1)
 SUM/SEP SEP
 Toggle OFF
 RAD1
 Antenna Ex
 Mode LIS(2,4)
 SUM/SEP SUM
 Toggle OFF
 TNR
 Antenna ExEy
 Mode A-32
 Sweep ACE