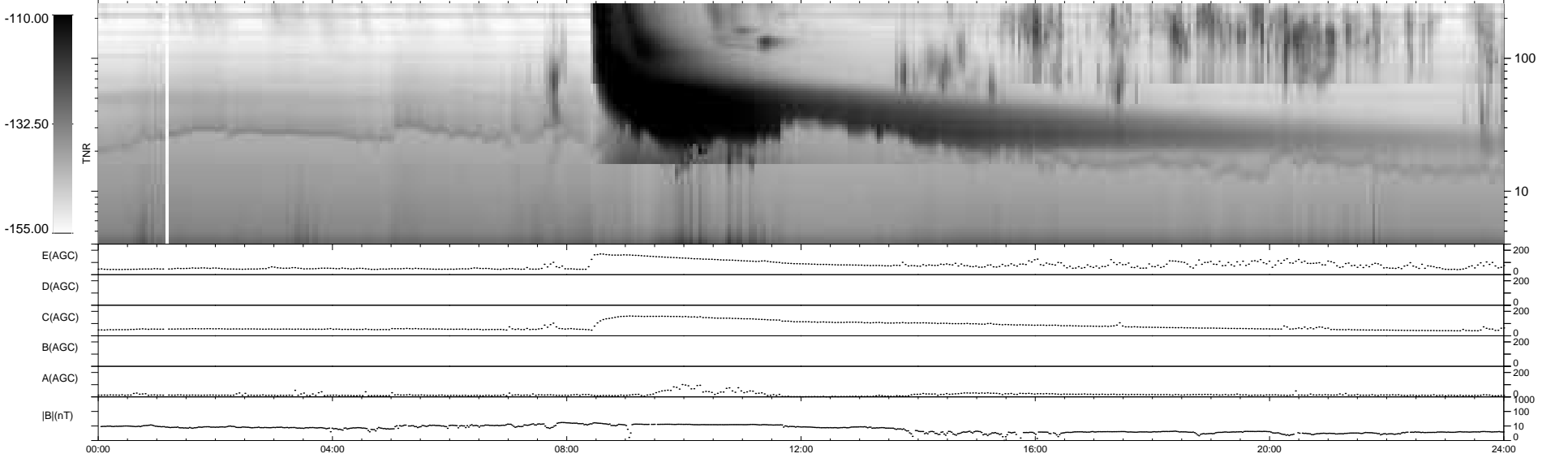
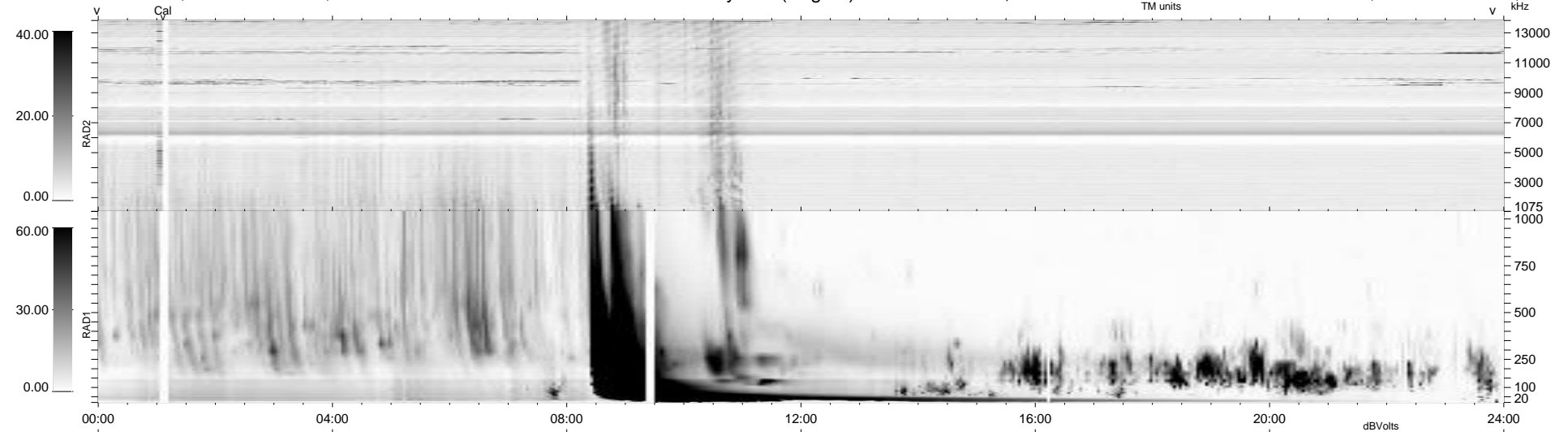


8 bad + 931 good MF/939MF projected (99%) - 0 missing MFs
 Avg interval = 180 secs
 Re = -204.43 (202.41, -26.14, -11.85 GSE)

windlib 2.0b LZ version = v01
 DAILY 2015-06-26 04:52:04
 Re = 203.80 (202.17, -22.61, -12.18 GSE)

WIND/WAVES Summary Plot (Page 1) for 25-JUN-2015, DOY = 176



RAD2
 Antenna Ey
 Mode LIN(1)
 SUM/SEP SEP
 Toggle OFF
 RAD1
 Antenna Ex
 Mode LIS(2,4)
 SUM/SEP SUM
 Toggle OFF
 TNR
 Antenna ExEy
 Mode A-32
 Sweep ACE