

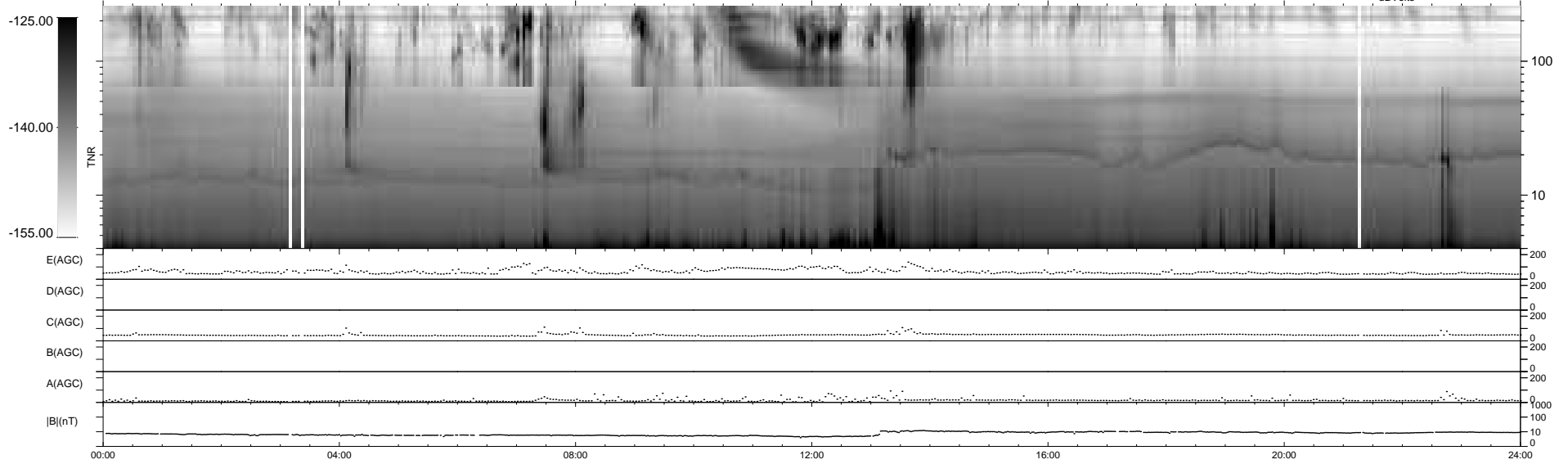
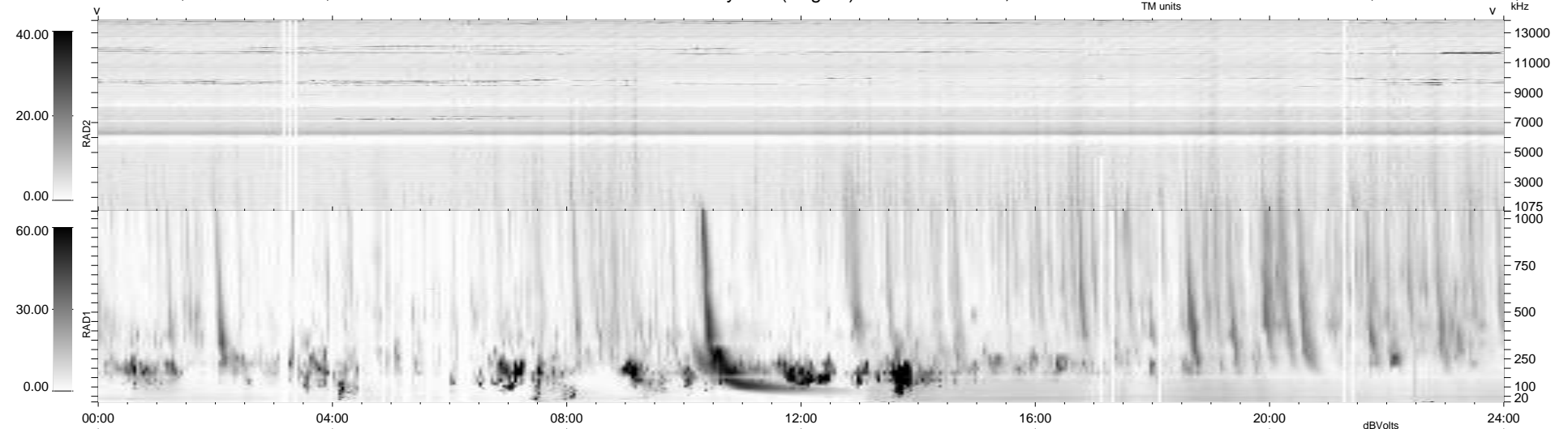
48 bad + 891 good MF/939MF projected (94%) - 0 missing MFs
Avg interval = 180 secs
Re = -205.15 (202.66, -29.68, -11.50 GSE)

windlib 2.0b

LZ version = v01

WIND/WAVES Summary Plot (Page 1) for 24-JUN-2015, DOY = 175

DAILY 2015-06-25 14:52:06
Re = 204.44 (202.41, -26.16, -11.85 GSE)



RAD2
Antenna Ey
Mode LIN(1)
SUM/SEP SEP
Toggle OFF

RAD1
Antenna Ex
Mode LIS(2,4)
SUM/SEP SUM
Toggle OFF

TNR
Antenna ExEy
Mode A-32
Sweep ACE