

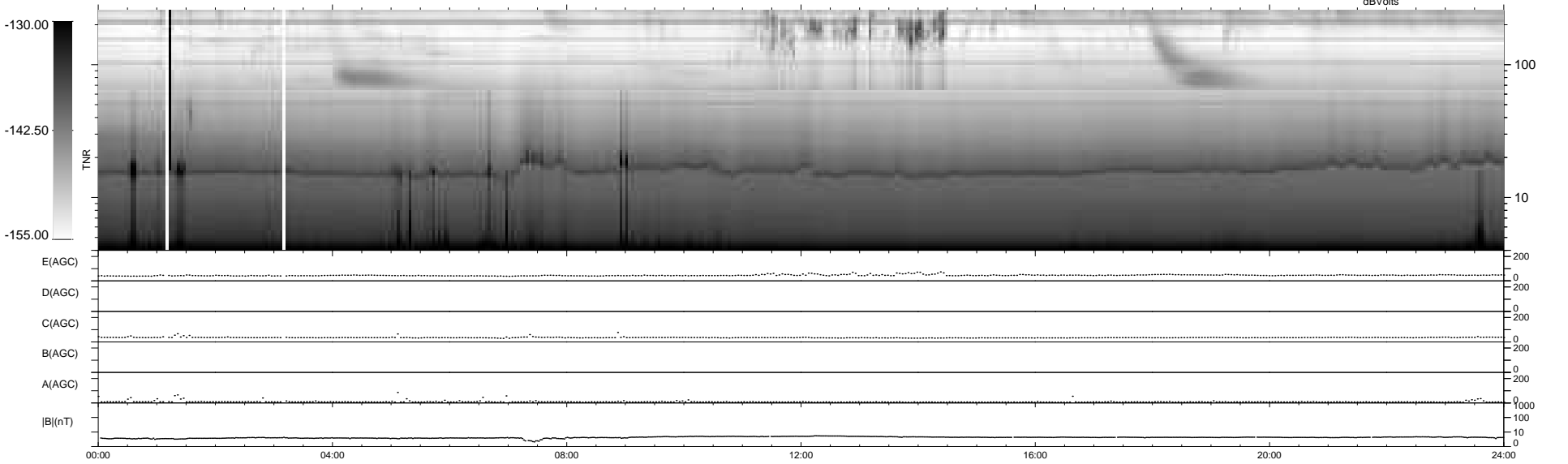
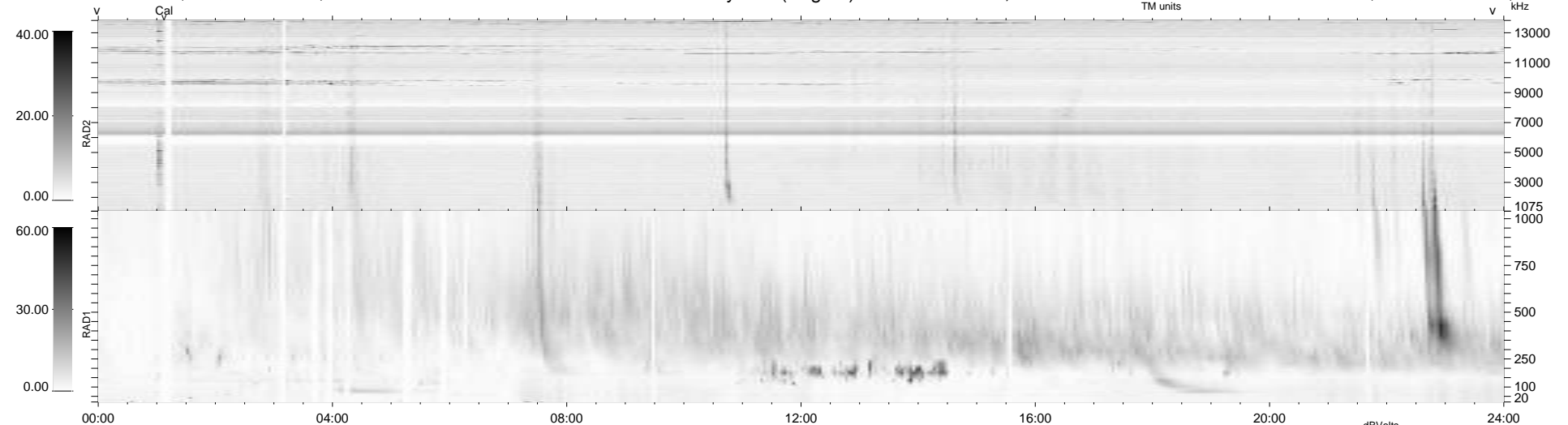
31 bad + 909 good MF/940MF projected (96%) - 0 missing MFs  
 Avg interval = 180 secs  
 Re = 209.64 (204.08, -47.02, -9.46 GSE)

windlib 2.0b

LZ version = v01

### WIND/WAVES Summary Plot (Page 1) for 19-JUN-2015, DOY = 170

DAILY 2015-06-20 05:52:05  
 Re = 208.65 (203.79, -43.65, -9.90 GSE)



```

RAD2
Antenna Ey .....
Mode LIN(1) .....
SUM/SEP SEP .....
Toggle OFF .....

RAD1
Antenna Ex .....
Mode LIS(2,4) .....
SUM/SEP SUM .....
Toggle OFF .....

TNR
Antenna ExEy .....
Mode A-32 .....
Sweep ACE .....
  
```