

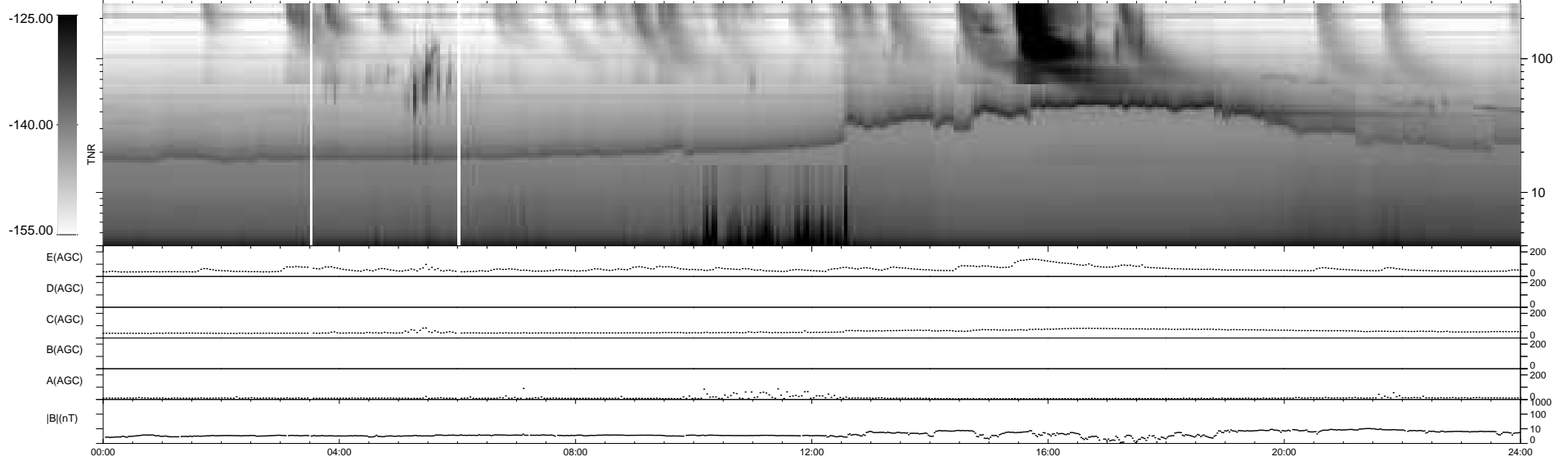
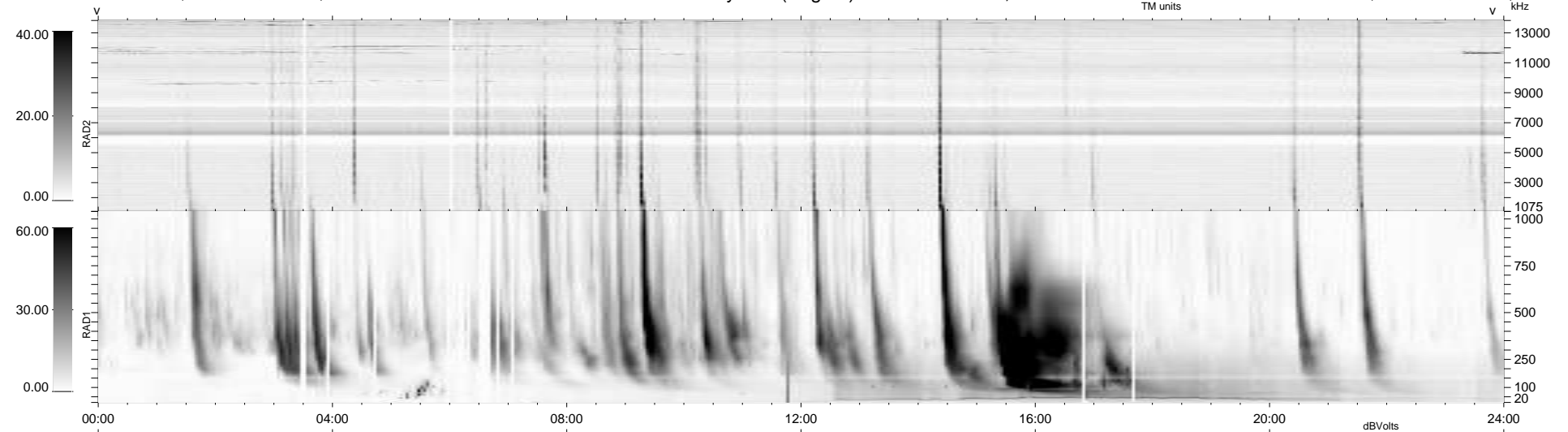
37 bad + 903 good MF/940MF projected (96%) - 0 missing MFs  
 Avg interval = 180 secs  
 Re = -217.12 (205.87, -68.75, -5.89 GSE)

windlib 2.0b

LZ version = v01

### WIND/WAVES Summary Plot (Page 1) for 12-JUN-2015, DOY = 163

DAILY 2015-06-13 17:52:07  
 Re = 216.04 (205.62, -65.96, -6.44 GSE)



```

RAD2
Antenna Ey .....
Mode LIN(1) .....
SUM/SEP SEP .....
Toggle OFF .....

RAD1
Antenna Ex .....
Mode LIS(2,4) .....
SUM/SEP SUM .....
Toggle OFF .....

TNR
Antenna ExEy .....
Mode A-32 .....
Sweep ACE .....
  
```