

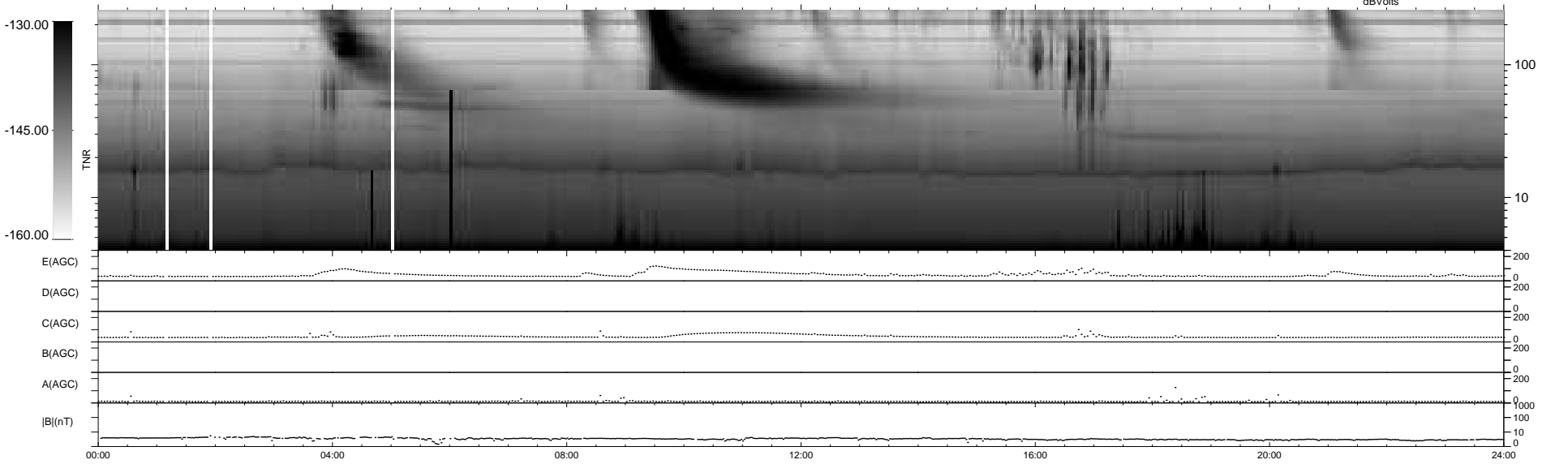
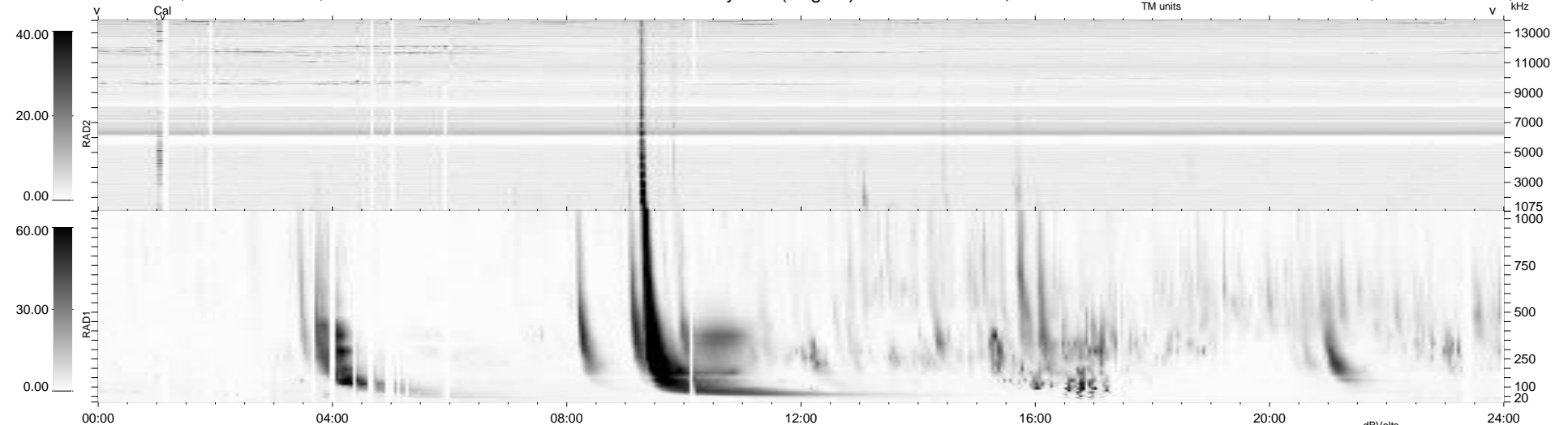
44 bad + 895 good MF/939MF projected (95%) - 0 missing MFs
 Avg interval = 180 secs
 Re = 218.21 (206.12, -71.44, -5.33 GSE)

windlib 2.0b

LZ version = v02

WIND/WAVES Summary Plot (Page 1) for 11-JUN-2015, DOY = 162

DAILY 2015-06-15 10:52:06
 Re = 217.13 (205.87, -68.77, -5.89 GSE)



```

RAD2
Antenna Ey .....
Mode LIN(1) .....
SUM/SEP SEP .....
Toggle OFF .....

RAD1
Antenna Ex .....
Mode LIS(2,4) .....
SUM/SEP SUM .....
Toggle OFF .....

TNR
Antenna ExEy .....
Mode A-32 .....
Sweep ACE .....
  
```