

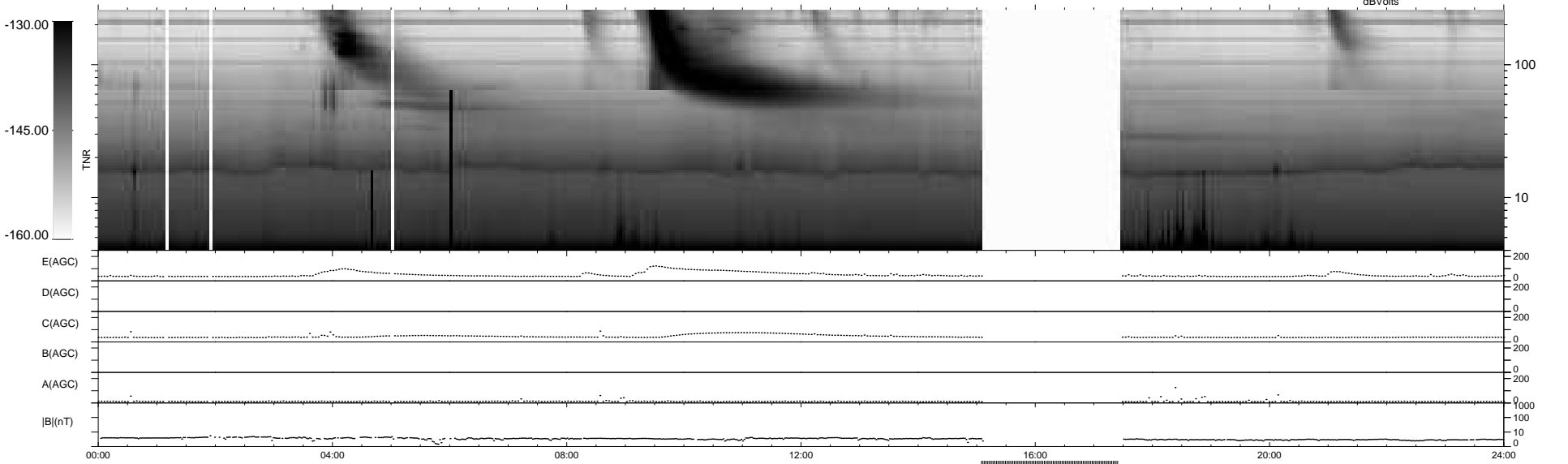
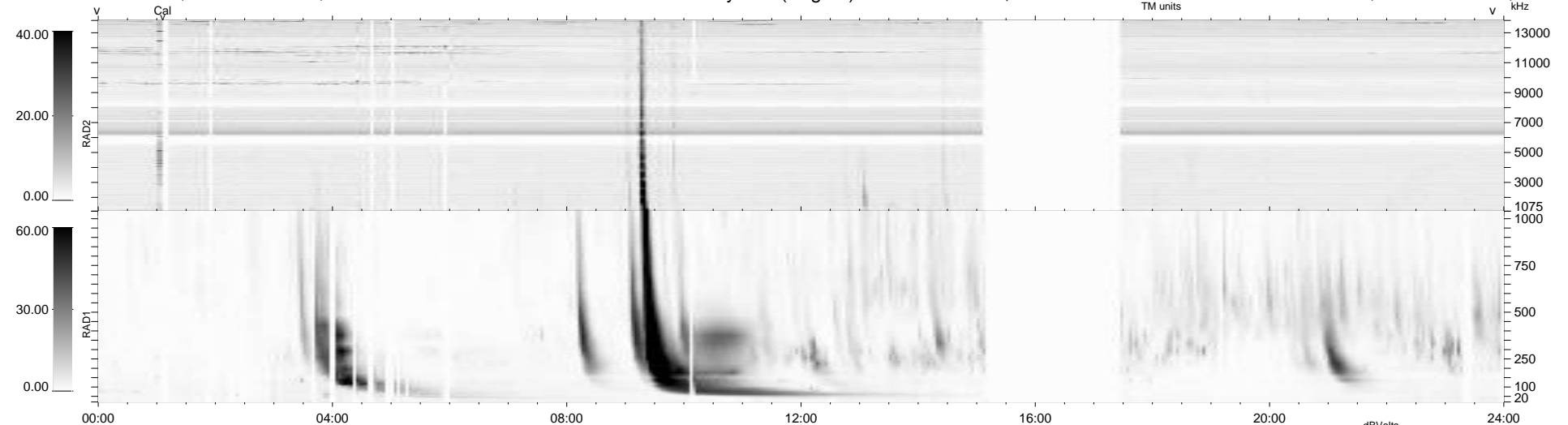
44 bad + 803 good MF/939MF projected (85%) - 92 missing MFs  
Avg interval = 180 secs  
Re = 218.21 (206.12, -71.44, -5.33 GSE)

windlib 2.0b

LZ version = v01

### WIND/WAVES Summary Plot (Page 1) for 11-JUN-2015, DOY = 162

DAILY 2015-06-13 03:52:04  
Re = 217.13 (205.87, -68.77, -5.89 GSE)



RAD2  
Antenna Ey  
Mode LIN(1)  
SUM/SEP SEP  
Toggle OFF

RAD1  
Antenna Ex  
Mode LIS(2,4)  
SUM/SEP SUM  
Toggle OFF

TNR  
Antenna ExEy  
Mode A-32  
Sweep ACE